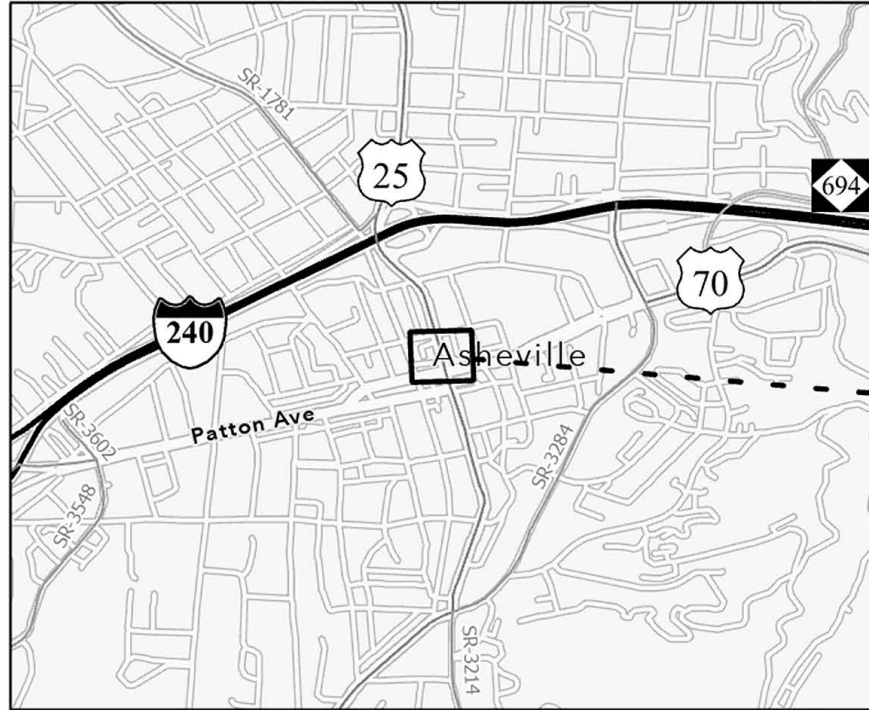
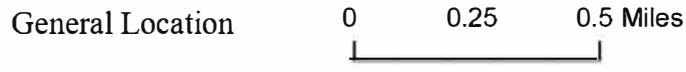


*One or more curb ramps proposed for construction within this sheet may fall within or may be adjacent to nearby NC HPO Historic Districts



Credits: Buncombe County, NC, State of North Carolina DOT, Esri, TomTom, Garmin, SafeGraph, GeoTechnologies, Inc, METL, NASA, USGS, EPA, NPS, US Census Bureau, USDA, USFWS. Current NCGLA Orthomagey for NC in B&W. Intersection coordinates locations provided by NCDOT Division 13 staff. nblharvey@ncdot.gov: 8/9/2024



- ▲ ADA Curb Ramp, Construct (Brick)
- ▲ ADA Curb Ramp, Construct (New)
- ▲ ADA Curb Ramp, Remove
- △ ADA Curb Ramp, Replace Truncated Domes
- △ ADA Curb Ramp, Upgrade

▨ NC HPO Historic Districts

Contract# DM00511
R-5793KB Upgrades/Installation
WBS# 44923.3.23
FA# 4492312
Sheet 1

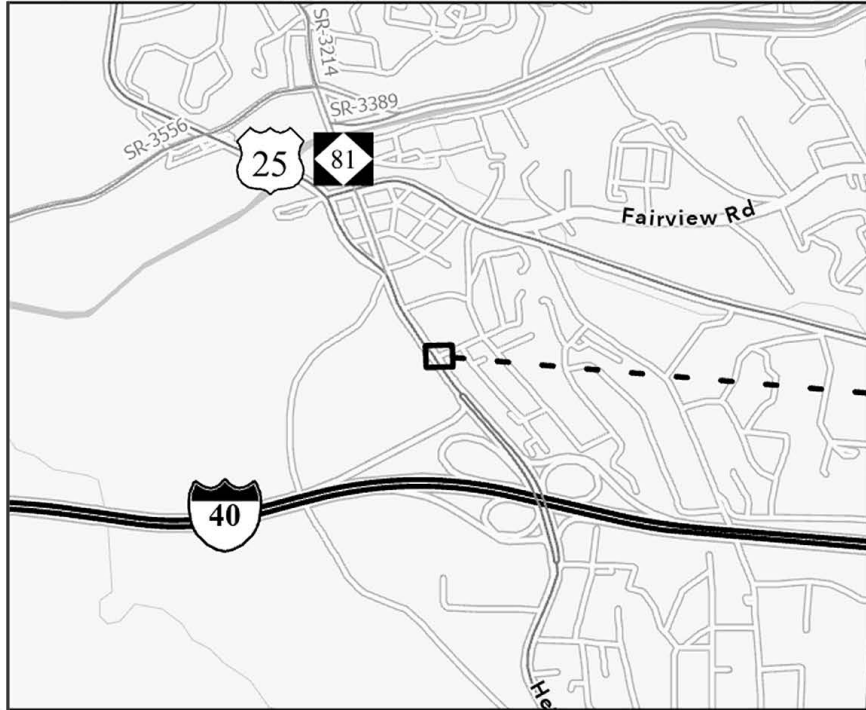


Major Route	Minor Route	Ramp #	Latitude	Longitude
US 25/Broadway St	W Walnut St	9A BS	35.596587	-82.55229
US 25/Broadway St	College St	9C BS	35.595581	-82.552011
US 25/Broadway St	College St	9B BS	35.595471	-82.55181

Division	County	Municipality	Ramp ID	Latitude	Longitude	ASPHALT PLANT MIX, PAVEMENT REPAIR (TONS)	REMOVE AND REPLACE CURB RAMPS (EA)	ADJUSTMENT OF MANHOLES (EA)	CONVERT EXISTING MANHOLE TO JUNCTION BOX W/O MANHOLE (EA)	RELOCATE WATER METER (EA)	RELOCATE VALVE (EA)	SIGNAL CABLE (LF)	UNPAVED TRENCHING (1, 2") (LF)	JUNCTION BOX STANDARD SIZE (EA)	LEAD-IN CABLE (14-2) (LF)	NOTES
13	Buncombe	Asheville	9A BS	35.596587	-82.55229		1		1							
			9C BS	35.595581	-82.552011	2	1	1			75	20	2	40		
			9B BS	35.595471	-82.55181		1			1	1	45	10	1	20	
						2	3	1	1	1	120	30	3	60		

*The above space is reserved for project quantities.

*One or more curb ramps proposed for construction within this sheet may fall within or may be adjacent to nearby NC HPO Historic Districts



Credits: Buncombe County, NC, State of North Carolina DOT, Esri, TomTom, Garmin, SafeGraph, GeoTechnologies, Inc, METI, NASA, USGS, EPA, NPS, US Census Bureau, USDA, USFWS. Current NCCGLA Orthomagey for NC in B&W. Intersection coordinates locations provided by NCDOT Division 13 staff nblarvey@ncdot.gov 8/9/2024

General Location 0 0.25 0.5 Miles



- ▲ ADA Curb Ramp, Construct (Brick)
- ▲ ADA Curb Ramp, Construct (New)
- ▲ ADA Curb Ramp, Remove
- △ ADA Curb Ramp, Replace Truncated Domes
- △ ADA Curb Ramp, Upgrade

▨ NC HPO Historic Districts

Contract# DM00511
R-5793KB Upgrades/Installation
WBS# 44923.3.23
FA# 4492312
Sheet 2



Major Route	Minor Route	Ramp #	Latitude	Longitude
US-25 (Hendersonville Rd)	Irwin Street (Private)	F001A	35.562652	-82.541454
US-25 (Hendersonville Rd)	Irwin Street (Private)	F001B	35.562501	-82.541353

Division	County	Municipality	Ramp ID	Latitude	Longitude	ASPHALT PLANT MIX, PAVEMENT REPAIR (TONS)	REMOVE AND REPLACE CURB RAMPS (EA)	REMOVE AND REPLACE 4" CONCRETE SIDEWALK (SY)	REMOVE AND REPLACE 2'-6" CURB & GUTTER (LF)	ADJUSTMENT OF METER BOXES OR VALVE BOXES (EA)	NOTES
13	Buncombe	Asheville	F001A	35.56265245	-82.5413525	1	1	6	5	1	
			F001B	35.5625007	-82.5413525		1	3	5		
						1	2	9	10	1	

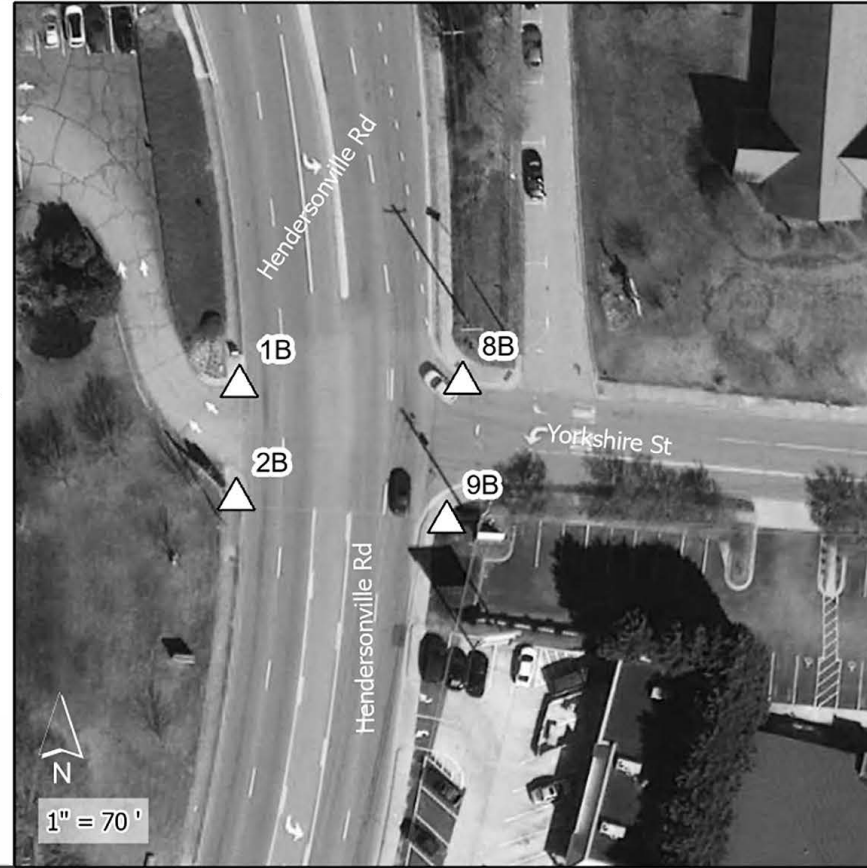
*The above space is reserved for project quantities.

*One or more curb ramps proposed for construction within this sheet may fall within or may be adjacent to nearby NC HPO Historic Districts



Credits: Buncombe County, NC, State of North Carolina DOT, Esri, TomTom, Garmin, SafeGraph, GeoTechnologies, Inc, METI, NASA, USGS, EPA, NPS, US Census Bureau, USDA, USFWS. Current NCCGLA Orthomagey for NC in B&W. Intersection coordinates locations provided by NCDOT Division 13 staff. nblharvey@ncdot.gov 8/9/2024

General Location 0 0.25 0.5 Miles



1" = 70'

- ▲ ADA Curb Ramp, Construct (Brick)
- ▲ ADA Curb Ramp, Construct (New)
- ▲ ADA Curb Ramp, Remove
- △ ADA Curb Ramp, Replace Truncated Domes
- △ ADA Curb Ramp, Upgrade

▨ NC HPO Historic Districts

Contract# DM00511
R-5793KB Upgrades/Installation
WBS# 44923.3.23
FA# 4492312
Sheet 3



Major Route	Minor Route	Ramp #	Latitude	Longitude
US-25 (Hendersonville Rd)	Yorkshire St	8B	35.556792	-82.537919
US-25 (Hendersonville Rd)	375 Hendersonville Rd	1B	35.556781	-82.538193
US-25 (Hendersonville Rd)	375 Hendersonville Rd	2B	35.556668	-82.538192
US-25 (Hendersonville Rd)	Yorkshire St	9B	35.556653	-82.537933

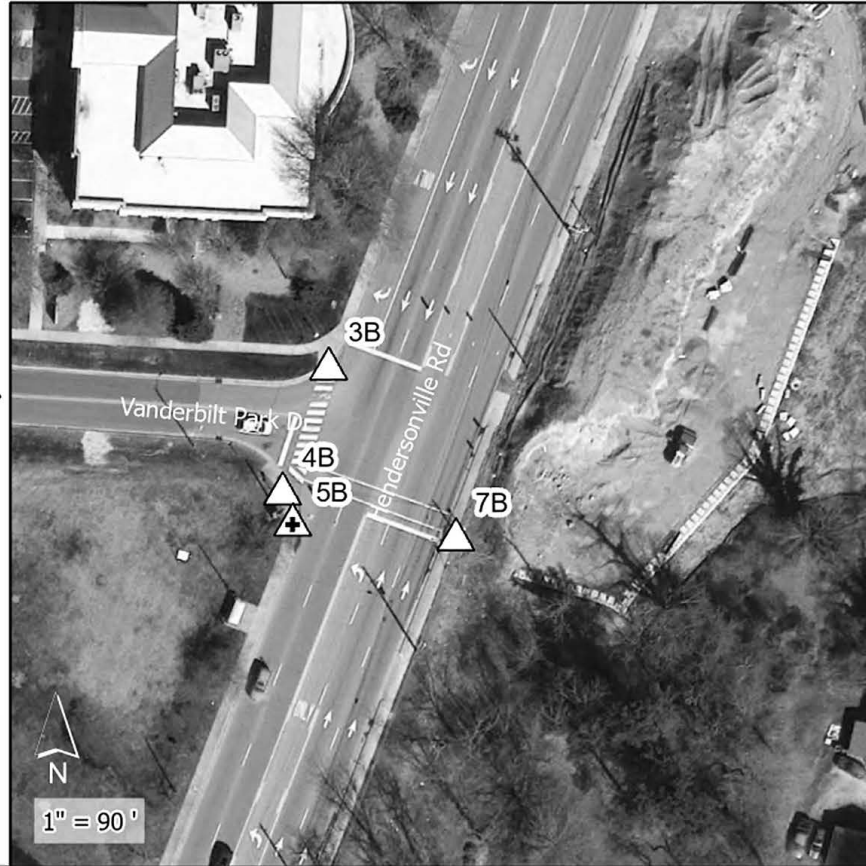
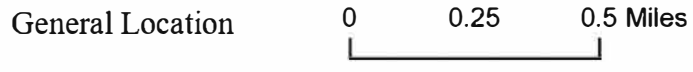
Division	County	Municipality	Ramp ID	Latitude	Longitude	ASPHALT PLANT MIX, PAVEMENT REPAIR (TONS)	4" CONCRETE SIDEWALK (SY)	REMOVE AND REPLACE CURB RAMPS (EA)	REMOVE AND REPLACE 4" CONCRETE SIDEWALK (SY)	REMOVE AND REPLACE 2'-6" CURB & GUTTER (LF)	NOTES
13	Buncombe	Asheville	1B	35.55678095	-82.53819258	2		1	7	24	
			2B	35.55666799	-82.53819152		1	14	14		
			8B	35.55679209	-82.53791946		5	1			
			9B	35.55665264	-82.53793296		1				
						2	5	4	21	38	

*The above space is reserved for project quantities.

*One or more curb ramps proposed for construction within this sheet may fall within or may be adjacent to nearby NC HPO Historic Districts



Credits: Buncombe County, NC, State of North Carolina DOT, Esri, TomTom, Garmin, SafeGraph, GeoTechnologies, Inc, METI, NASA, USGS, EPA, NPS, US Census Bureau, USDA, USFWS. Current NCCGLA Orthomagey for NC in B&W. Intersection coordinates locations provided by NCDOT Division 13 staff nblarvey@ncdot.gov 8/9/2024



- ADA Curb Ramp, Construct (Brick)
- ADA Curb Ramp, Construct (New)
- ADA Curb Ramp, Remove
- ADA Curb Ramp, Replace Truncated Domes
- ADA Curb Ramp, Upgrade

NC HPO Historic Districts

Contract# DM00511
R-5793KB Upgrades/Installation
WBS# 44923.3.23
FA# 4492312
Sheet 4



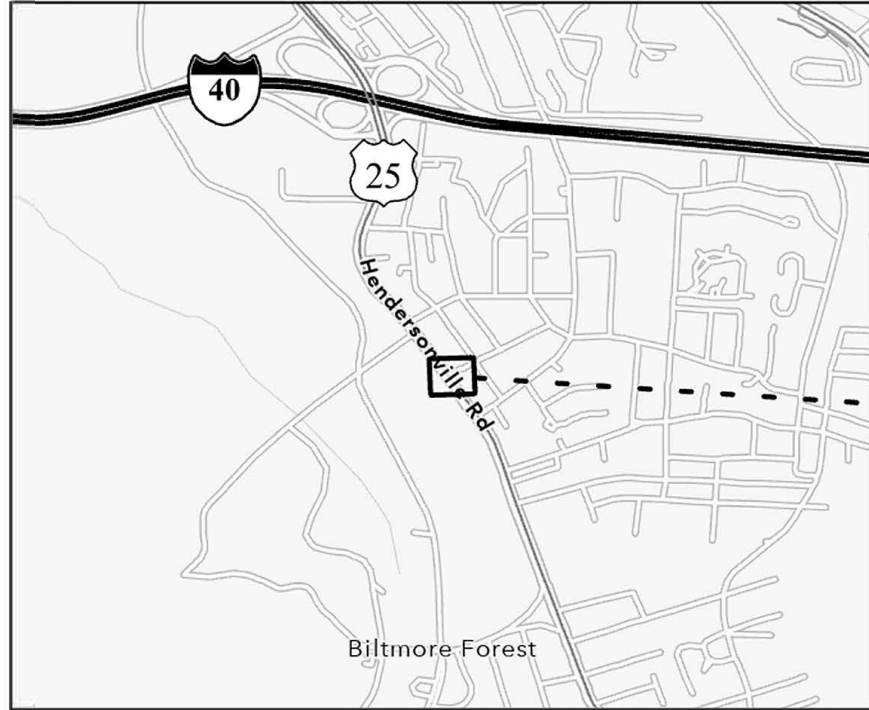
Major Route	Minor Route	Ramp #	Latitude	Longitude
US-25 (Hendersonville Rd)	Vanderbilt Park Dr	3B	35.555501	-82.538578
US-25 (Hendersonville Rd)	Vanderbilt Park Dr	4B	35.555338	-82.538644
US-25 (Hendersonville Rd)	Vanderbilt Park Dr	5B	35.555298	-82.538626
US-25 (Hendersonville Rd)	Vanderbilt Park Dr	7B	35.555287	-82.538368

Division	County	Municipality	Ramp ID	Latitude	Longitude	ASPHALT PLANT MIX, PAVEMENT REPAIR (TONS)	4" CONCRETE SIDEWALK (SY)	CONCRETE CURB RAMPS (EA)	REMOVE AND REPLACE CURB RAMPS (EA)	REMOVE AND REPLACE 4" CONCRETE SIDEWALK (SY)	REMOVE CONCRETE CURB RAMPS (EA)	THERMOPLASTIC PAVEMENT MARKING LINES (24", 90 MILS) (LF)	REMOVAL OF PAVEMENT MARKING LINES (4") (LF)	REMOVAL OF PAVEMENT MARKING LINES (8") (LF)	REMOVAL OF PAVEMENT MARKING LINES (24") (LF)	PEDESTRIAN SIGNAL HEAD (16", 1 SECTION W/COUNTDOWN) (EA)	SIGNAL CABLE (LF)	LEAD-IN CABLE (14-2) (LF)	TYPE II PEDESTAL WITH FOUNDATION (EA)	PEDESTRIAN SIGNAL REMOVAL (EA)	NOTES		
13	Buncombe	Asheville	3B	35.55550075	-82.53857818	1			1	5													
			4B	35.55533794	-82.53864367				1														
			5B	35.55529846	-82.53862606			1		5					1	250	250	1					
			7B	35.55528704	-82.53836832			15	1		1	108	30	140	35	1	250	250	1	1	INSTALL HI-VISIBILITY CROSSWALK ACROSS US-25		
						1	15	2	2	10	108	30	140	35	2	500	500	2					

*COORDINATE WITH NCDOT DIVISION 13 TRAFFIC SERVICES BEFORE BEGINNING CONSTRUCTION AT THIS INTERSECTION

*The above space is reserved for project quantities.

*One or more curb ramps proposed for construction within this sheet may fall within or may be adjacent to nearby NC HPO Historic Districts



Credits: Buncombe County, NC, State of North Carolina DOT, Esri, TomTom, Garmin, SafeGraph, GeoTechnologies, Inc, METI, NASA, USGS, EPA, NPS, US Census Bureau, USDA, USFWS. Current NCCGLA Orthomagey for NC in B&W. Intersection coordinates locations provided by NCDOT Division 13 staff nblarvey@ncdot.gov 8/9/2024

General Location 0 0.25 0.5 Miles



- ADA Curb Ramp, Construct (Brick)
- ADA Curb Ramp, Construct (New)
- ADA Curb Ramp, Remove
- ADA Curb Ramp, Replace Truncated Domes
- ADA Curb Ramp, Upgrade

NC HPO Historic Districts

Contract# DM00511
R-5793KB Upgrades/Installation
WBS# 44923.3.23
FA# 4492312
Sheet 5



Major Route	Minor Route	Ramp #	Latitude	Longitude
US-25 (Hendersonville Rd)	Fairview St (Pvt)	37B	35.550152	-82.536131
US-25 (Hendersonville Rd)	Fairview St (Pvt)	38B	35.550034	-82.536062

Division	County	Municipality	Ramp ID	Latitude	Longitude	ASPHALT PLANT MIX, PAVEMENT REPAIR (TONS)	REMOVE AND REPLACE CURB RAMPS (EA)	REMOVE AND REPLACE 4" CONCRETE SIDEWALK (SY)	REMOVE AND REPLACE 2'-6" CURB & GUTTER (LF)	NOTES
13	Buncombe	Asheville	37B	35.55015183	-82.53613128	1	1	6	12	
			38B	35.55003394	-82.5360615		1	6	10	
						1	2	12	22	

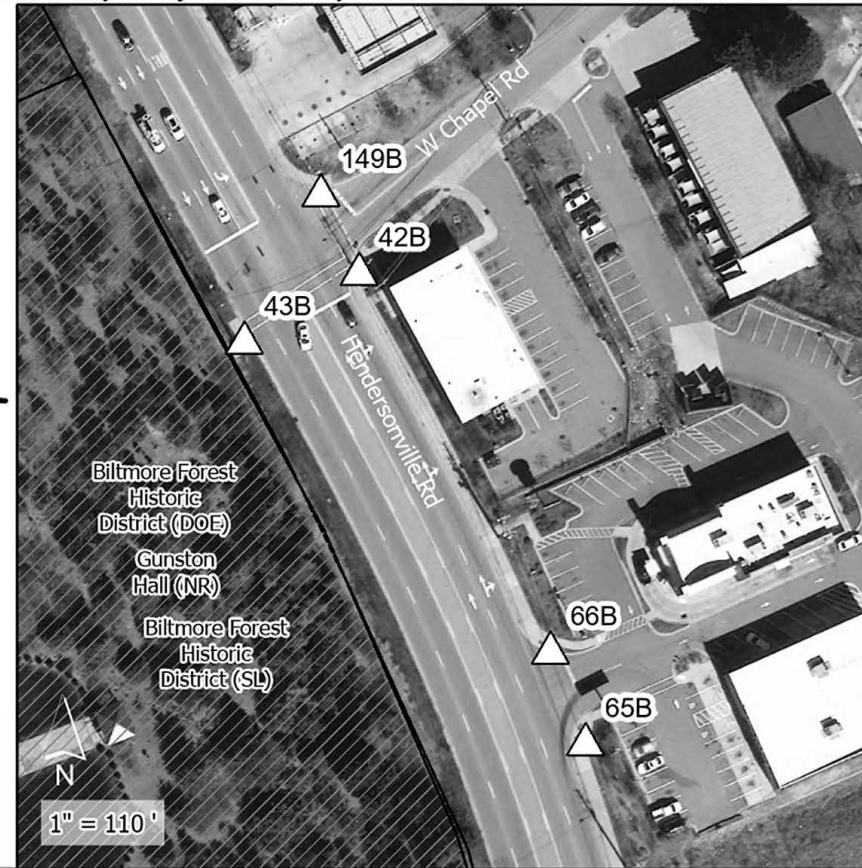
*The above space is reserved for project quantities.

*One or more curb ramps proposed for construction within this sheet may fall within or may be adjacent to nearby NC HPO Historic Districts



Credits: Buncombe County, NC, State of North Carolina DOT, Esri, TomTom, Garmin, SafeGraph, GeoTechnologies, Inc, METI, NASA, USGS, EPA, NPS, US Census Bureau, USDA, USFWS. Current NCCGLA Orthomagey for NC in B&W. Intersection coordinates locations provided by NCDOT Division 13 staff. nblharvey@ncdot.gov 8/9/2024

General Location 0 0.25 0.5 Miles



- ADA Curb Ramp, Construct (Brick)
- ADA Curb Ramp, Construct (New)
- ADA Curb Ramp, Remove
- ADA Curb Ramp, Replace Truncated Domes
- ADA Curb Ramp, Upgrade

NC HPO Historic Districts

Contract# DM00511
R-5793KB Upgrades/Installation
WBS# 44923.3.23
FA# 4492312
Sheet 6

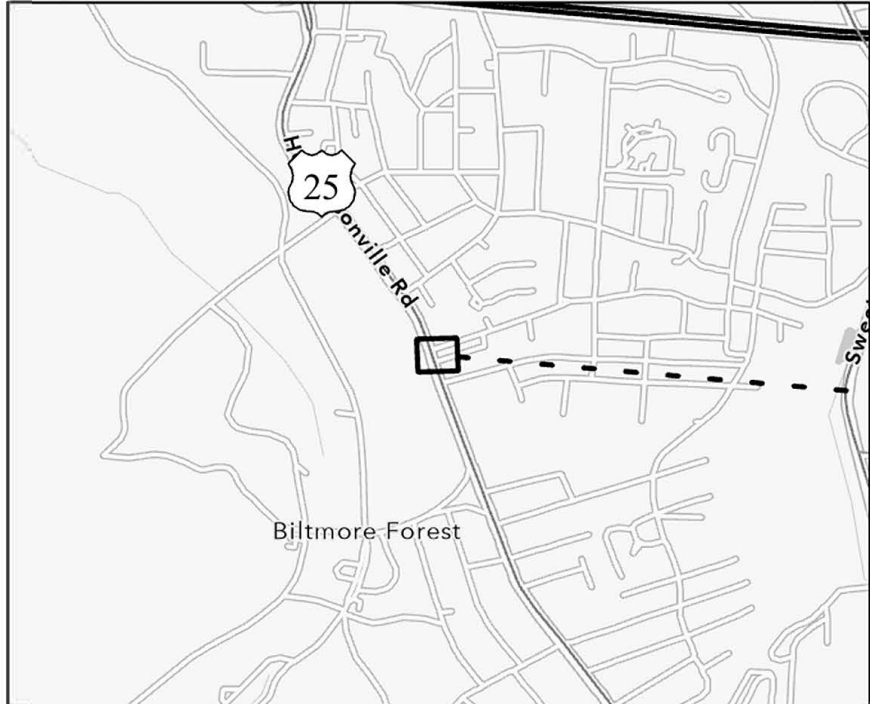


Major Route	Minor Route	Ramp #	Latitude	Longitude
US-25 (Hendersonville Rd)	W Chapel Rd (Pvt)	149B	35.54893	-82.535226
US-25 (Hendersonville Rd)	W Chapel Rd (ABC Store)	42B	35.548808	-82.535147
US-25 (Hendersonville Rd)	W Chapel Rd	43B	35.548694	-82.535364
US-25 (Hendersonville Rd)	654 Hendersonville Rd (Bojangles)	66B	35.548224	-82.534754
US-25 (Hendersonville Rd)	658 Hendersonville Rd (UPS)	65B	35.548082	-82.53468

Division	County	Municipality	Ramp ID	Latitude	Longitude	ASPHALT PLANT MIX, PAVEMENT REPAIR (TONS)	2'-6" CONCRETE CURB & GUTTER (LF)	4" CONCRETE SIDEWALK (SY)	REMOVE AND REPLACE CURB RAMPS (EA)	THERMOPLASTIC PAVEMENT MARKING LINES (24", 90 MILS) (LF)	REMOVAL OF PAVEMENT MARKING LINES (8") (LF)	NOTES
13	Buncombe	Asheville	42B	35.54880839	-82.53514749	2			1	66	45	INSTALL HI-VISIBILITY CROSSWALK BETWEEN 42B AND 149B
			43B	35.5486938	-82.5353635		1	108	138	INSTALL HI-VISIBILITY CROSSWALK BETWEEN 42B AND 43B		
			65B	35.54808166	-82.53467995							
			66B	35.54822374	-82.53475355		10	5	1			
			149B	35.54892981	-82.53522649				1			
						2	10	5	5	174	183	

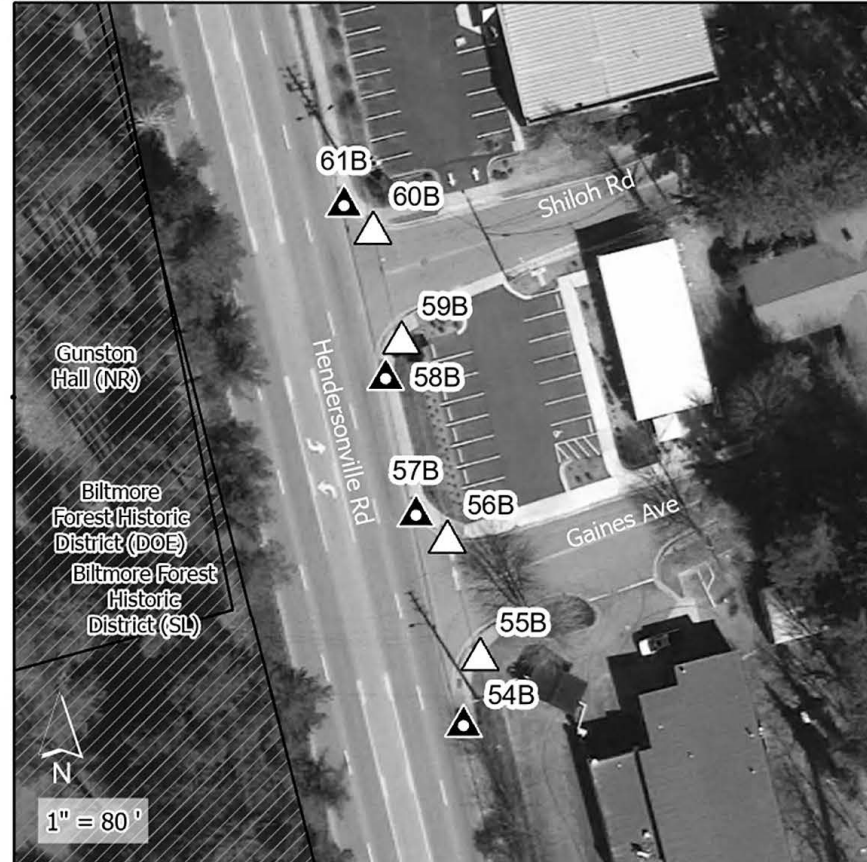
*The above space is reserved for project quantities.

*One or more curb ramps proposed for construction within this sheet may fall within or may be adjacent to nearby NC HPO Historic Districts



Credits: Buncombe County, NC, State of North Carolina DOT, Esri, TomTom, Garmin, SafeGraph, GeoTechnologies, Inc, METI, NASA, USGS, EPA, NPS, US Census Bureau, USDA, USFWS. Current NCCGLA Orthomagey for NC in B&W. Intersection coordinates locations provided by NCDOT Division 13 staff nblarvey@ncdot.gov 8/9/2024

General Location 0 0.25 0.5 Miles



1" = 80'

- ▲ ADA Curb Ramp, Construct (Brick)
- ▲ ADA Curb Ramp, Construct (New)
- ▲ ADA Curb Ramp, Remove
- ▲ ADA Curb Ramp, Replace Truncated Domes
- ▲ ADA Curb Ramp, Upgrade

▨ NC HPO Historic Districts

Contract# DM00511
R-5793KB Upgrades/Installation
WBS# 44923.3.23
FA# 4492312
Sheet 7

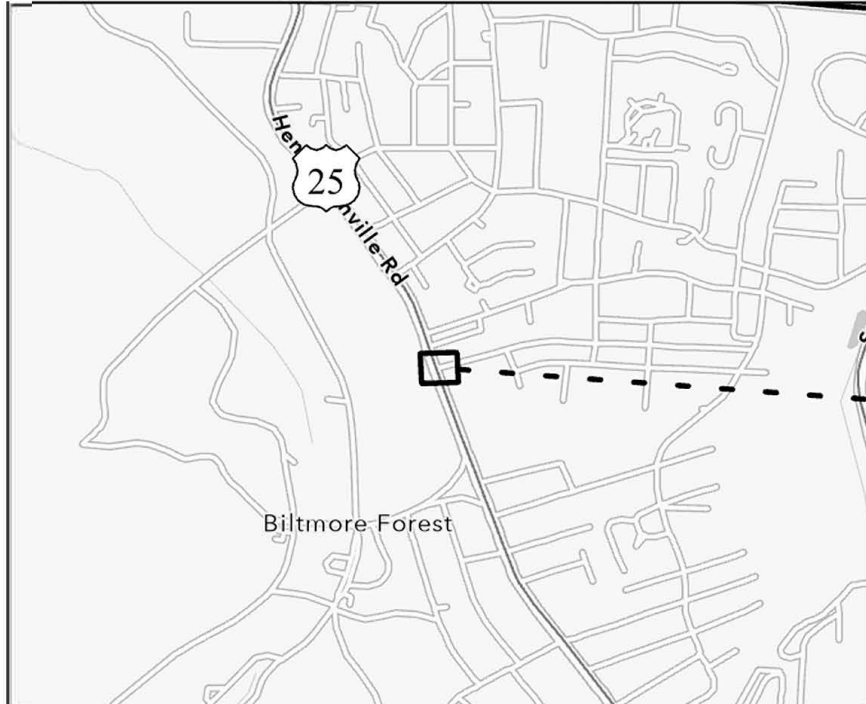


Major Route	Minor Route	Ramp #	Latitude	Longitude
US-25 (Hendersonville Rd)	Shiloh Rd (Pvt)	61B	35.547257	-82.534391
US-25 (Hendersonville Rd)	Shiloh Rd (Pvt)	60B	35.547227	-82.534349
US-25 (Hendersonville Rd)	Shiloh Rd (Pvt)	59B	35.547103	-82.534303
US-25 (Hendersonville Rd)	Shiloh Rd (Pvt)	58B	35.547061	-82.534324
US-25 (Hendersonville Rd)	Gaines Ave (Pvt)	57B	35.546906	-82.534274
US-25 (Hendersonville Rd)	Gaines Ave (Pvt)	56B	35.546877	-82.534229
US-25 (Hendersonville Rd)	Gaines Ave (Jiffy Lube)	55B	35.546744	-82.534178
US-25 (Hendersonville Rd)	Gaines Ave (Jiffy Lube)	54B	35.546667	-82.534198

Division	County	Municipality	Ramp ID	Latitude	Longitude	ASPHALT PLANT MIX, PAVEMENT REPAIR (TONS)	2'-6" CONCRETE CURB & GUTTER (LF)	4" CONCRETE SIDEWALK (SY)	REMOVE AND REPLACE CURB RAMPS (EA)	REMOVE CONCRETE CURB RAMPS (EA)	ADJUSTMENT OF METER BOXES OR VALVE BOXES (EA)	RELOCATE FIRE HYDRANT (EA)	FIRE HYDRANT LEG (LF)	NOTES
13	Buncombe	Asheville	54B	35.54666741	-82.53419763	2	20	12		1				
			55B	35.54674442	-82.53417764			1						
			56B	35.54687723	-82.53422937		10	5	1					
			57B	35.54690603	-82.53427449		17	10		1				
			58B	35.547061	-82.53432372		18	12		1				
			59B	35.54710303	-82.53430324				1	2	1	10		
			60B	35.54722743	-82.53434862		10	5	1					
			61B	35.54725711	-82.53439061		19	13		1				
					2	94	57	4	4	2	1	10		

The above space is reserved for project quantities.

*One or more curb ramps proposed for construction within this sheet may fall within or may be adjacent to nearby NC HPO Historic Districts



Credits: Buncombe County, NC, State of North Carolina DOT, Esri, TomTom, Garmin, SafeGraph, GeoTechnologies, Inc, METL, NASA, USGS, EPA, NPS, US Census Bureau, USDA, USFWS. Current NCCGLA Orthomagey for NC in B&W. Intersection coordinates locations provided by XCDOT Division 13 staff. nblarvey@ncdot.gov 8/9/2024

General Location 0 0.25 0.5 Miles



- ▲ ADA Curb Ramp, Construct (Brick)
- ▲ ADA Curb Ramp, Construct (New)
- ▲ ADA Curb Ramp, Remove
- △ ADA Curb Ramp, Replace Truncated Domes
- △ ADA Curb Ramp, Upgrade

▨ NC HPO Historic Districts

Contract# DM00511
R-5793KB Upgrades/Installation
WBS# 44923.3.23
FA# 4492312
Sheet 8

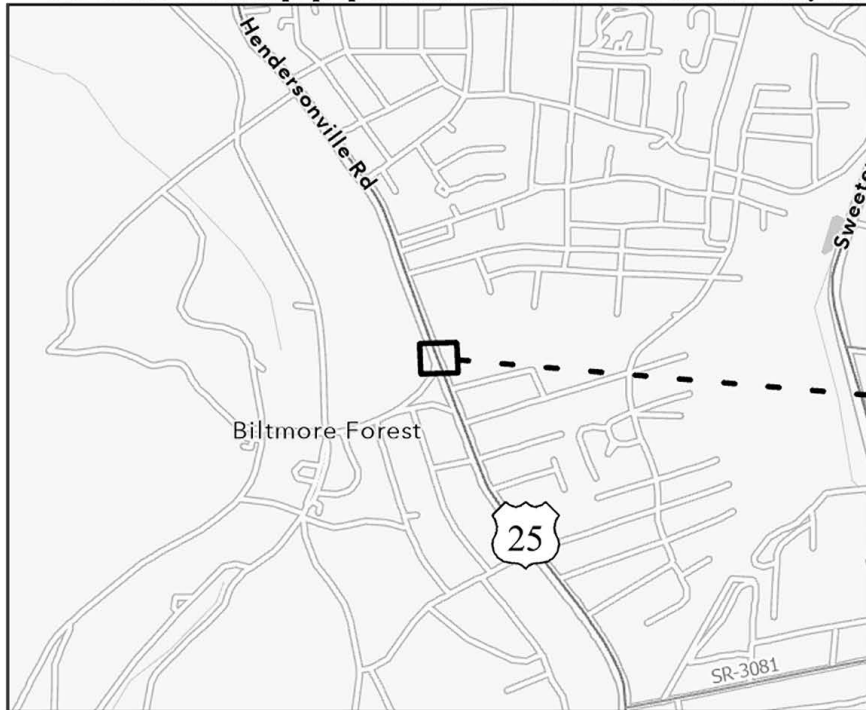


Major Route	Minor Route	Ramp #	Latitude	Longitude
US-25 (Hendersonville Rd)	Jeffress Ave (Pvt)	53B	35.546292	-82.534061
US-25 (Hendersonville Rd)	Jeffress Ave (Pvt)	52B	35.546264	-82.534014
US-25 (Hendersonville Rd)	Jeffress Ave (Pvt)	51B	35.546143	-82.533986
US-25 (Hendersonville Rd)	Jeffress Ave (Pvt)	50B	35.546096	-82.534001

Division	County	Municipality	Ramp ID	Latitude	Longitude	ASPHALT PLANT MIX, PAVEMENT REPAIR (TONS)	2'-6" CONCRETE CURB & GUTTER (LF)	4" CONCRETE SIDEWALK (SY)	REMOVE AND REPLACE CURB RAMPS (EA)	REMOVE CONCRETE CURB RAMPS (EA)	ADJUSTMENT OF METER BOXES OR VALVE BOXES (EA)	NOTES
13	Buncombe	Asheville	50B	35.54609642	-82.53400072	1	16	12		1		
			51B	35.54614304	-82.53398604			1	1			
			52B	35.54626424	-82.53401428		10	5	1			
			53B	35.54629209	-82.53406124		18	12	1	1		
						1	44	29	3	1	2	

*The above space is reserved for project quantities.

*One or more curb ramps proposed for construction within this sheet may fall within or may be adjacent to nearby NC HPO Historic Districts



Credits: Buncombe County, NC, State of North Carolina DOT, Esri, TomTom, Garmin, SafeGraph, GeoTechnologies, Inc, METI, NASA, USGS, EPA, NPS, US Census Bureau, USDA, USFWS. Current NCCGLA Orthomagey for NC in B&W. Intersection coordinates locations provided by NCDOT Division 13 staff. nblarvey@ncdot.gov 8/9/2024

General Location 0 0.25 0.5 Miles



- ▲ ADA Curb Ramp, Construct (Brick)
- ▲ ADA Curb Ramp, Construct (New)
- ▲ ADA Curb Ramp, Remove
- △ ADA Curb Ramp, Replace Truncated Domes
- △ ADA Curb Ramp, Upgrade

▨ NC HPO Historic Districts

Contract# DM00511
R-5793KB Upgrades/Installation
WBS# 44923.3.23
FA# 4492312
Sheet 9

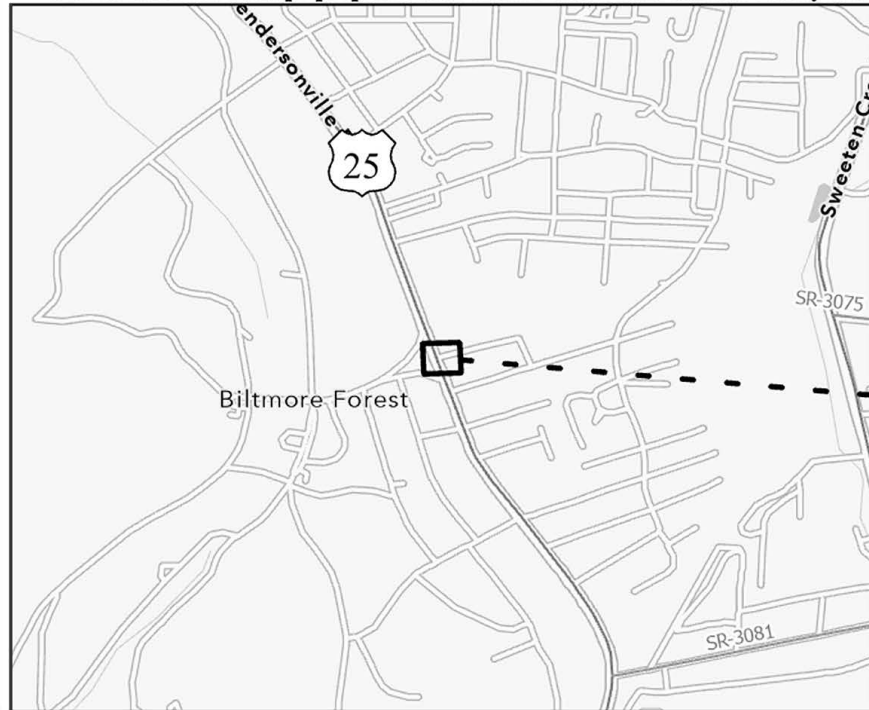


Major Route	Minor Route	Ramp #	Latitude	Longitude
US-25 (Hendersonville Rd)	704 Hendersonville Rd (Ingles)	70B	35.543989	-82.533198
US-25 (Hendersonville Rd)	780 Hendersonville Rd (Ingles)	69B	35.54395	-82.533167
US-25 (Hendersonville Rd)	795 Hendersonville Rd	71B	35.543928	-82.533413
US-25 (Hendersonville Rd)	780 Hendersonville Rd (Purl's Yarn Emporium)	68B	35.54375	-82.533081
US-25 (Hendersonville Rd)	828 Hendersonville Rd (Purl's Yarn Emporium)	67B	35.543699	-82.533084
US-25 (Hendersonville Rd)	Busbee Rd (Pvt)	72B	35.543653	-82.533328
US-25 (Hendersonville Rd)	Busbee Rd (Pvt)	73B	35.54345	-82.533249

Division	County	Municipality	Ramp ID	Latitude	Longitude	ASPHALT PLANT MIX, PAVEMENT REPAIR (TONS)	2'-6" CONCRETE CURB & GUTTER (LF)	4" CONCRETE SIDEWALK (SY)	REMOVE AND REPLACE CURB RAMPS (EA)	REMOVE CONCRETE CURB RAMPS (EA)	ADJUSTMENT OF MANHOLES (EA)	THERMOPLASTIC PAVEMENT MARKING LINES (24", 90 MILS) (LF)	REMOVAL OF PAVEMENT MARKING LINES (8") (LF)	NOTES
13	Buncombe	Asheville	67B	35.54369873	-82.53308402	2	18	12		1	1			
			68B	35.5437498	-82.53308056			1		110	146	INSTALL HI-VISIBILITY CROSSWALK BETWEEN 68B AND 69B.		
			69B	35.54395039	-82.53316736			1						
			70B	35.54398927	-82.53319761			1		106	140	INSTALL HI-VISIBILITY CROSSWALK BETWEEN 70B AND 71B.		
			71B	35.54392844	-82.53341255									
			72B	35.54365305	-82.53332798		18	12		1				
			73B	35.54345045	-82.5332489		20		1					
					2	56	24	3	3	1	216	286		

*The above space is reserved for project quantities.

*One or more curb ramps proposed for construction within this sheet may fall within or may be adjacent to nearby NC HPO Historic Districts



- ▲ ADA Curb Ramp, Construct (Brick)
- ▲ ADA Curb Ramp, Construct (New)
- ▲ ADA Curb Ramp, Remove
- △ ADA Curb Ramp, Replace Truncated Domes
- △ ADA Curb Ramp, Upgrade

▨ NC HPO Historic Districts

Contract# DM00511
R-5793KB Upgrades/Installation
WBS# 44923.3.23
FA# 4492312
Sheet 10



Major Route	Minor Route	Ramp #	Latitude	Longitude
US-25 (Hendersonville Rd)	Cornell St (Pvt)	86B	35.542982	-82.532808
US-25 (Hendersonville Rd)	Cornell St (Pvt)	85B	35.542953	-82.532761
US-25 (Hendersonville Rd)	Cornell St (Colton Mattress Factory)	84B	35.542834	-82.532707
US-25 (Hendersonville Rd)	Cornell St (Colton Mattress Factory)	83B	35.542791	-82.532731

Credits: Buncombe County, NC, State of North Carolina DOT, Esri, TomTom, Garmin, SafeGraph, GeoTechnologies, Inc, METI, NASA, USGS, EPA, NPS, US Census Bureau, USDA, USFWS. Current NCCGLA Orthomagey for NC in B&W. Intersection coordinates locations provided by NCDOT Division 13 staff nblarvey@ncdot.gov 8/9/2024

General Location 0 0.25 0.5 Miles

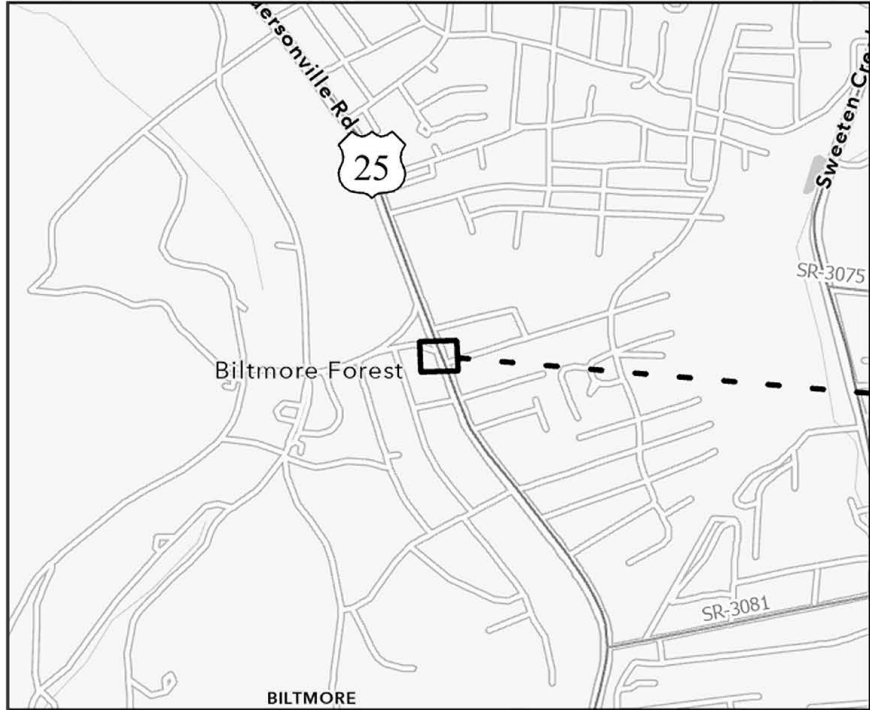


1" = 70'

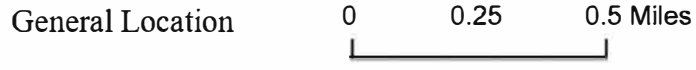
Division	County	Municipality	Ramp ID	Latitude	Longitude	ASPHALT PLANT MIX, PAVEMENT REPAIR (TONS)	2'-6" CONCRETE CURB & GUTTER (LF)	4" CONCRETE SIDEWALK (SY)	REMOVE AND REPLACE CURB RAMPS (EA)	REMOVE CONCRETE CURB RAMPS (EA)	NOTES
13	Buncombe	Asheville	83B	35.54279061	-82.53273066	1	18	12		1	
			84B	35.54283419	-82.53270728			1			
			85B	35.54295325	-82.53276124			1			
			86B	35.54298187	-82.5328082		19	13		1	
						1	37	25	2	2	

*The above space is reserved for project quantities.

*One or more curb ramps proposed for construction within this sheet may fall within or may be adjacent to nearby NC HPO Historic Districts



Credits: Buncombe County, NC, State of North Carolina DOT, Esri, TomTom, Garmin, SafeGraph, GeoTechnologies, Inc, METL, NASA, USGS, EPA, NPS, US Census Bureau, USDA, USFWS. Current NCCGLA Orthomagey for NC in B&W. Intersection coordinates locations provided by NCDOT Division 13 staff. nblarvey@ncdot.gov 8/9/2024



- ▲ ADA Curb Ramp, Construct (Brick)
- ▲ ADA Curb Ramp, Construct (New)
- ▲ ADA Curb Ramp, Remove
- △ ADA Curb Ramp, Replace Truncated Domes
- △ ADA Curb Ramp, Upgrade

▨ NC HPO Historic Districts

Contract# DM00511
R-5793KB Upgrades/Installation
WBS# 44923.3.23
FA# 4492312
Sheet 11

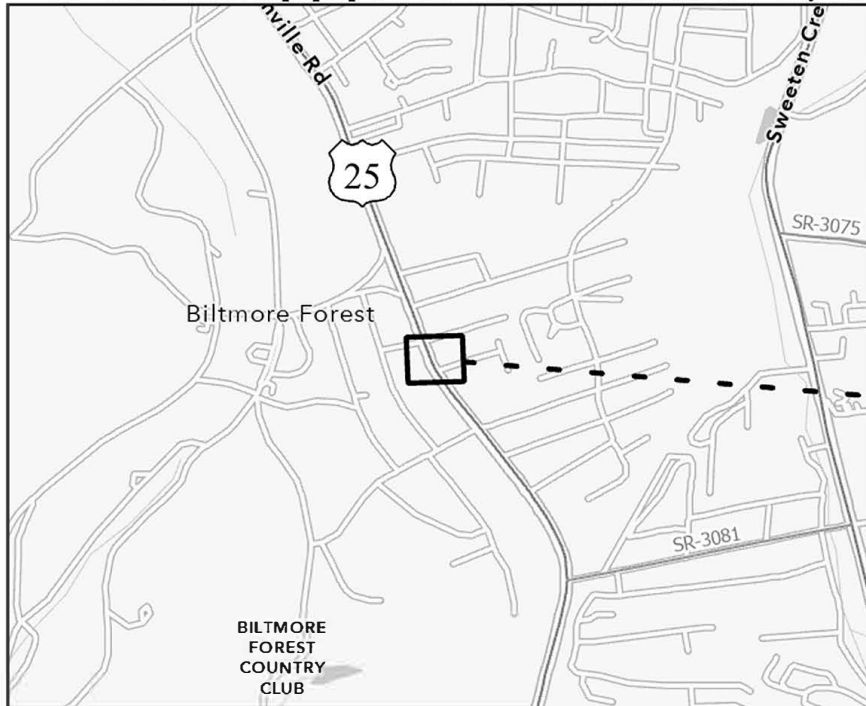


Major Route	Minor Route	Ramp #	Latitude	Longitude
US-25 (Hendersonville Rd)	Busbee Rd (Pvt)	74B	35.542316	-82.532833
US-25 (Hendersonville Rd)	Busbee Rd (Pvt)	75B	35.542146	-82.532768
US-25 (Hendersonville Rd)	Forest St (Pvt)	78B	35.542017	-82.532433
US-25 (Hendersonville Rd)	Forest St (Pvt)	77B	35.541993	-82.532388
US-25 (Hendersonville Rd)	Forest St (Pvt)	76B	35.541868	-82.53234

Division	County	Municipality	Ramp ID	Latitude	Longitude	ASPHALT PLANT MIX, PAVEMENT REPAIR (TONS)	2'-6" CONCRETE CURB & GUTTER (LF)	4" CONCRETE SIDEWALK (SY)	REMOVE AND REPLACE CURB RAMPS (EA)	REMOVE CONCRETE CURB RAMPS (EA)	ADJUSTMENT OF MANHOLES (EA)	ADJUSTMENT OF METER BOXES OR VALVE BOXES (EA)	NOTES
13	Buncombe	Asheville	74B	35.54231646	-82.5328333	1	18			1			
			75B	35.54214608	-82.53276805		16			1			
			76B	35.5418685	-82.53234032		10	5	1				
			77B	35.54199326	-82.53238794				1		1		
			78B	35.54201748	-82.53243259		17	12		1	1		
						1	61	17	2	3	1	1	

*The above space is reserved for project quantities.

*One or more curb ramps proposed for construction within this sheet may fall within or may be adjacent to nearby NC HPO Historic Districts



Credits: Buncombe County, NC, State of North Carolina DOT, Esri, TomTom, Garmin, SafeGraph, GeoTechnologies, Inc, METI, NASA, USGS, EPA, NPS, US Census Bureau, USDA, USFWS. Current NCCGLA Orthomagey for NC in B&W. Intersection coordinates locations provided by NCDOT Division 13 staff. nblharvey@ncdot.gov 8/9/2024

General Location 0 0.25 0.5 Miles



- ▲ ADA Curb Ramp, Construct (Brick)
- ▲ ADA Curb Ramp, Construct (New)
- ▲ ADA Curb Ramp, Remove
- △ ADA Curb Ramp, Replace Truncated Domes
- △ ADA Curb Ramp, Upgrade

▨ NC HPO Historic Districts

Contract# DM00511
R-5793KB Upgrades/Installation
WBS# 44923.3.23
FA# 4492312
Sheet 12

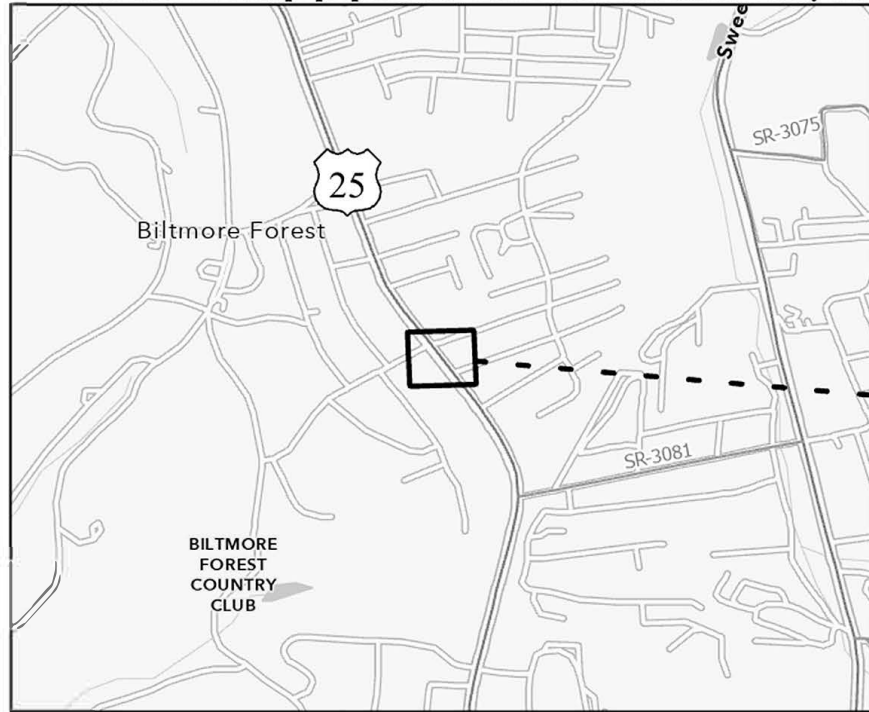


Major Route	Minor Route	Ramp #	Latitude	Longitude
US-25 (Hendersonville Rd)	Ardmore St (Pvt)	87B	35.540826	-82.531951
US-25 (Hendersonville Rd)	Seminole St (Pvt)	88B	35.5401	-82.531651
US-25 (Hendersonville Rd)	Seminole St (Pvt)	89B	35.539946	-82.531576

Division	County	Municipality	Ramp ID	Latitude	Longitude	ASPHALT PLANT MIX, PAVEMENT REPAIR (TONS)	2'-6" CONCRETE CURB & GUTTER (LF)	4" CONCRETE SIDEWALK (SY)	REMOVE AND REPLACE CURB RAMPS (EA)	NOTES
13	Buncombe	Asheville	87B	35.54082577	-82.5319512	1	15	10	1	
			88B	35.54009986	-82.53165072				1	
			89B	35.53994583	-82.53157575		3	1		
					1	15	13	3		

*The above space is reserved for project quantities.

*One or more curb ramps proposed for construction within this sheet may fall within or may be adjacent to nearby NC HPO Historic Districts



Credits: Buncombe County, NC, State of North Carolina DOT, Esri, TomTom, Garmin, SafeGraph, GeoTechnologies, Inc, METI, NASA, USGS, EPA, NPS, US Census Bureau, USDA, USFWS. Current NCCGLA Orthomagey for NC in B&W. Intersection coordinates locations provided by NCDOT Division 13 staff. nblarvey@ncdot.gov 8/9/2024

General Location 0 0.25 0.5 Miles



- ▲ ADA Curb Ramp, Construct (Brick)
- ▲ ADA Curb Ramp, Construct (New)
- ▲ ADA Curb Ramp, Remove
- △ ADA Curb Ramp, Replace Truncated Domes
- △ ADA Curb Ramp, Upgrade

▨ NC HPO Historic Districts

Contract# DM00511
R-5793KB Upgrades/Installation
WBS# 44923.3.23
FA# 4492312
Sheet 13

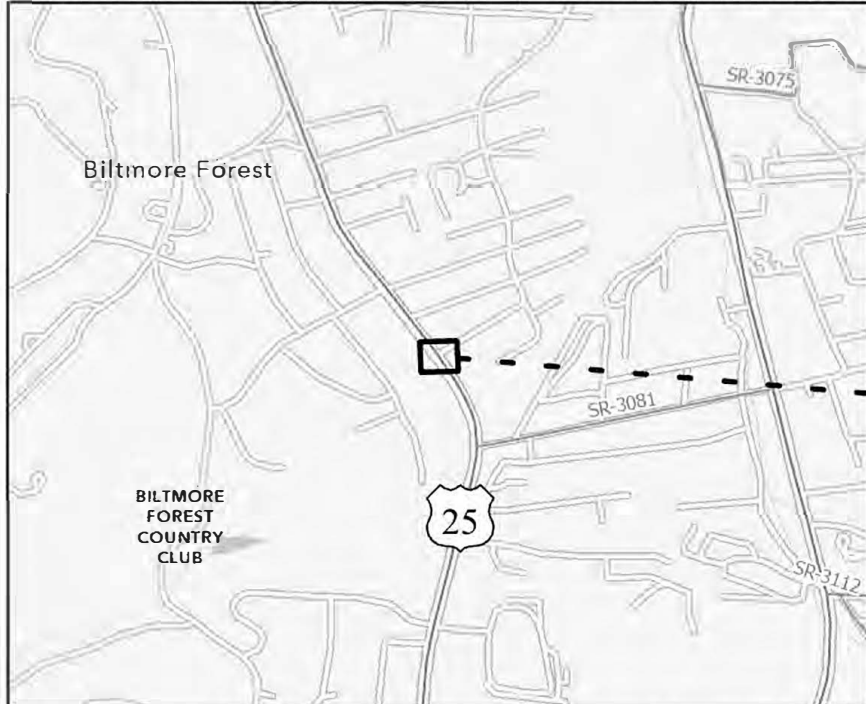


Major Route	Minor Route	Ramp #	Latitude	Longitude
US-25 (Hendersonville Rd)	Deanwood Cir (Pvt)	103B	35.538361	-82.530366
US-25 (Hendersonville Rd)	Browntown Rd (Pvt)	90B	35.538284	-82.530618
US-25 (Hendersonville Rd)	Deanwood Cir (Pvt)	102B	35.538234	-82.530269
US-25 (Hendersonville Rd)	Browntown Rd (Pvt)	91B	35.538187	-82.530568
US-25 (Hendersonville Rd)	Forestdale Dr (Pvt)	101B	35.537556	-82.52972
US-25 (Hendersonville Rd)	Forestdale Dr (Pvt)	100B	35.537434	-82.529632

Division	County	Municipality	Ramp ID	Latitude	Longitude	ASPHALT PLANT MIX, PAVEMENT REPAIR (TONS)	2'-6" CONCRETE CURB & GUTTER (LF)	4" CONCRETE SIDEWALK (SY)	REMOVE AND REPLACE CURB RAMPS (EA)	REMOVE CONCRETE CURB RAMPS (EA)	NOTES
13	Buncombe	Asheville	90B	35.53828371	-82.53061841	2	20			1	
			91B	35.53818717	-82.53056848		22			1	
			100B	35.53743372	-82.52963237		10	5	1		
			101B	35.53755564	-82.52972003				1		
			102B	35.53823377	-82.53026921		10	5	1		
			103B	35.53836145	-82.53036625		10	5	1		
							2	72	15	4	2

*The above space is reserved for project quantities.

*One or more curb ramps proposed for construction within this sheet may fall within or may be adjacent to nearby NC HPO Historic Districts



Credits: Buncombe County, NC, State of North Carolina DOT, Esri, TomTom, Garmin, SafeGraph, GeoTechnologies, Inc, METI, NASA, USGS, EPA, NPS, US Census Bureau, USDA, USFWS. Current NCCGIA Orthomosaic for NC in B&W. Intersection coordinates/locations provided by NCDOT Division 13 staff. 08/12/2024

General Location 0 0.25 0.5 Miles



- ▲ ADA Curb Ramp, Construct (Brick)
- ▲ ADA Curb Ramp, Construct (New)
- ▲ ADA Curb Ramp, Remove
- △ ADA Curb Ramp, Replace Truncated Domes
- △ ADA Curb Ramp, Upgrade

▨ NC HPO Historic Districts

Contract# DM00511
R-5793KB Upgrades/Installation
WBS# 44923.3.23
FA# 4492312
Sheet 14

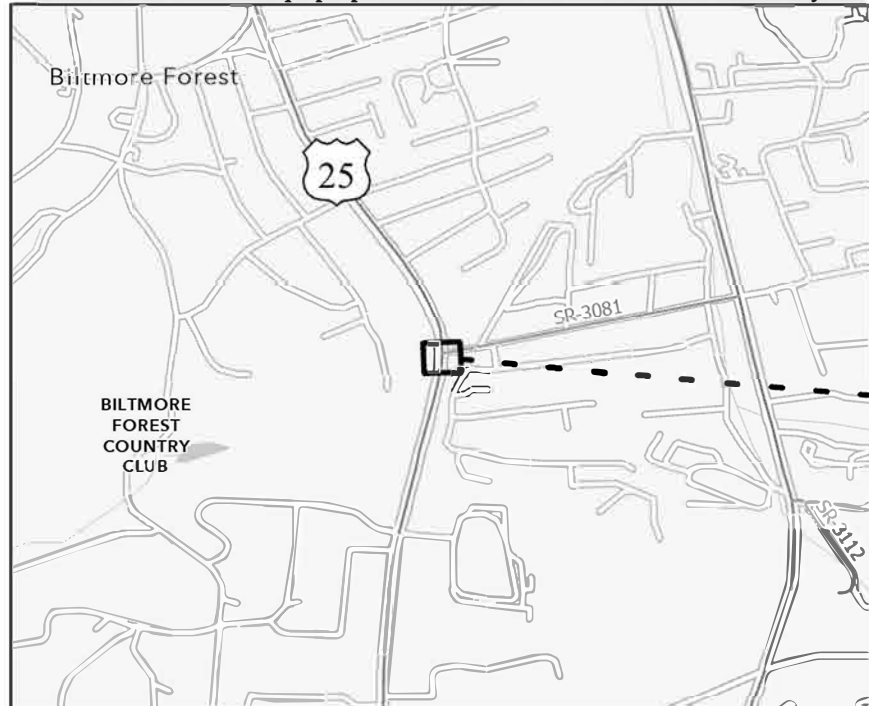


Major Route	Minor Route	Ramp #	Latitude	Longitude
US-25 (Hendersonville Rd)	Caribou Rd (Pvt)	97B	35.536529	-82.528951
US-25 (Hendersonville Rd)	Caribou Rd (Pvt)	99B	35.53639	-82.528867
US-25 (Hendersonville Rd)	1080 Hendersonville Rd	98B	35.536327	-82.528835
US-25 (Hendersonville Rd)	1075 Hendersonville Rd	92B	35.536235	-82.529036

Division	County	Municipality	Ramp ID	Latitude	Longitude	ASPHALT PLANT MIX, PAVEMENT REPAIR (TONS)	REMOVE AND REPLACE CURB RAMPS (EA)	THERMOPLASTIC PAVEMENT MARKING LINES (24", 90 MILS) (LF)	REMOVAL OF PAVEMENT MARKING LINES (8") (LF)	RELOCATE FIRE HYDRANT (EA)	FIRE HYDRANT LEG (LF)	NOTES
13	Buncombe	Asheville	92B	35.53623479	-82.52903558	2	1	90	120			INSTALL HI-VISIBILITY CROSSWALK ACROSS US-25 92B TO 98B
			97B	35.53652877	-82.52895091		1	72	95		INSTALL HI-VISIBILITY CROSSWALK ACROSS CARIBOU RD 97B TO 99B	
			98B	35.53632666	-82.52883511		1					
			99B	35.5363897	-82.52886697		1			1	10	
						2	4	162	215	1	10	

*The above space is reserved for project quantities.

*One or more curb ramps proposed for construction within this sheet may fall within or may be adjacent to nearby NC HPO Historic Districts



Credits: Buncombe County, NC, State of North Carolina DOT, Esri, TomTom, Garmin, SafeGraph, GeoTechnologies, Inc, METI, NASA, USGS, EPA, NPS, US Census Bureau, USDA, USFWS. Current NCCGLA Orthomagey for NC in B&W. Intersection coordinates locations provided by NCDOT Division 13 staff nblarvey@ncdot.gov 8/9/2024

General Location 0 0.25 0.5 Miles



- ▲ ADA Curb Ramp, Construct (Brick)
- ▲ ADA Curb Ramp, Construct (New)
- ▲ ADA Curb Ramp, Remove
- △ ADA Curb Ramp, Replace Truncated Domes
- △ ADA Curb Ramp, Upgrade

▨ NC HPO Historic Districts

Contract# DM00511
R-5793KB Upgrades/Installation
WBS# 44923.3.23
FA# 4492312
Sheet 15

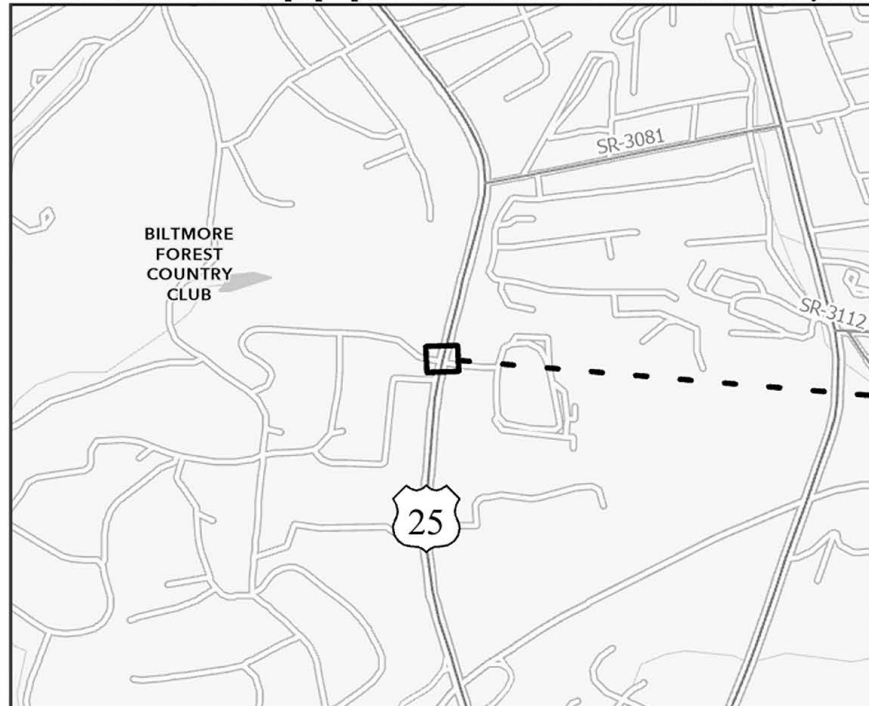


Major Route	Minor Route	Ramp #	Latitude	Longitude
US-25 (Hendersonville Rd)	Rock Hill Rd (SR-3081) (Rent AI)	96B	35.533913	-82.527721
US-25 (Hendersonville Rd)	Rock Hill Rd (SR-3081)	95B	35.533751	-82.527705
US-25 (Hendersonville Rd)	Rock Hill Rd (SR-3081)	93B	35.533681	-82.527757
US-25 (Hendersonville Rd)	1119 Hendersonville Rd	94B	35.533675	-82.527989

Division	County	Municipality	Ramp ID	Latitude	Longitude	ASPHALT PLANT MIX, PAVEMENT REPAIR (TONS)	2'-6" CONCRETE CURB & GUTTER (LF)	4" CONCRETE SIDEWALK (SY)	REMOVE AND REPLACE CURB RAMPS (EA)	THERMOPLASTIC PAVEMENT MARKING LINES (24", 90 MILS) (LF)	REMOVAL OF PAVEMENT MARKING LINES (8") (LF)	NOTES
13	Buncombe	Asheville	93B	35.53368057	-82.52775661	3		5	1	90	120	INSTALL HI-VISIBILITY CROSSWALK ACROSS US-25 93B TO 94B
			94B	35.53367495	-82.52798916		10	5	1			
			95B	35.53375078	-82.52770454				1	78	100	
			96B	35.53391284	-82.5277211		15	10	1		INSTALL HI-VISIBILITY CROSSWALK ACROSS ROCK HILL RD 95B TO 96B	
						3	25	20	4	168	220	

*The above space is reserved for project quantities.

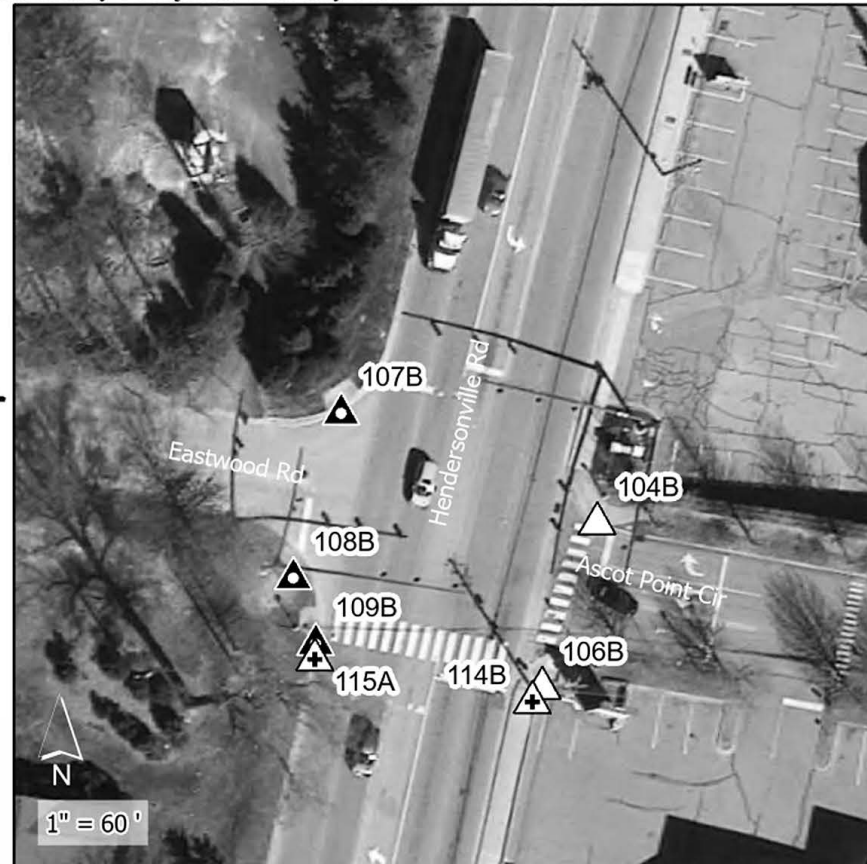
*One or more curb ramps proposed for construction within this sheet may fall within or may be adjacent to nearby NC HPO Historic Districts



Credits: Buncombe County, NC, State of North Carolina DOT, Esri, TomTom, Garmin, SafeGraph, GeoTechnologies, Inc., METI, NASA, USGS, EPA, NPS, US Census Bureau, USDA, USFWS. Current NCCGLA Orthomagey for NC in B&W. Intersection coordinates locations provided by NCDOT Division 13 staff nblarvey@ncdot.gov 8/9/2024

General Location

0 0.25 0.5 Miles



1" = 60'

- ▲ ADA Curb Ramp, Construct (Brick)
- ▲ ADA Curb Ramp, Construct (New)
- ▲ ADA Curb Ramp, Remove
- △ ADA Curb Ramp, Replace Truncated Domes
- △ ADA Curb Ramp, Upgrade

▨ NC HPO Historic Districts

Contract# DM00511
R-5793KB Upgrades/Installation
WBS# 44923.3.23
FA# 4492312
Sheet 16



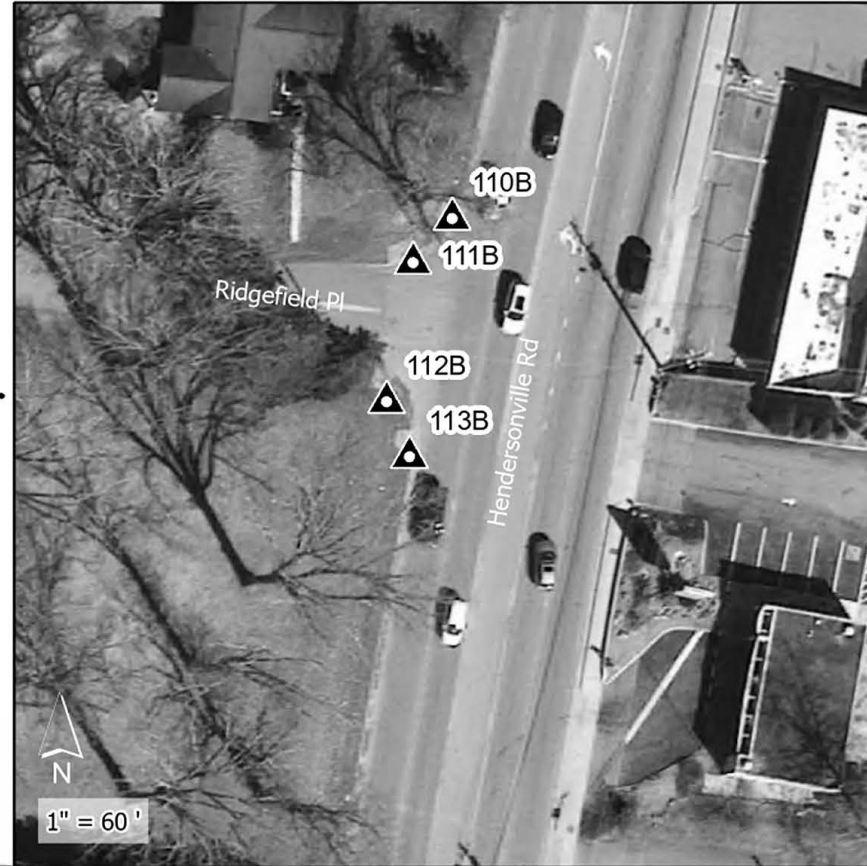
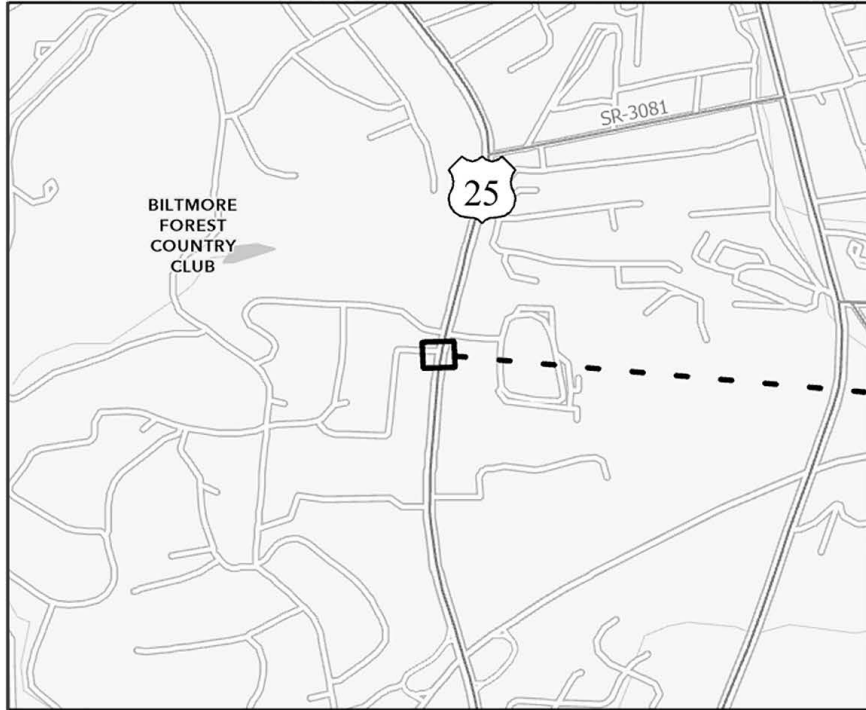
Major Route	Minor Route	Ramp #	Latitude	Longitude
US-25 (Hendersonville Rd)	Eastwood Rd (Pvt)	107B	35.528828	-82.529195
US-25 (Hendersonville Rd)	Ascot Point Cir (Pvt)	104B	35.528741	-82.528922
US-25 (Hendersonville Rd)	Eastwood Rd (Pvt)	108B	35.528685	-82.529239
US-25 (Hendersonville Rd)	Eastwood Rd (Pvt)	109B	35.528629	-82.529213
US-25 (Hendersonville Rd)	Eastwood (Pvt)	115A	35.528616	-82.529213
US-25 (Hendersonville Rd)	Ascot Point Cir (Pvt)	106B	35.528599	-82.528974
US-25 (Hendersonville Rd)	Ascot Point Cir (Pvt)	114B	35.528586	-82.528984

Division	County	Municipality	Ramp ID	Latitude	Longitude	ASPHALT PLANT MIX, PAVEMENT REPAIR (TONS)	2'-6" CONCRETE CURB & GUTTER (LF)	CONCRETE CURB RAMPS (EA)	REMOVE AND REPLACE CURB RAMPS (EA)	REMOVE CONCRETE SIDEWALK (SY)	REMOVE AND REPLACE 4" CONCRETE SIDEWALK (SY)	REMOVE CONCRETE CURB & GUTTER (LF)	REMOVE CONCRETE CURB RAMPS (EA)	ADJUSTMENT OF METER BOXES OR VALVE BOXES (EA)	THERMOPLASTIC PAVEMENT MARKING LINES (24", 90 MILS) (LF)	REMOVAL OF PAVEMENT MARKING LINES (24") (LF)	RELOCATE VALVE (EA)	PEDESTRIAN SIGNAL HEAD (16", 1 SECTION W/COUNTDOWN) (EA)	SIGNAL CABLE (LF)	LEAD-IN CABLE (14-2) (LF)	TYPE II POST W/ FOUNDATION (EA)	PEDESTRIAN SIGNAL REMOVAL (EA)	NOTES			
13	Buncombe	Asheville	104B	35.52874127	-82.52892224		5		1		10				60	60										
			106B	35.52859853	-82.52897371		5		1						1											
			107B	35.52882777	-82.52919494		13								1											
			108B	35.52868508	-82.5292389	2	15								1											
			109B	35.52862925	-82.52921305		15								1									1		
			114B	35.5285861	-82.52898356				1			7			15				1							
			115A	35.528616	-82.529213				1						15											
						2	53	2	2	7	10	30	3	1	60	60	1	1	250	250	1	1				

*COORDINATE WITH NCDOT DIVISION 13 TRAFFIC SERVICES PRIOR TO BEGINNING WORK AT THIS INTERSECTION

*The above space is reserved for project quantities.

*One or more curb ramps proposed for construction within this sheet may fall within or may be adjacent to nearby NC HPO Historic Districts



- ▲ ADA Curb Ramp, Construct (Brick)
- ▲ ADA Curb Ramp, Construct (New)
- ▲ ADA Curb Ramp, Remove
- △ ADA Curb Ramp, Replace Truncated Domes
- △ ADA Curb Ramp, Upgrade

▨ NC HPO Historic Districts

Contract# DM00511
R-5793KB Upgrades/Installation
WBS# 44923.3.23
FA# 4492312
Sheet 17



Credits: Buncombe County, NC, State of North Carolina DOT, Esri, TomTom, Garmin, SafeGraph, GeoTechnologies, Inc, METI, NASA, USGS, EPA, NPS, US Census Bureau, USDA, USFWS. Current NCCGLA Orthomagey for NC in B&W. Intersection coordinates locations provided by NCDOT Division 13 staff nblarvey@ncdot.gov 8/9/2024

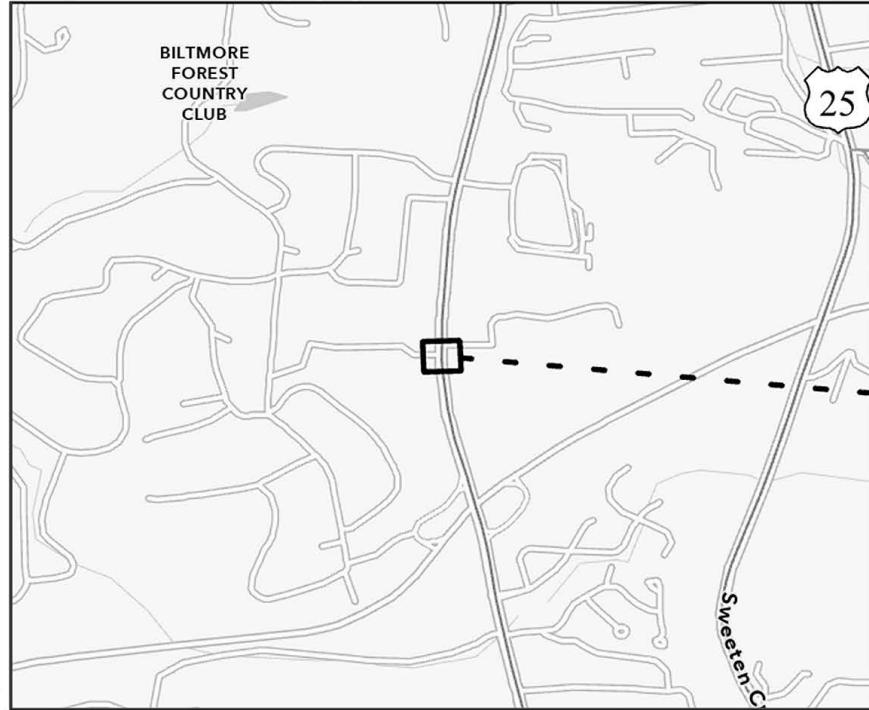
General Location 0 0.25 0.5 Miles

Major Route	Minor Route	Ramp #	Latitude	Longitude
US-25 (Hendersonville Rd)	Ridgefield Pl (Pvt)	110B	35.528301	-82.529293
US-25 (Hendersonville Rd)	Ridgefield Pl (Pvt)	111B	35.528262	-82.529332
US-25 (Hendersonville Rd)	Ridgefield Pl (Pvt)	112B	35.528142	-82.529355
US-25 (Hendersonville Rd)	Ridgefield Pl (Pvt)	113B	35.528096	-82.529329

Division	County	Municipality	Ramp ID	Latitude	Longitude	ASPHALT PLANT MIX, PAVEMENT REPAIR (TONS)	2'-6" CONCRETE CURB & GUTTER (LF)	REMOVE CONCRETE CURB RAMPS (EA)	NOTES
13	Buncombe	Asheville	110B	35.52830131	-82.52929254	1	16	1	
			111B	35.52826233	-82.52933199		13	1	
			112B	35.52814226	-82.52935462		14	1	
			113B	35.5280958	-82.52932857		16	1	
						1	59	4	

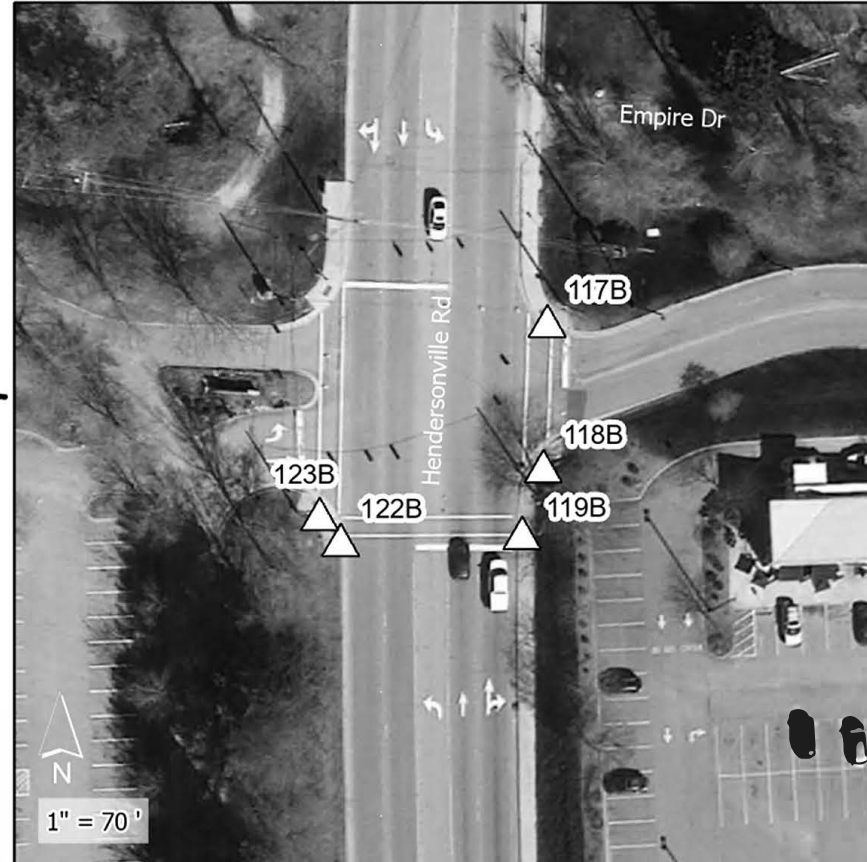
*The above space is reserved for project quantities.

*One or more curb ramps proposed for construction within this sheet may fall within or may be adjacent to nearby NC HPO Historic Districts



Credits: Buncombe County, NC, State of North Carolina DOT, Esri, TomTom, Garmin, SafeGraph, GeoTechnologies, Inc. METI, NASA, USGS, EPA, NPS, US Census Bureau, USDA, USFWS. Current NCCGLA Orthomagey for NC in B&W. Intersection coordinates locations provided by NCDOT Division 13 staff. nblarvey@ncdot.gov 8/9/2024

General Location 0 0.25 0.5 Miles



1" = 70'

- ADA Curb Ramp, Construct (Brick)
- ADA Curb Ramp, Replace Truncated Domes
- ADA Curb Ramp, Construct (New)
- ADA Curb Ramp, Upgrade
- ADA Curb Ramp, Remove

NC HPO Historic Districts

Contract# DM00511
R-5793KB Upgrades/Installation
WBS# 44923.3.23
FA# 4492312
Sheet 18

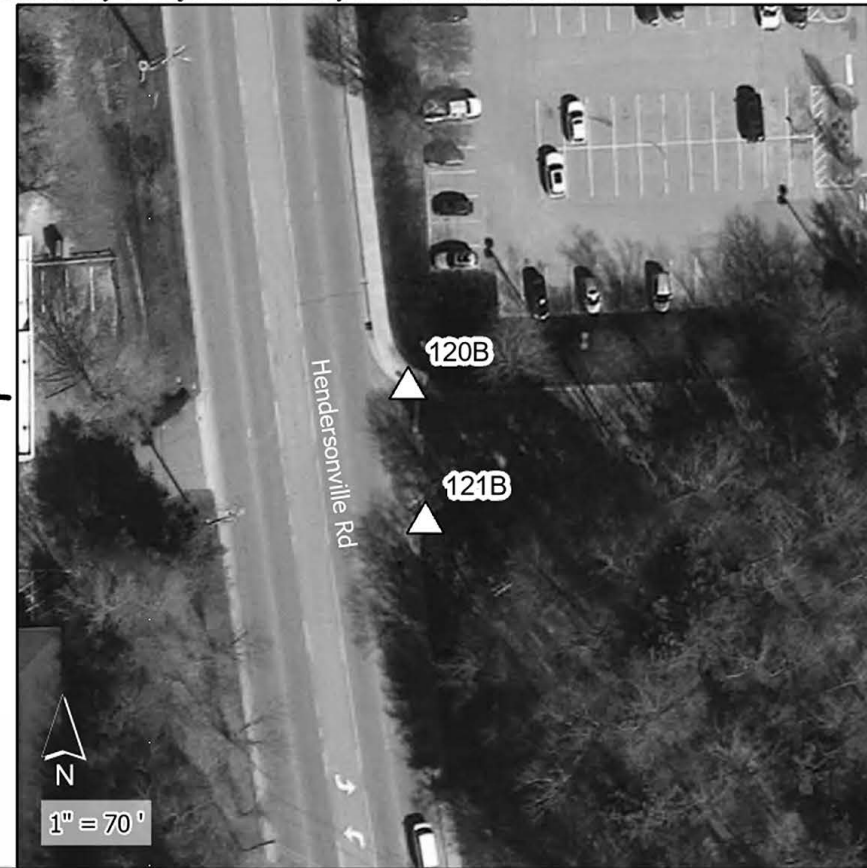
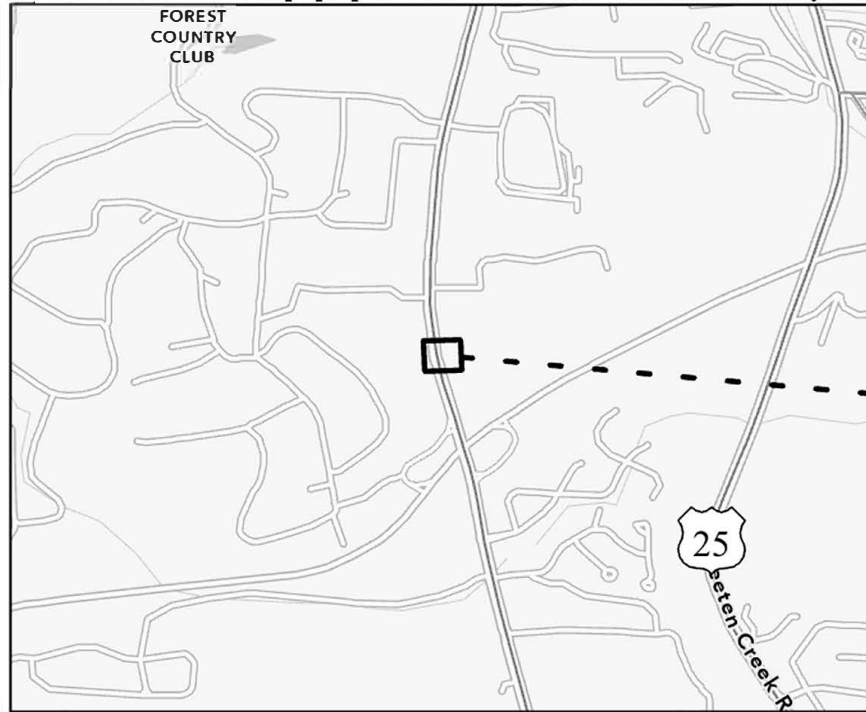


Major Route	Minor Route	Ramp #	Latitude	Longitude
US-25 (Hendersonville Rd)	Starbucks	117B	35.52386	-82.529421
US-25 (Hendersonville Rd)	Starbucks	118B	35.523714	-82.529419
US-25 (Hendersonville Rd)	Carolina Day School	123B	35.523659	-82.529691
US-25 (Hendersonville Rd)	Starbucks	119B	35.523647	-82.529442
US-25 (Hendersonville Rd)	Carolina Day School	122B	35.523633	-82.529664

Division	County	Municipality	Ramp ID	Latitude	Longitude	ASPHALT PLANT MIX, PAVEMENT REPAIR (TONS)	2'-6" CONCRETE CURB & GUTTER (LF)	REMOVE AND REPLACE CURB RAMPS (EA)	ADJUSTMENT OF METER BOXES OR VALVE BOXES (EA)	THERMOPLASTIC PAVEMENT MARKING LINES (24", 90 MILS) (LF)	REMOVAL OF PAVEMENT MARKING LINES (8") (LF)	RELOCATE FIRE HYDRANT (EA)	FIRE HYDRANT LEG (LF)	RELOCATE VALVE (EA)	NOTES	
13	Buncombe	Asheville	117B	35.52385975	-82.52942068	2		1		72	94				INSTALL HI-VISIBILITY CROSSWALK FROM 117B TO 118B	
			118B	35.52371439	-82.52941917			1								
			119B	35.52364694	-82.52944222			1			96	125	1	10	1	INSTALL HI-VISIBILITY CROSSWALK ACROSS US-25 119B TO 122B
			122B	35.52363346	-82.52966408			1								
			123B	35.52365861	-82.52969094		5	1			114	150				
						2	5	5	1	282	369	1	10	1		

*The above space is reserved for project quantities.

*One or more curb ramps proposed for construction within this sheet may fall within or may be adjacent to nearby NC HPO Historic Districts



- ADA Curb Ramp, Construct (Brick)
- ADA Curb Ramp, Construct (New)
- ADA Curb Ramp, Remove
- ADA Curb Ramp, Replace Truncated Domes
- ADA Curb Ramp, Upgrade

Contract# DM00511
R-5793KB Upgrades/Installation
WBS# 44923.3.23
FA# 4492312
Sheet 19



NC HPO Historic Districts

Major Route	Minor Route	Ramp #	Latitude	Longitude
US-25 (Hendersonville Rd)	1378 Hendersonville Rd (The Fresh Market)	120B	35.522187	-82.529234
US-25 (Hendersonville Rd)	1378 Hendersonville Rd (Strip mall)	121B	35.522053	-82.529207

Credits: Buncombe County, NC, State of North Carolina DOT, Esri, TomTom, Garmin, SafeGraph, GeoTechnologies, Inc. METI, NASA, USGS, EPA, NPS, US Census Bureau, USDA, USFWS. Current NCCGLA Orthomagey for NC in B&W. Intersection coordinates locations provided by NCDOT Division 13 staff nblharvey@ncdot.gov 8/9/2024

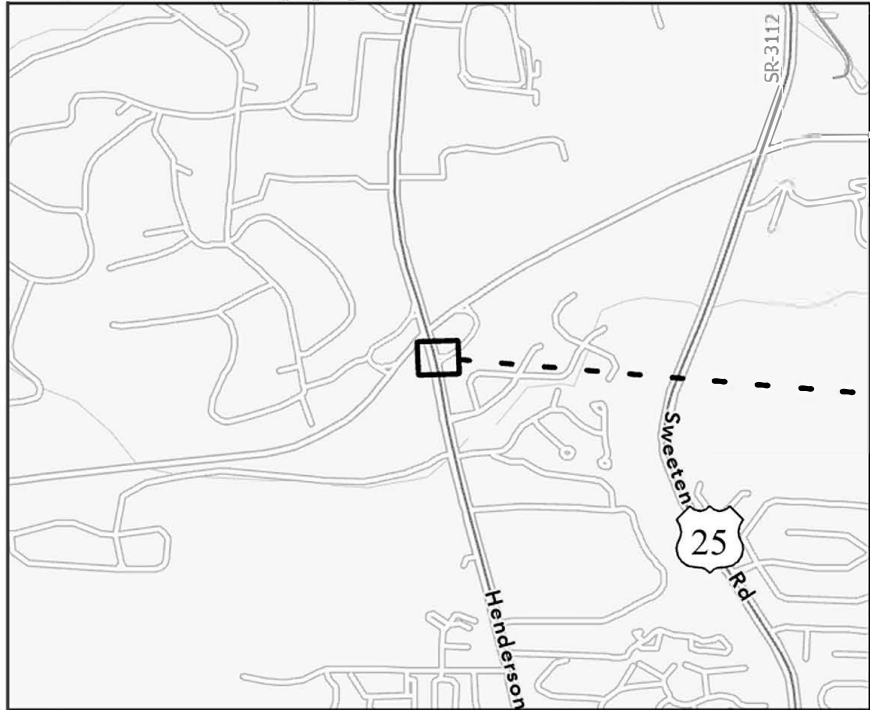
General Location 0 0.25 0.5 Miles

1" = 70'

Division	County	Municipality	Ramp ID	Latitude	Longitude	ASPHALT PLANT MIX, PAVEMENT REPAIR (TONS)	REMOVE AND REPLACE CURB RAMPS (EA)	NOTES
13	Buncombe	Asheville	120B	35.52218687	-82.52923414	1	1	
			121B	35.52205307	-82.52920708		1	
					1	2		

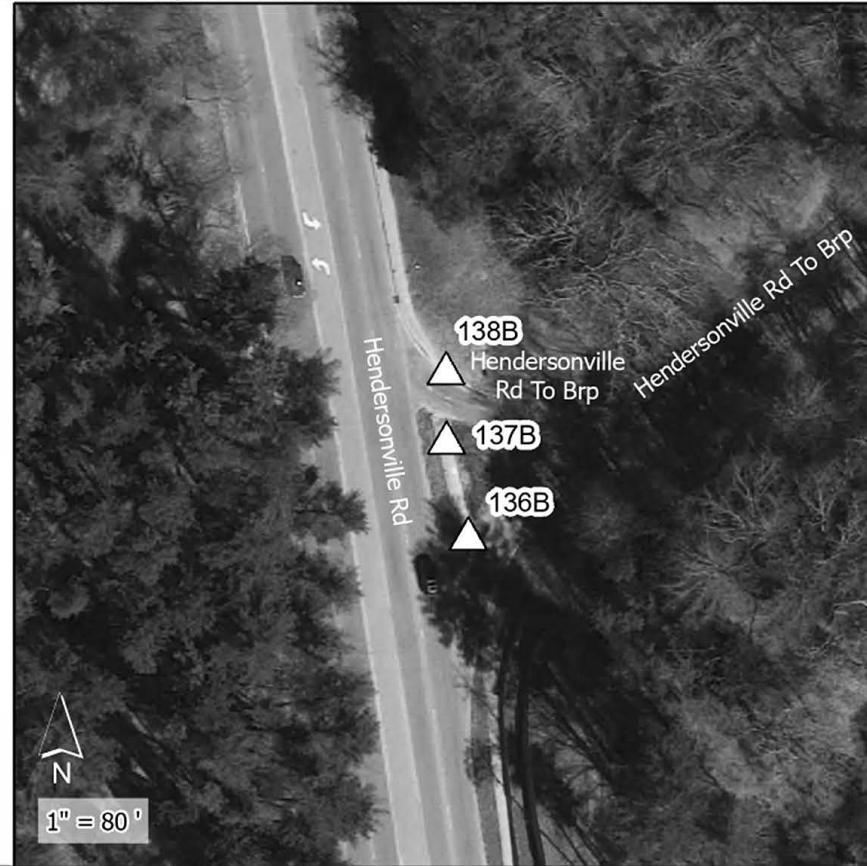
*The above space is reserved for project quantities.

*One or more curb ramps proposed for construction within this sheet may fall within or may be adjacent to nearby NC HPO Historic Districts



Credits: Buncombe County, NC, State of North Carolina DOT, Esri, TomTom, Garmin, SafeGraph, GeoTechnologies, Inc. METI, NASA, USGS, EPA, NPS, US Census Bureau, USDA, USFWS. Current NCCGLA Orthomagey for NC in B&W. Intersection coordinates locations provided by NCDOT Division 13 staff. nblarvey@ncdot.gov 8/9/2024

General Location 0 0.25 0.5 Miles



- ▲ ADA Curb Ramp, Construct (Brick)
- ▲ ADA Curb Ramp, Construct (New)
- ▲ ADA Curb Ramp, Remove
- △ ADA Curb Ramp, Replace Truncated Domes
- △ ADA Curb Ramp, Upgrade

Contract# DM00511
R-5793KB Upgrades/Installation
WBS# 44923.3.23
FA# 4492312
Sheet 20



▨ NC HPO Historic Districts

Major Route	Minor Route	Ramp #	Latitude	Longitude
US-25 (Hendersonville Rd)	Blue Ridge Parkway Exit	138B	35.518797	-82.528256
US-25 (Hendersonville Rd)	Blue Ridge Parkway Exit	137B	35.518717	-82.528252
US-25 (Hendersonville Rd)	Blue Ridge Parkway Entrance	136B	35.518609	-82.528216

Division	County	Municipality	Ramp ID	Latitude	Longitude	ASPHALT PLANT MIX, PAVEMENT REPAIR (TONS)	REMOVE AND REPLACE CURB RAMPS (EA)	NOTES
13	Buncombe	Asheville	136B	35.51860861	-82.5282163		1	
			137B	35.51871743	-82.52825152	1	1	
			138B	35.51879664	-82.52825565		1	
					1	3		

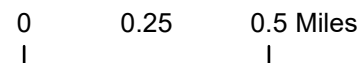
*The above space is reserved for project quantities.

*One or more curb ramps proposed for construction within this sheet may fall within or may be adjacent to nearby NC HPO Historic Districts



Credits: NC Center for Geographic Information and Analysis, Sources: Esri, TomTom, Garmin, FAO, NOAA, USGS, © OpenStreetMap contributors, and the GIS User Community. Current NCCGIA Orthoimagery for NC in B&W. Intersection coordinates/locations provided by NCDOT Division 13 staff. nbharvey@ncdot.gov 5/8/2026

General Location



- ▲ ADA Curb Ramp, Construct (Brick)
- ▲ ADA Curb Ramp, Construct (New)
- ▲ ADA Curb Ramp, Remove
- △ ADA Curb Ramp, Replace Truncated Domes
- △ ADA Curb Ramp, Upgrade

▨ NC HPO Historic Districts

Contract# DM00511
R-5793KB Upgrades/Installation
WBS# 44923.3.23
FA# 4492312
Sheet 21



Major Route	Minor Route	Ramp #	Latitude	Longitude
US-25 (Hendersonville Rd)	Clovelly Way (Pvt)	135B	35.517019	-82.527926
US-25 (Hendersonville Rd)	Clovelly Way (Pvt)	133B	35.516791	-82.527887

Division	County	Municipality	Ramp ID	Latitude	Longitude	ASPHALT PLANT MIX, PAVEMENT REPAIR (TONS)	2'-6" CONCRETE CURB & GUTTER (LF)	4" CONCRETE SIDEWALK (SY)	REMOVE & REPLACE CURB RAMPS (EA)	NOTES
13	Buncombe	Asheville	133B	35.51679083	-82.52788691	1	5	5	1	
			135B	35.51701879	-82.52792592		5	7	1	
						1	10	12	2	

*The above space is reserved for project quantities.

*One or more curb ramps proposed for construction within this sheet may fall within or may be adjacent to nearby NC HPO Historic Districts



Credits: Buncombe County, NC, State of North Carolina DOT, Esri, TomTom, Garmin, SafeGraph, GeoTechnologies, Inc., METI, NASA, USGS, EPA, NPS, US Census Bureau, USDA, USFWS. Current NCCGLA Orthomagey for NC in B&W. Intersection coordinates/locations provided by NCDOT Division 13 staff. nblarvey@ncdot.gov 8/9/2024

General Location 0 0.25 0.5 Miles



1" = 90'

- ▲ ADA Curb Ramp, Construct (Brick)
- ▲ ADA Curb Ramp, Construct (New)
- ▲ ADA Curb Ramp, Remove
- △ ADA Curb Ramp, Replace Truncated Domes
- △ ADA Curb Ramp, Upgrade

▨ NC HPO Historic Districts

Contract# DM00511
R-5793KB Upgrades/Installation
WBS# 44923.3.23
FA# 4492312
Sheet 22

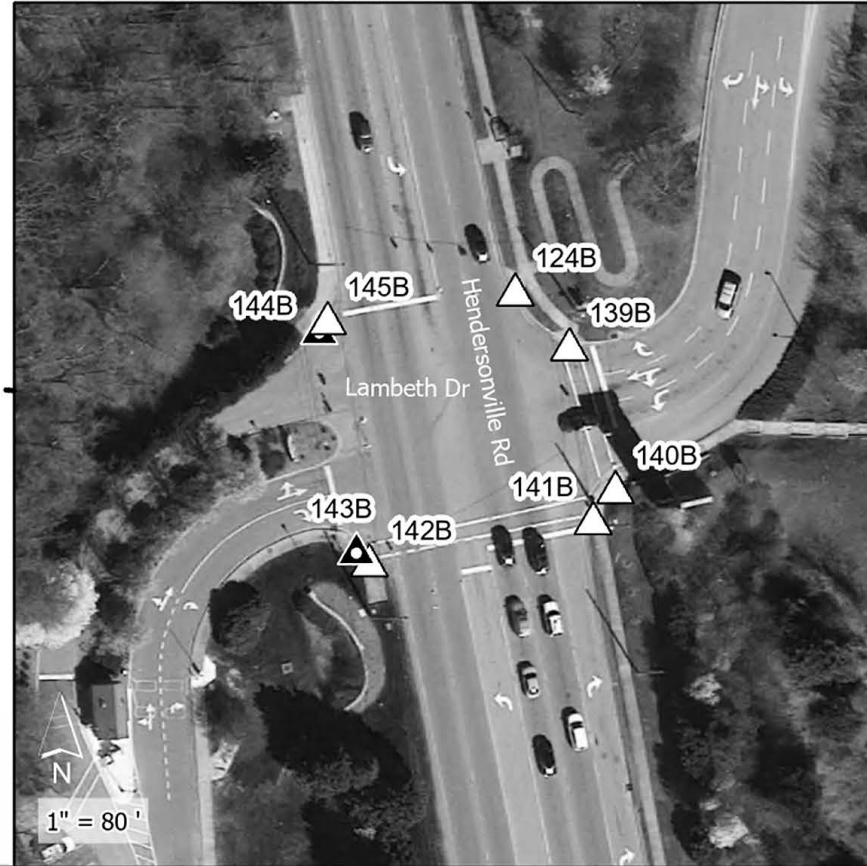
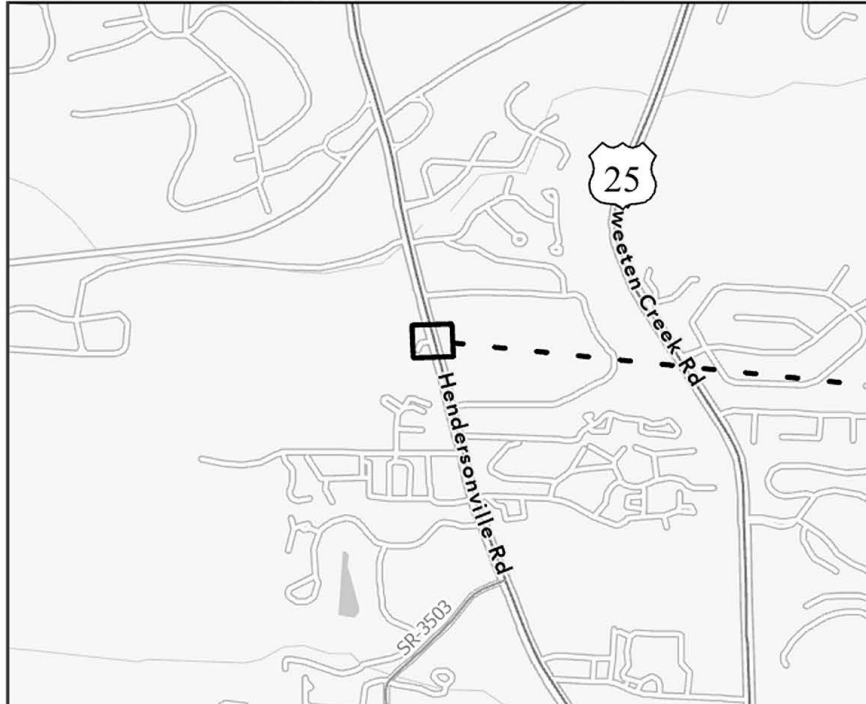


Major Route	Minor Route	Ramp #	Latitude	Longitude
US-25 (Hendersonville Rd)	Deerlake Dr (Pvt)	132B	35.515968	-82.527689
US-25 (Hendersonville Rd)	Deerlake Dr (Pvt)	130B	35.515792	-82.527645
US-25 (Hendersonville Rd)	Deerlake Dr (Pvt)	129B	35.515728	-82.527654

Division	County	Municipality	Ramp ID	Latitude	Longitude	ASPHALT PLANT MIX, PAVEMENT REPAIR (TONS)	2'-6" CONCRETE CURB & GUTTER (LF)	REMOVE AND REPLACE CURB RAMPS (EA)	REMOVE AND REPLACE 4" CONCRETE SIDEWALK (SY)	THERMOPLASTIC PAVEMENT MARKING LINES (24", 90 MILS) (LF)	REMOVAL OF PAVEMENT MARKING LINES (8") (LF)	NOTES
13	Buncombe	Asheville	129B	35.51572768	-82.5276537	1		1		102	126	INSTALL HI-VISIBILITY CROSSWALK ACROSS US-25
			130B	35.51579214	-82.52764476			1		96	120	INSTALL HI-VISIBILITY CROSSWALK ACROSS DEERLAKE DR 130B TO 132B
			132B	35.51596817	-82.52768865		21		2			EXISTING RAMP IS COMPLIANT. REPLACE EXISTING SIDEWALK.
						1	21	2	2	198	246	

*The above space is reserved for project quantities.

*One or more curb ramps proposed for construction within this sheet may fall within or may be adjacent to nearby NC HPO Historic Districts



- ▲ ADA Curb Ramp, Construct (Brick)
- ▲ ADA Curb Ramp, Construct (New)
- ▲ ADA Curb Ramp, Remove
- △ ADA Curb Ramp, Replace Truncated Domes
- △ ADA Curb Ramp, Upgrade

Contract# DM00511
R-5793KB Upgrades/Installation
WBS# 44923.3.23
FA# 4492312
Sheet 23



▨ NC HPO Historic Districts

Major Route	Minor Route	Ramp #	Latitude	Longitude
US-25 (Hendersonville Rd)	1636 Hendersonville Rd (Walmart)	124B	35.513019	-82.52696
US-25 (Hendersonville Rd)	Lambeth Dr (Pvt)	145B	35.512978	-82.527221
US-25 (Hendersonville Rd)	Lambeth Dr (Pvt)	144B	35.512967	-82.527232
US-25 (Hendersonville Rd)	1636 Hendersonville Rd (Walmart)	139B	35.512958	-82.526882
US-25 (Hendersonville Rd)	1636 Hendersonville Rd (Walmart)	140B	35.512797	-82.52681
US-25 (Hendersonville Rd)	1636 Hendersonville Rd (Walmart)	141B	35.512761	-82.52684
US-25 (Hendersonville Rd)	Lambeth Dr (Pvt)	143B	35.512717	-82.527169
US-25 (Hendersonville Rd)	Lambeth Dr (Pvt)	142B	35.512703	-82.527151

Credits: Buncombe County, NC, State of North Carolina DOT, Esri, TomTom, Garmin, SafeGraph, GeoTechnologies, Inc, METI, NASA, USGS, EPA, NPS, US Census Bureau, USDA, USFWS. Current NCCGLA Orthomagey for NC in B&W. Intersection coordinates locations provided by NCDOT Division 13 staff nblarvey@ncdot.gov 8/9/2024

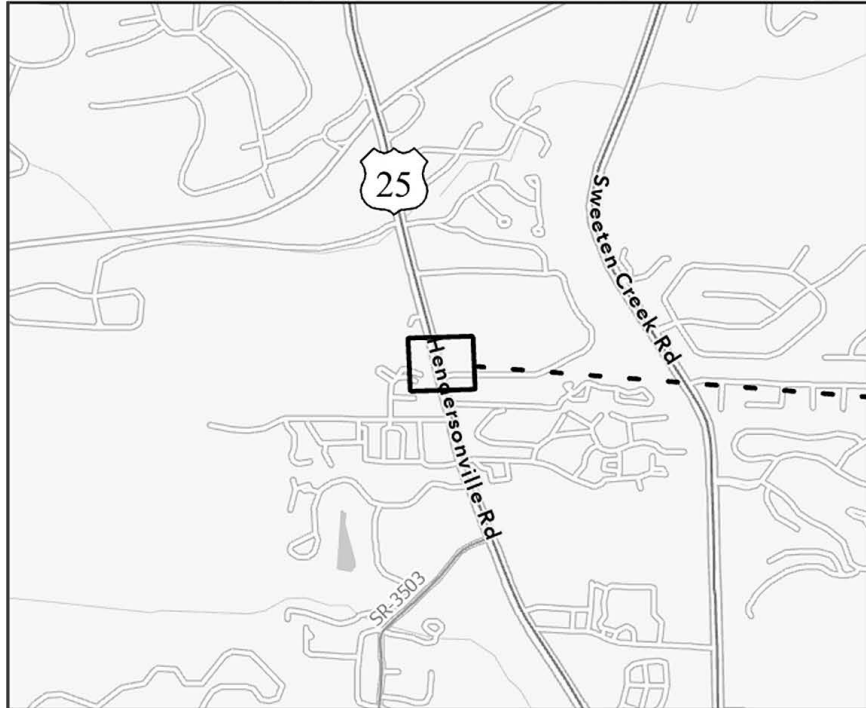
General Location 0 0.25 0.5 Miles

Division	County	Municipality	Ramp ID	Latitude	Longitude	ASPHALT PLANT MIX, PAVEMENT REPAIR (TONS)	2'-6" CONCRETE CURB & GUTTER (LF)	REMOVE AND REPLACE CURB RAMPS (EA)	REMOVE AND REPLACE 4" CONCRETE SIDEWALK (SY)	REMOVE CONCRETE CURB RAMPS (EA)	THERMOPLASTIC PAVEMENT MARKING LINES (24", 90 MILS) (LF)	REMOVAL OF PAVEMENT MARKING LINES (4") (LF)	REMOVAL OF PAVEMENT MARKING LINES (8") (LF)	REMOVAL OF PAVEMENT MARKING LINES (24") (LF)	PEDESTRIAN SIGNAL HEAD (16", 1 SECTION W/COUNTDOWN) (EA)	SIGNAL CABLE (LF)	LEAD-IN CABLE (14-2) (LF)	TYPE II POST W/ FOUNDATION (EA)	NOTES			
13	Buncombe	Asheville	124B	35.51301859	-82.52696018	3	17			1	112	40		40	1	250	250		INSTALL HI-VISIBILITY CROSSWALK ACROSS US-25 124B TO 145B			
			139B	35.51295824	-82.52688176				84		112									INSTALL HI-VISIBILITY CROSSWALK ACROSS US-25 139B TO 140B		
			140B	35.51279671	-82.5268103																	
			141B	35.51276052	-82.52683997				138		180										INSTALL HI-VISIBILITY CROSSWALK ACROSS US-25 141B TO 142B	
			142B	35.51270322	-82.52715089															1		
			143B	35.51271653	-82.5271695																	
			144B	35.51296652	-82.52723243				10				1									
			145B	35.51297822	-82.52722123						1	10						1	250	250		
					3	27	6	10	2	334	40	292	40	2	500	500	1					

*COORDINATE WITH NCDOT DIVISION 13 TRAFFIC SERVICES PRIOR TO BEGINNING WORK AT THIS INTERSECTION

*The above space is reserved for project quantities.

*One or more curb ramps proposed for construction within this sheet may fall within or may be adjacent to nearby NC HPO Historic Districts



Credits: Buncombe County, NC, State of North Carolina DOT, Esri, TomTom, Garmin, SafeGraph, GeoTechnologies, Inc, METI, NASA, USGS, EPA, NPS, US Census Bureau, USDA, USFWS. Current NCCGLA Orthomagey for NC in B&W. Intersection coordinates locations provided by NCDOT Division 13 staff. nblarvey@ncdot.gov 8/9/2024

General Location 0 0.25 0.5 Miles



- ▲ ADA Curb Ramp, Construct (Brick)
- ▲ ADA Curb Ramp, Construct (New)
- ▲ ADA Curb Ramp, Remove
- △ ADA Curb Ramp, Replace Truncated Domes
- △ ADA Curb Ramp, Upgrade

▨ NC HPO Historic Districts

Contract# DM00511
R-5793KB Upgrades/Installation
WBS# 44923.3.23
FA# 4492312
Sheet 24



Major Route	Minor Route	Ramp #	Latitude	Longitude
US-25 (Hendersonville Rd)	Walmart Entrance	1A	35.511889	-82.526626
US-25 (Hendersonville Rd)	Walmart Entrance	2A	35.511698	-82.526578
US-25 (Hendersonville Rd)	Peachtree Rd (Pvt)	3A	35.510989	-82.526396
US-25 (Hendersonville Rd)	Peachtree Rd (Pvt)	5A	35.510747	-82.526344
US-25 (Hendersonville Rd)	Peachtree Rd (Pvt)	6A	35.510695	-82.526349

Division	County	Municipality	Ramp ID	Latitude	Longitude	ASPHALT PLANT MIX, PAVEMENT REPAIR (TONS)	REMOVE AND REPLACE CURB RAMPS (EA)	REMOVE AND REPLACE 4" CONCRETE SIDEWALK (SY)	REMOVE AND REPLACE 2'-6" CURB & GUTTER (LF)	ADJUSTMENT OF METER BOXES OR VALVE BOXES (EA)	THERMOPLASTIC PAVEMENT MARKING LINES (24", 90 MILS) (LF)	REMOVAL OF PAVEMENT MARKING LINES (8") (LF)	RELOCATE VALVE (EA)	NOTES
13	Buncombe	Asheville	1A	35.51188923	-82.52662613		1							
			2A	35.51169831	-82.52657834		1		10	1				
			3A	35.51098855	-82.52639645	2	1	10	15	2	120	95	1	INSTALL HI-VISIBILITY CROSSWALK MARKINGS FROM 3A TO 5A.
			5A	35.51074743	-82.52634428		1	5	15					
			6A	35.51069471	-82.52634882		1			1	96	128		INSTALL HI-VISIBILITY CROSSWALK MARKINGS ACROSS US-25.
						2	5	15	40	4	216	223	1	

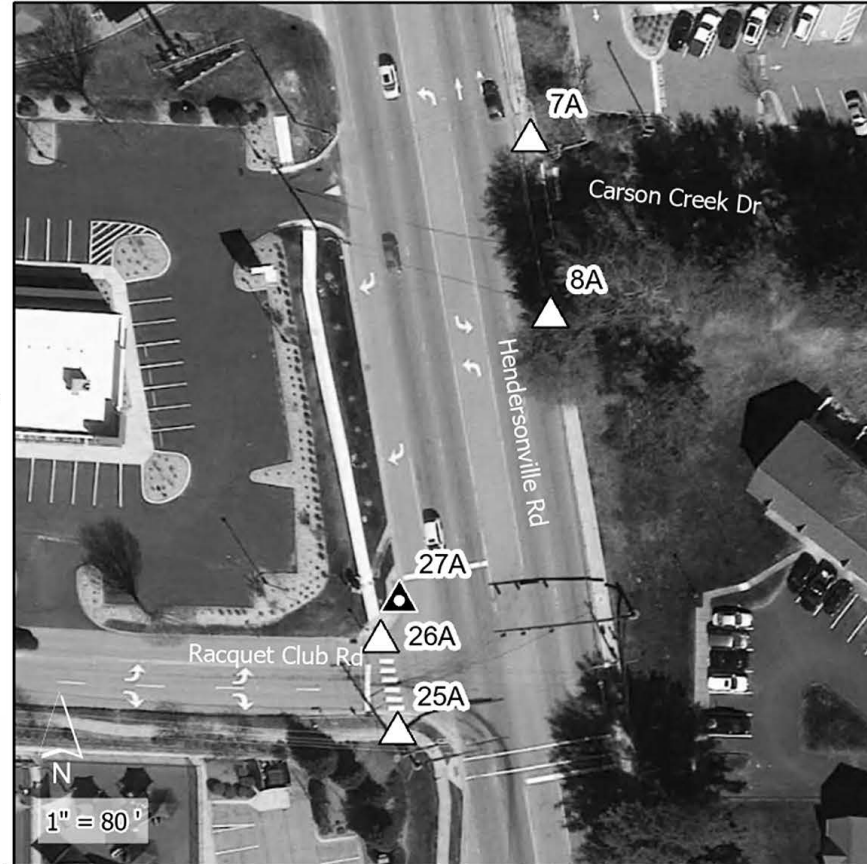
*The above space is reserved for project quantities.

*One or more curb ramps proposed for construction within this sheet may fall within or may be adjacent to nearby NC HPO Historic Districts



Credits: Buncombe County, NC, State of North Carolina DOT, Esri, TomTom, Garmin, SafeGraph, GeoTechnologies, Inc, METI, NASA, USGS, EPA, NPS, US Census Bureau, USDA, USFWS. Current NCCGLA Orthomagey for NC in B&W. Intersection coordinates locations provided by NCDOT Division 13 staff nblarvey@ncdot.gov 8/9/2024

General Location 0 0.25 0.5 Miles



- ADA Curb Ramp, Construct (Brick)
- ADA Curb Ramp, Construct (New)
- ADA Curb Ramp, Remove
- ADA Curb Ramp, Replace Truncated Domes
- ADA Curb Ramp, Upgrade

NC HPO Historic Districts

Contract# DM00511
R-5793KB Upgrades/Installation
WBS# 44923.3.23
FA# 4492312
Sheet 25

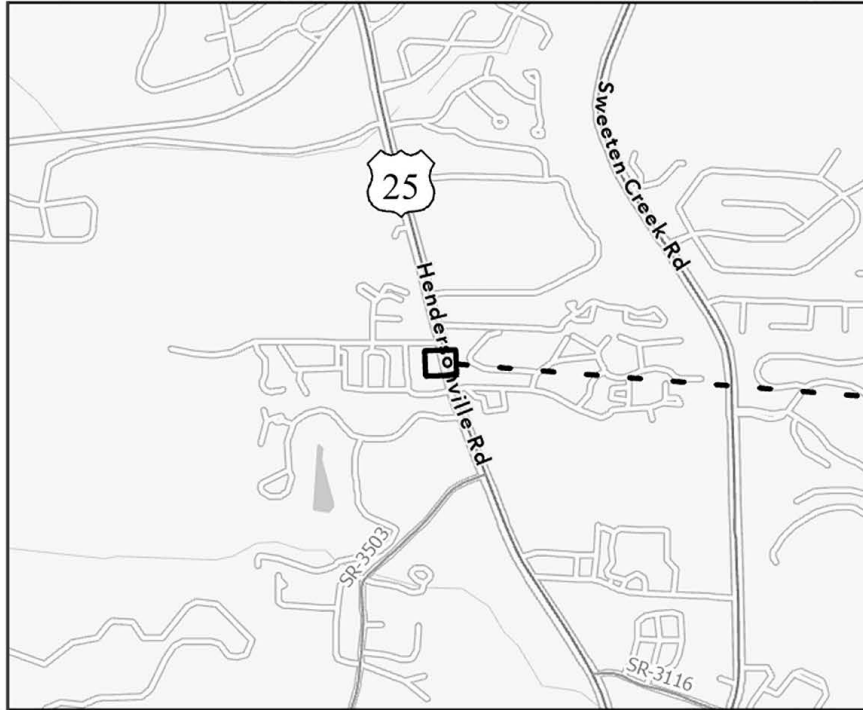


Major Route	Minor Route	Ramp #	Latitude	Longitude
US-25 (Hendersonville Rd)	Carson Creek Drive (Pvt)	7A	35.510066	-82.526176
US-25 (Hendersonville Rd)	Carson Creek Drive (Pvt)	8A	35.509865	-82.52614
US-25 (Hendersonville Rd)	Racquet Club Rd (Pvt)	27A	35.509534	-82.526337
US-25 (Hendersonville Rd)	Racquet Club Rd (Pvt)	26A	35.509487	-82.526361
US-25 (Hendersonville Rd)	Racquet Club Rd (Pvt)	25A	35.509382	-82.526332

Division	County	Municipality	Ramp ID	Latitude	Longitude	ASPHALT PLANT MIX, PAVEMENT REPAIR (TONS)	2'-6" CONCRETE CURB & GUTTER (LF)	REMOVE AND REPLACE CURB RAMPS (EA)	REMOVE AND REPLACE 4" CONCRETE SIDEWALK (SY)	REMOVE AND REPLACE 2'-6" CURB & GUTTER (LF)	REMOVE CONCRETE CURB RAMPS (EA)	THERMOPLASTIC PAVEMENT MARKING LINES (24", 90 MILS) (LF)	REMOVAL OF PAVEMENT MARKING LINES (8") (LF)	NOTES	
13	Buncombe	Asheville	7A	35.51006556	-82.52617638	2		1	10	15					
			8A	35.50986507	-82.52613955			1		10					
			25A	35.50938246	-82.52633245					15	5	1	98	130	INSTALL HI-VISIBILITY CROSSWALK ACROSS US-25
			26A	35.50948684	-82.52636086			1							
			27A	35.5095339	-82.52633682		30				1				
						2	30	3	25	30	2	98	130		

*The above space is reserved for project quantities.

*One or more curb ramps proposed for construction within this sheet may fall within or may be adjacent to nearby NC HPO Historic Districts



Credits: Buncombe County, NC, State of North Carolina DOT, Esri, TomTom, Garmin, SafeGraph, GeoTechnologies, Inc, METI, NASA, USGS, EPA, NPS, US Census Bureau, USDA, USFWS. Current NCCGLA Orthomagey for NC in B&W. Intersection coordinates locations provided by NCDOT Division 13 staff nblarvey@ncdot.gov 8/9/2024

General Location 0 0.25 0.5 Miles



- ADA Curb Ramp, Construct (Brick)
- ADA Curb Ramp, Construct (New)
- ADA Curb Ramp, Remove
- ADA Curb Ramp, Replace Truncated Domes
- ADA Curb Ramp, Upgrade

NC HPO Historic Districts

Contract# DM00511
R-5793KB Upgrades/Installation
WBS# 44923.3.23
FA# 4492312
Sheet 26

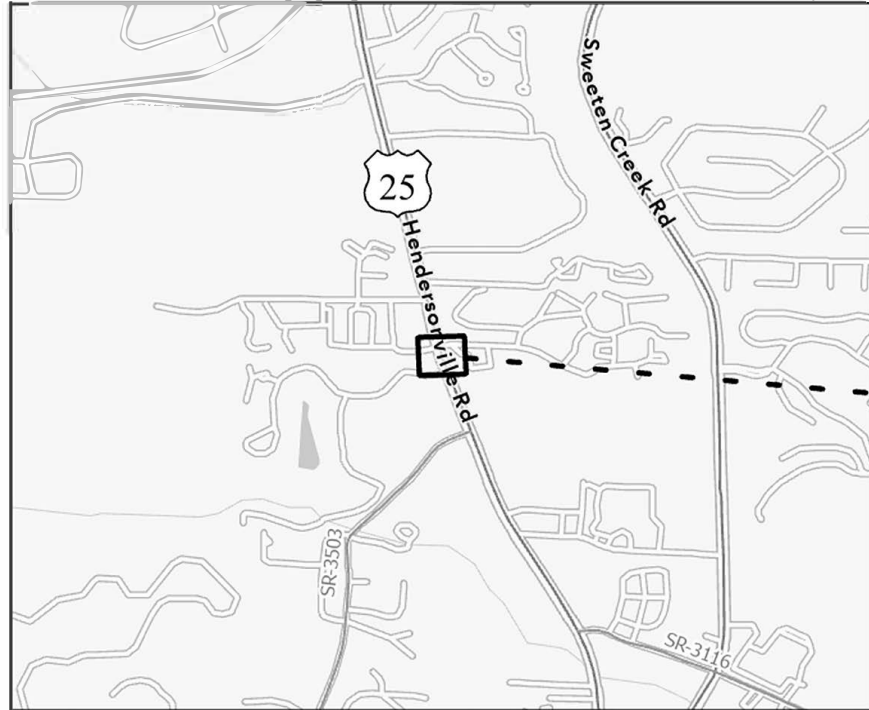


Major Route	Minor Route	Ramp #	Latitude	Longitude
US-25 (Hendersonville Rd)	McDonald's	24A	35.508988	-82.526218
US-25 (Hendersonville Rd)	McDonald's	23A	35.508926	-82.526201
US-25 (Hendersonville Rd)	McDonald's	22A	35.508901	-82.526195
US-25 (Hendersonville Rd)	McDonald's	21A	35.508853	-82.526191

Division	County	Municipality	Ramp ID	Latitude	Longitude	ASPHALT PLANT MIX, PAVEMENT REPAIR (TONS)	CONCRETE CURB RAMPS (EA)	REMOVE AND REPLACE CURB RAMPS (EA)	NOTES
13	Buncombe	Asheville	21A	35.50885347	-82.52619112	1		1	
			22A	35.5089007	-82.52619476		1		
			23A	35.50892572	-82.52620093		1		
			24A	35.50898817	-82.52621793			1	
						1	2	2	

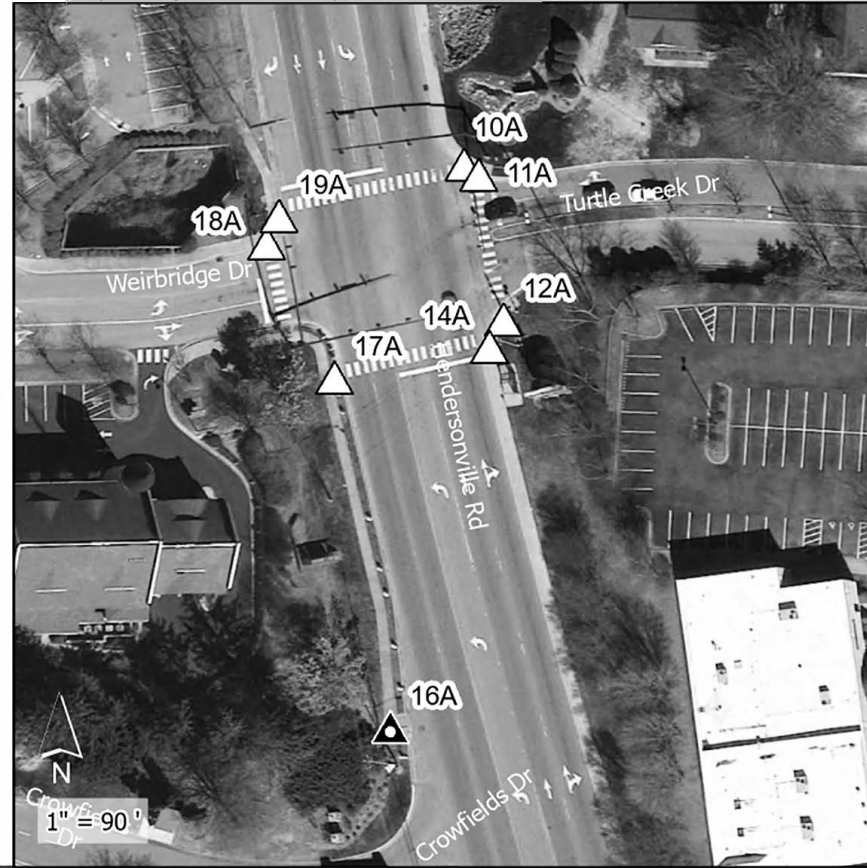
*The above space is reserved for project quantities.

*One or more curb ramps proposed for construction within this sheet may fall within or may be adjacent to nearby NC HPO Historic Districts



Credits: Buncombe County, NC, State of North Carolina DOT, Esri, TomTom, Garmin, SafeGraph, GeoTechnologies, Inc. METI, NASA, USGS, EPA, NPS, US Census Bureau, USDA, USFWS. Current NCCGLA Orthomimagery for NC in B&W. Intersection coordinates: local@ons provided by NCDOT Division 13 staff nblharvey@ncdot.gov 8/9/2024

General Location 0 0.25 0.5 Miles



- ▲ ADA Curb Ramp, Construct (Brick)
- ▲ ADA Curb Ramp, Construct (New)
- ▲ ADA Curb Ramp, Remove
- △ ADA Curb Ramp, Replace Truncated Domes
- △ ADA Curb Ramp, Upgrade

▨ NC HPO Historic Districts

Contract# DM00511
R-5793KB Upgrades/Installation
WBS# 44923.3.23
FA# 4492312
Sheet 27



Major Route	Minor Route	Ramp #	Latitude	Longitude
US-25 (Hendersonville Rd)	Turtle Creek Drive (Pvt)	10A	35.508186	-82.525687
US-25 (Hendersonville Rd)	Turtle Creek Drive (Pvt)	11A	35.508174	-82.525663
US-25 (Hendersonville Rd)	Weirbridge Drive (Pvt)	19A	35.508112	-82.525975
US-25 (Hendersonville Rd)	Weirbridge Drive (Pvt)	18A	35.508076	-82.525993
US-25 (Hendersonville Rd)	Turtle Creek Drive (Pvt)	12A	35.507989	-82.525616
US-25 (Hendersonville Rd)	Turtle Creek Drive (Pvt)	14A	35.507953	-82.525637
US-25 (Hendersonville Rd)	First Horizon Bank	17A	35.507906	-82.525879
US-25 (Hendersonville Rd)	First Horizon Bank	16A	35.50746	-82.525771

Division	County	Municipality	Ramp ID	Latitude	Longitude	ASPHALT PLANT MIX, PAVEMENT REPAIR (TONS)	2'-6" CONCRETE CURB & GUTTER (LF)	4" CONCRETE SIDEWALK (SY)	REMOVE AND REPLACE CURB RAMPS (EA)	REMOVE AND REPLACE 4" CONCRETE SIDEWALK (SY)	REMOVE AND REPLACE 2'-6" CURB & GUTTER (LF)	REMOVE CONCRETE CURB RAMPS (EA)	ADJUSTMENT OF METER BOXES OR VALVE BOXES (EA)	NOTES
13	Buncombe	Asheville	10A	35.50818633	-82.5256868	3			1	10	10			
			11A	35.50817375	-82.52566311		1			1				
			12A	35.50798894	-82.52561605		1		10					
			14A	35.50795305	-82.52563656		1	10	10					
			16A	35.50745994	-82.52577123		8	9		1				
			17A	35.50790642	-82.52587858		1	10						
			18A	35.50807588	-82.52599265		1	10	10					
			19A	35.50811175	-82.52597492		1	10	10	1				
						3	8	9	7	50	50	1	2	

*The above space is reserved for project quantities.

*One or more curb ramps proposed for construction within this sheet may fall within or may be adjacent to nearby NC HPO Historic Districts



- ▲ ADA Curb Ramp, Construct (Brick)
- ▲ ADA Curb Ramp, Construct (New)
- ▲ ADA Curb Ramp, Remove
- △ ADA Curb Ramp, Replace Truncated Domes
- △ ADA Curb Ramp, Upgrade

Contract# DM00511
R-5793KB Upgrades/Installation
WBS# 44923.3.23
FA# 4492312
Sheet 28



▨ NC HPO Historic Districts

Major Route	Minor Route	Ramp #	Latitude	Longitude
US-25 (Hendersonville Rd)	Golden Chips	28A	35.505568	-82.524719
US-25 (Hendersonville Rd)	Publix	29A	35.505499	-82.524669
US-25 (Hendersonville Rd)	Publix	30A	35.50542	-82.524648
US-25 (Hendersonville Rd)	Publix	31A	35.50534	-82.524621
US-25 (Hendersonville Rd)	Publix	32A	35.505266	-82.524588

Credits: Buncombe County, NC, State of North Carolina DOT, Esri, TomTom, Garmin, SafeGraph, GeoTechnologies, Inc, METI, NASA, USGS, EPA, NPS, US Census Bureau, USDA, USFWS. Current NCCGLA Orthomagey for NC in B&W. Intersection coordinates locations provided by NCDOT Division 13 staff. nblarvey@ncdot.gov 8/9/2024

General Location 0 0.25 0.5 Miles

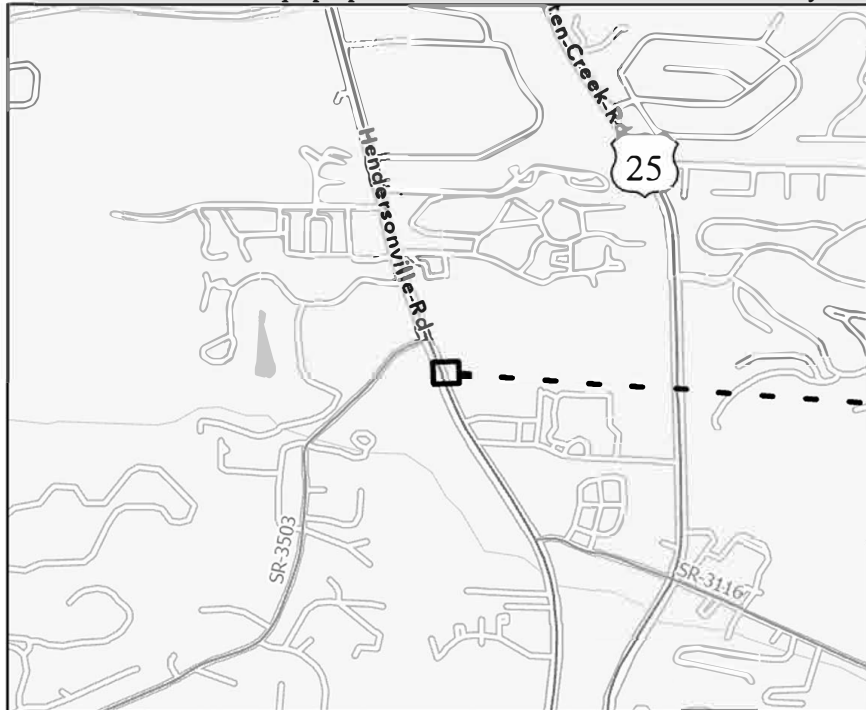


1" = 60'

Division	County	Municipality	Ramp ID	Latitude	Longitude	ASPHALT PLANT MIX, PAVEMENT REPAIR (TONS)	RETROFIT EXISTING CONCRETE CURB RAMPS (EA)	REMOVE AND REPLACE CURB RAMPS (EA)	ADJUSTMENT OF METER BOXES OR VALVE BOXES (EA)	NOTES
13	Buncombe	Asheville	28A	35.50556838	-82.52471862	3		1	1	
			29A	35.50549895	-82.52466852			1		
			30A	35.50542038	-82.52464758		1			
			31A	35.50534023	-82.52462094			1		
			32A	35.50526578	-82.524588			1		
					3	1	4	1		

*The above space is reserved for project quantities.






*One or more curb ramps proposed for construction within this sheet may fall within or may be adjacent to nearby NC HPO Historic Districts



Credits: Buncombe County, NC, State of North Carolina DOT, Esri, TomTom, Garmin, SafeGraph, GeoTechnologies, Inc, METI, NASA, USGS, EPA, NPS, US Census Bureau, USDA, USFWS. Current NCCGLA Orthomagey for NC in B&W. Intersection coordinates locations provided by NCDOT Division 13 staff. nblarvey@ncdot.gov 8/9/2024

General Location 0 0.25 0.5 Miles



-  ADA Curb Ramp, Construct (Brick)
-  ADA Curb Ramp, Construct (New)
-  ADA Curb Ramp, Remove
-  ADA Curb Ramp, Replace Truncated Domes
-  ADA Curb Ramp, Upgrade

 NC HPO Historic Districts

Contract# DM00511
R-5793KB Upgrades/Installation
WBS# 44923.3.23
FA# 4492312
Sheet 29

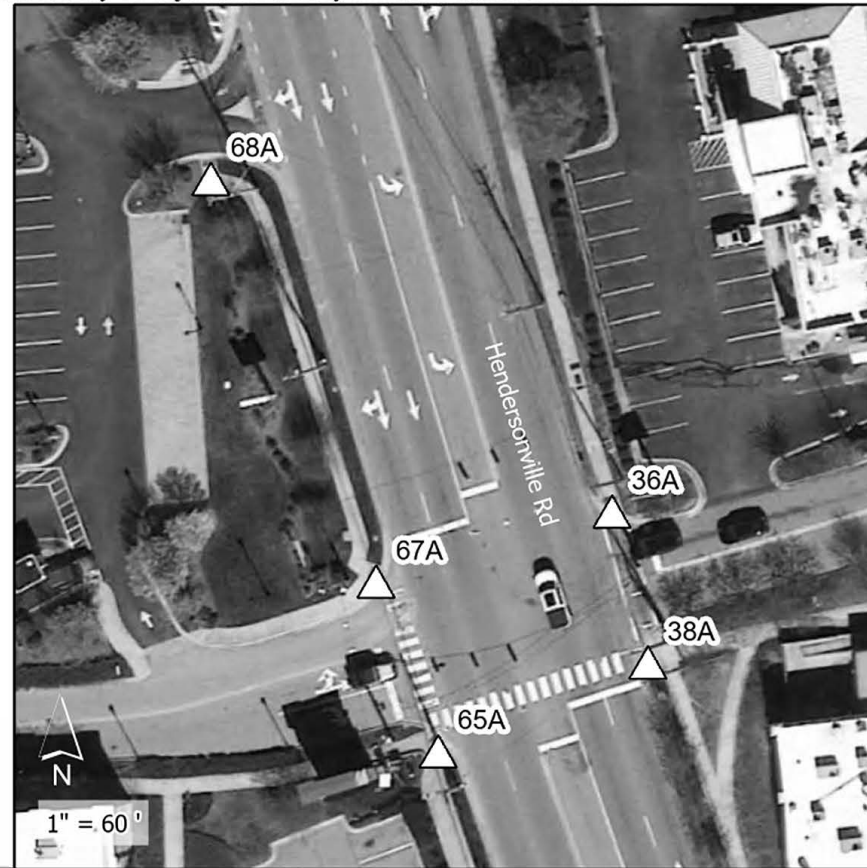
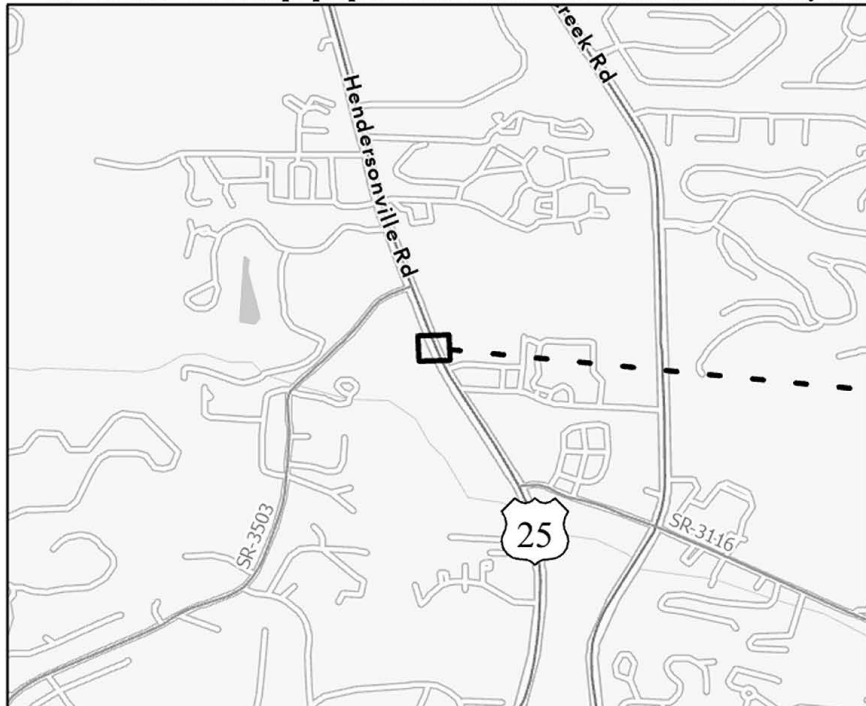


Major Route	Minor Route	Ramp #	Latitude	Longitude
US-25 (Hendersonville Rd)	Publix	33A	35.504762	-82.524381
US-25 (Hendersonville Rd)	Publix	35A	35.504593	-82.524315

Division	County	Municipality	Ramp ID	Latitude	Longitude	ASPHALT PLANT MIX, PAVEMENT REPAIR (TONS)	REMOVE AND REPLACE CURB RAMPS (EA)	THERMOPLASTIC PAVEMENT MARKING LINES (24", 90 MILS) (LF)	REMOVAL OF PAVEMENT MARKING LINES (8") (LF)	NOTES
13	Buncombe	Asheville	33A	35.50476205	-82.5243813	1	1	84	60	
			35A	35.50459316	-82.52431537		1			
						1	2	84	60	

*The above space is reserved for project quantities.

*One or more curb ramps proposed for construction within this sheet may fall within or may be adjacent to nearby NC HPO Historic Districts



- ▲ ADA Curb Ramp, Construct (Brick)
- ▲ ADA Curb Ramp, Construct (New)
- ▲ ADA Curb Ramp, Remove
- △ ADA Curb Ramp, Replace Truncated Domes
- △ ADA Curb Ramp, Upgrade

Contract# DM00511
R-5793KB Upgrades/Installation
WBS# 44923.3.23
FA# 4492312
Sheet 30



▨ NC HPO Historic Districts

Major Route	Minor Route	Ramp #	Latitude	Longitude
US-25 (Hendersonville Rd)	Home Trust Bank	68A	35.504044	-82.52446
US-25 (Hendersonville Rd)	Typhoon Noodles	36A	35.503771	-82.524026
US-25 (Hendersonville Rd)	Ingles	67A	35.503703	-82.524271
US-25 (Hendersonville Rd)	Business Park	38A	35.503642	-82.523983
US-25 (Hendersonville Rd)	Ingles	65A	35.50356	-82.5242

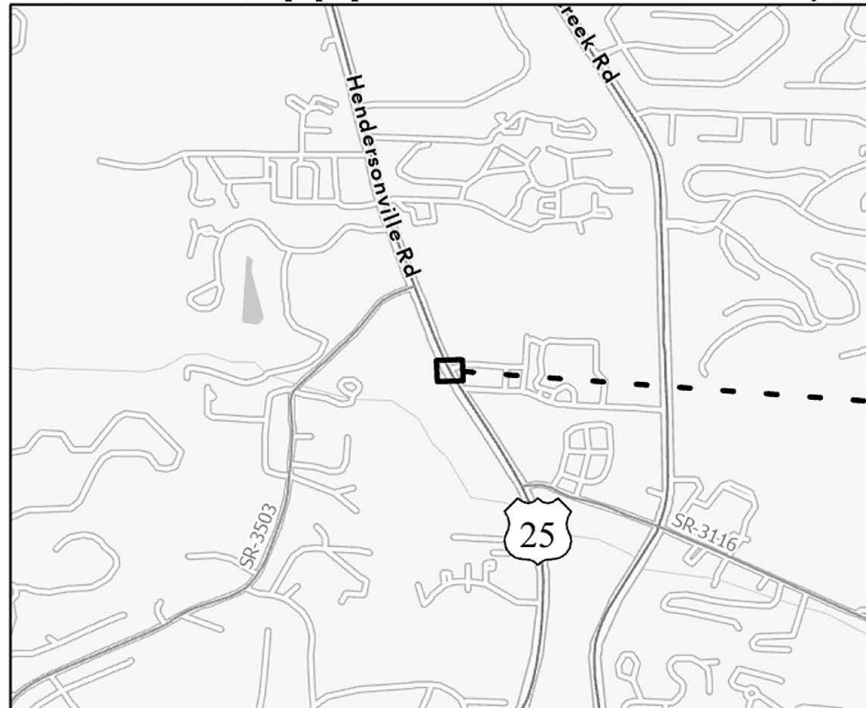
Credits: Buncombe County, NC, State of North Carolina DOT, Esri, TomTom, Garmin, SafeGraph, GeoTechnologies, Inc, METI, NASA, USGS, EPA, NPS, US Census Bureau, USDA, USFWS. Current NCCGLA Orthomagey for NC in B&W. Intersection coordinates locations provided by NCDOT Division 13 staff. nblarvey@ncdot.gov 8/9/2024

General Location 0 0.25 0.5 Miles

Division	County	Municipality	Ramp ID	Latitude	Longitude	ASPHALT PLANT MIX, PAVEMENT REPAIR (TONS)	2'-6" CONCRETE CURB & GUTTER (LF)	REMOVE AND REPLACE CURB RAMPS (EA)	REMOVE AND REPLACE 4" CONCRETE SIDEWALK (SY)	REMOVE AND REPLACE 2'-6" CURB & GUTTER (LF)	THERMOPLASTIC PAVEMENT MARKING LINES (24", 90 MILS) (LF)	REMOVAL OF PAVEMENT MARKING LINES (4") (LF)	REMOVAL OF PAVEMENT MARKING LINES (8") (LF)	REMOVAL OF PAVEMENT MARKING LINES (24") (LF)	TYPE I POST W/ FOUNDATION (EA)	NOTES
13	Buncombe	Asheville	36A	35.50377058	-82.52402636	4	10	1	5	10	215	20	45	180	1	
			38A	35.50364233	-82.5239831			1		20						
			65A	35.50355976	-82.52419978			1		5						
			67A	35.50370347	-82.52427124			1		10						
			68A	35.50404357	-82.5244595			1								

*The above space is reserved for project quantities.

*One or more curb ramps proposed for construction within this sheet may fall within or may be adjacent to nearby NC HPO Historic Districts



Credits: Buncombe County, NC, State of North Carolina DOT, Esri, TomTom, Garmin, SafeGraph, GeoTechnologies, Inc, METI, NASA, USGS, EPA, NPS, US Census Bureau, USDA, USFWS. Current NCCGLA Orthomagey for NC in B&W. Intersection coordinates locations provided by NCDOT Division 13 staff. nblarvey@ncdot.gov 8/9/2024

General Location 0 0.25 0.5 Miles



1" = 50'

- ▲ ADA Curb Ramp, Construct (Brick)
- ▲ ADA Curb Ramp, Construct (New)
- ▲ ADA Curb Ramp, Remove
- △ ADA Curb Ramp, Replace Truncated Domes
- △ ADA Curb Ramp, Upgrade

▨ NC HPO Historic Districts

Contract# DM00511
R-5793KB Upgrades/Installation
WBS# 44923.3.23
FA# 4492312
Sheet 31

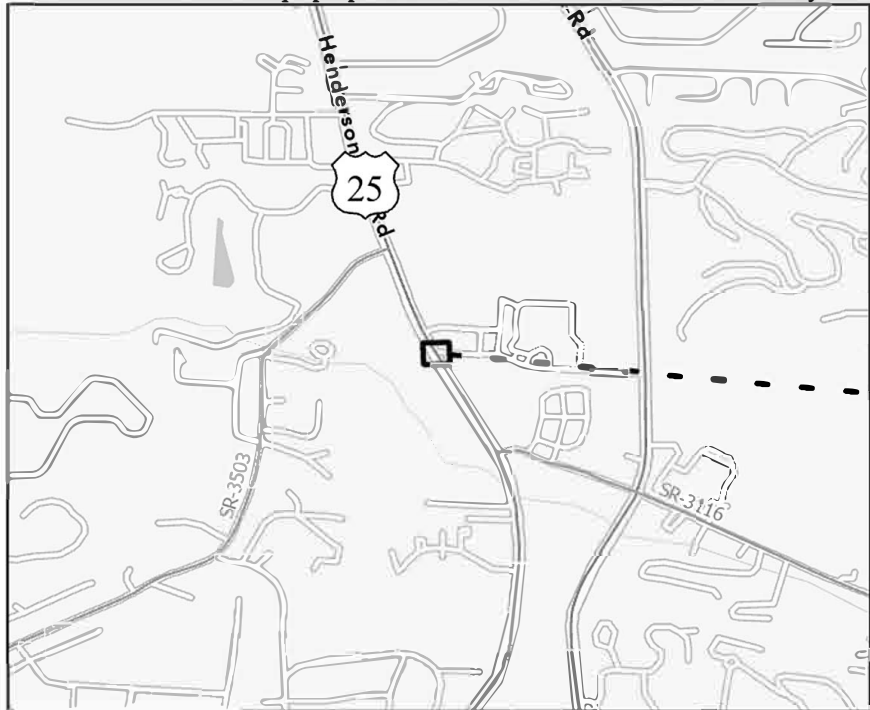


Major Route	Minor Route	Ramp #	Latitude	Longitude
US-25 (Hendersonville Rd)	Gala Drive (Pvt)	39A	35.503308	-82.523795
US-25 (Hendersonville Rd)	Gala Drive (Pvt)	41A	35.503255	-82.523772
US-25 (Hendersonville Rd)	Gala Drive (Pvt)	42A	35.503218	-82.523754
US-25 (Hendersonville Rd)	Gala Drive (Pvt)	44A	35.503175	-82.523725
US-25 (Hendersonville Rd)	Mercy Urgent Care	64A	35.503018	-82.523933

Division	County	Municipality	Ramp ID	Latitude	Longitude	ASPHALT PLANT MIX, PAVEMENT REPAIR (TONS)	REMOVE AND REPLACE CURB RAMPS (EA)	REMOVE AND REPLACE 4" CONCRETE SIDEWALK (SY)	REMOVE AND REPLACE 2'-6" CURB & GUTTER (LF)	ADJUSTMENT OF METER BOXES OR VALVE BOXES (EA)	THERMOPLASTIC PAVEMENT MARKING LINES (24", 90 MILS) (LF)	REMOVAL OF PAVEMENT MARKING LINES (4") (LF)	NOTES
13	Buncombe	Asheville	39A	35.50330839	-82.52379457	2	1	5			30	25	
			41A	35.50325513	-82.52377161		1						
			42A	35.50321849	-82.52375421		1		30	25			
			44A	35.50317464	-82.5237249		1	10	10	1			
			64A	35.50301824	-82.52393342		1						
						2	5	15	10	1	60	50	

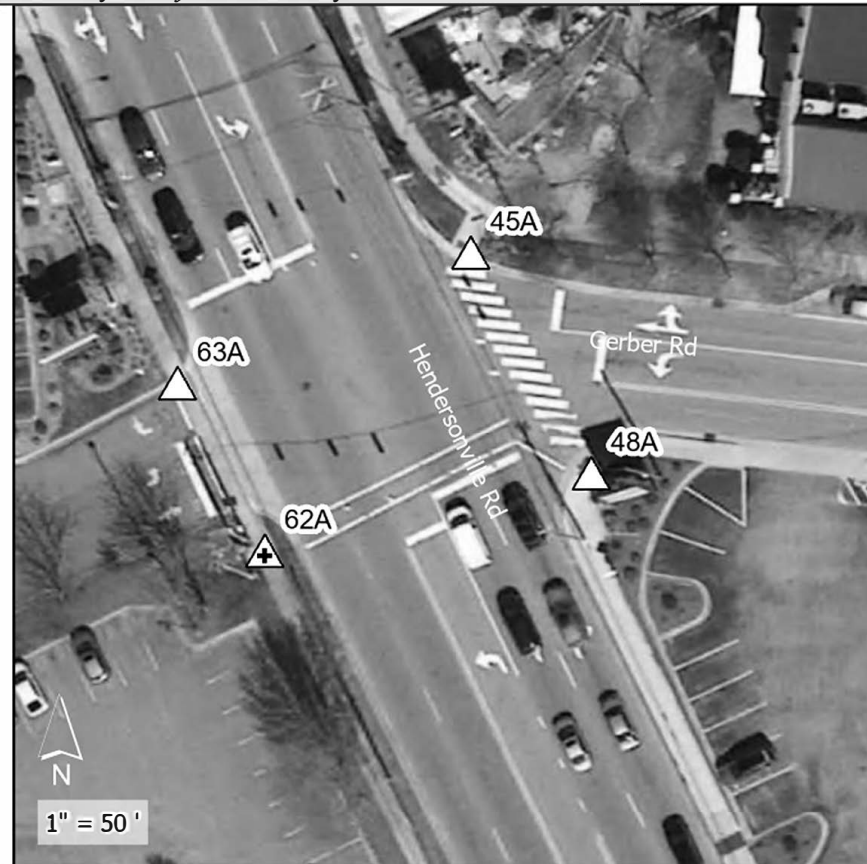
*The above space is reserved for project quantities.

*One or more curb ramps proposed for construction within this sheet may fall within or may be adjacent to nearby NC HPO Historic Districts



Credits: Buncombe County, NC, State of North Carolina DOT, Esri, TomTom, Garmin, SafeGraph, GeoTechnologies, Inc, METI, NASA, USGS, EPA, NPS, US Census Bureau, USDA, USFWS. Current NCCGLA Orthomagey for NC in B&W. Intersection coordinates locations provided by NCDOT Division 13 staff. nblharvey@ncdot.gov 8/9/2024

General Location 0 0.25 0.5 Miles



1" = 50'

- ▲ ADA Curb Ramp, Construct (Brick)
- ▲ ADA Curb Ramp, Construct (New)
- ▲ ADA Curb Ramp, Remove
- △ ADA Curb Ramp, Replace Truncated Domes
- △ ADA Curb Ramp, Upgrade

▨ NC HPO Historic Districts

Contract# DM00511
R-5793KB Upgrades/Installation
WBS# 44923.3.23
FA# 4492312
Sheet 32



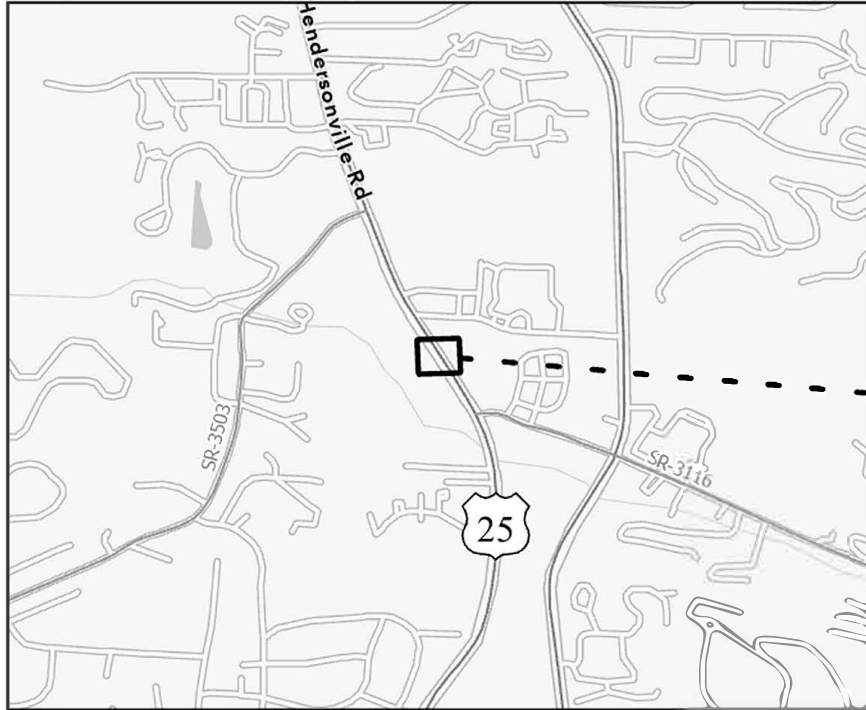
Major Route	Minor Route	Ramp #	Latitude	Longitude
US-25 (Hendersonville Rd)	Gerber Rd (Pvt)	45A	35.502735	-82.52346
US-25 (Hendersonville Rd)	Walgreens	63A	35.502635	-82.523712
US-25 (Hendersonville Rd)	Gerber Rd (Pvt)	48A	35.502581	-82.523348
US-25 (Hendersonville Rd)	Walgreens	62A	35.502517	-82.52363

Division	County	Municipality	Ramp ID	Latitude	Longitude	ASPHALT PLANT MIX, PAVEMENT REPAIR (TONS)	CONCRETE CURB RAMPS (EA)	REMOVE AND REPLACE CURB RAMPS (EA)	REMOVE CONCRETE SIDEWALK (SY)	REMOVE AND REPLACE 4" CONCRETE SIDEWALK (SY)	REMOVE CURB & GUTTER (LF)	ADJUSTMENT OF METER BOXES OR VALVE BOXES (EA)	THERMOPLASTIC PAVEMENT MARKING LINES (24", 90 MILS) (LF)	REMOVAL OF PAVEMENT MARKING LINES (4") (LF)	REMOVAL OF PAVEMENT MARKING LINES (8") (LF)	REMOVAL OF PAVEMENT MARKING LINES (24") (LF)	PEDESTRIAN SIGNAL HEAD (16", 1 SECTION W/ COUNTDOWN) (EA)	SIGNAL CABLE (LF)	LEAD-IN CABLE (14-2) (LF)	TYPE II PEDESTAL W/ FOUNDATION (EA)	NOTES			
13	Buncombe	Asheville	45A	35.50273541	-82.52345963	3		1		5			87			84						UPDATE EXISTING HI-VISIBILITY CROSSWALK ACROSS GERBER RD 45A TO 48A		
			48A	35.50258086	-82.52334754			1				1		148	100	150	38	1	250	250	1	INSTALL HI-VISIBILITY CROSSWALK ACROSS US-25 48A TO 62A		
			62A	35.50248324	-82.52360982				1		5		15											
			63A	35.5026348	-82.52371175					1														
						3	1	3	5	5	15	1	235	100	150	122	1	250	250	1				

*COORDINATE WITH NCDOT DIVISION 13 TRAFFIC SERVICES PRIOR TO BEGINNING WORK AT THIS INTERSECTION

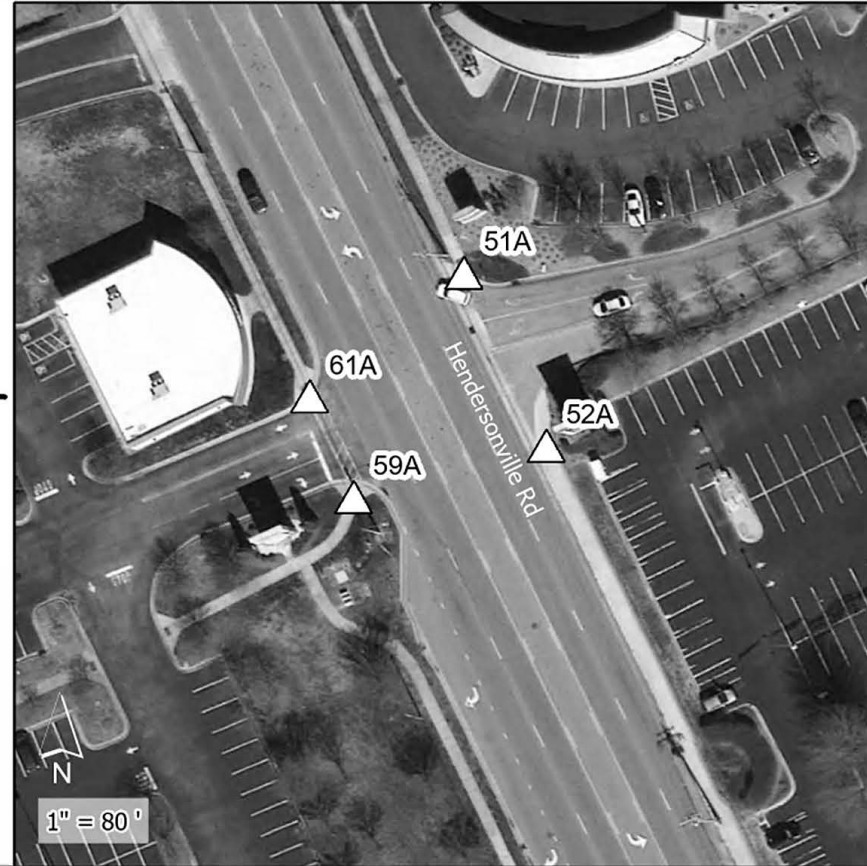
*The above space is reserved for project quantities.

*One or more curb ramps proposed for construction within this sheet may fall within or may be adjacent to nearby NC HPO Historic Districts



Credits: Buncombe County, NC, State of North Carolina DOT, Esri, TomTom, Garmin, SafeGraph, GeoTechnologies, Inc., METI, NASA, USGS, EPA, NPS, US Census Bureau, USDA, USFWS. Current NCCGLA Orthomagey for NC in B&W. Intersection coordinates locations provided by NCDOT Division 13 staff. nblarvey@ncdot.gov 8/9/2024

General Location 0 0.25 0.5 Miles



1" = 80'

- ▲ ADA Curb Ramp, Construct (Brick)
- ▲ ADA Curb Ramp, Construct (New)
- ▲ ADA Curb Ramp, Remove
- △ ADA Curb Ramp, Replace Truncated Domes
- △ ADA Curb Ramp, Upgrade

▨ NC HPO Historic Districts

Contract# DM00511
R-5793KB Upgrades/Installation
WBS# 44923.3.23
FA# 4492312
Sheet 33

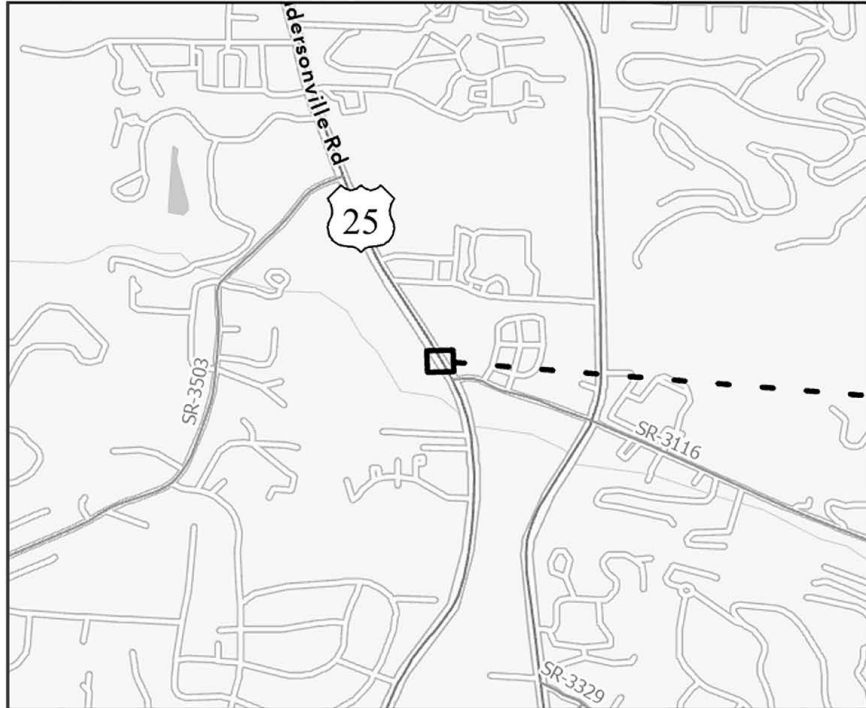


Major Route	Minor Route	Ramp #	Latitude	Longitude
US-25 (Hendersonville Rd)	Whole Foods Market	51A	35.501649	-82.522766
US-25 (Hendersonville Rd)	Ingles	61A	35.501501	-82.522975
US-25 (Hendersonville Rd)	Whole Foods Market	52A	35.501454	-82.522642
US-25 (Hendersonville Rd)	Ingles	59A	35.501388	-82.522909

Division	County	Municipality	Ramp ID	Latitude	Longitude	ASPHALT PLANT MIX, PAVEMENT REPAIR (TONS)	REMOVE AND REPLACE CURB RAMPS (EA)	REMOVE AND REPLACE 4" CONCRETE SIDEWALK (SY)	REMOVE AND REPLACE 2'-6" CURB & GUTTER (LF)	THERMOPLASTIC PAVEMENT MARKING LINES (24", 90 MILS) (LF)	REMOVAL OF PAVEMENT MARKING LINES (4") (LF)	NOTES
13	Buncombe	Asheville	51A	35.50164866	-82.52276584	2	1					
			52A	35.50145432	-82.52264205		1	8	15			
			59A	35.5013878	-82.52290892			5		60	133	
			61A	35.50150122	-82.52297532		1					
						2	3	13	15	60	133	

*The above space is reserved for project quantities.

*One or more curb ramps proposed for construction within this sheet may fall within or may be adjacent to nearby NC HPO Historic Districts



Credits: Buncombe County, NC, State of North Carolina DOT, Esri, TomTom, Garmin, SafeGraph, GeoTechnologies, Inc., METI, NASA, USGS, EPA, NPS, US Census Bureau, USDA, USFWS. Current NCCGLA Orthomagey for NC in B&W. Intersection coordinates locations provided by NCDOT Division 13 staff. nblarvey@ncdot.gov 8/9/2024

General Location 0 0.25 0.5 Miles



- ADA Curb Ramp, Construct (Brick)
- ADA Curb Ramp, Construct (New)
- ADA Curb Ramp, Remove
- ADA Curb Ramp, Replace Truncated Domes
- ADA Curb Ramp, Upgrade

NC HPO Historic Districts

Contract# DM00511
R-5793KB Upgrades/Installation
WBS# 44923.3.23
FA# 4492312
Sheet 34



Major Route	Minor Route	Ramp #	Latitude	Longitude
US-25 (Hendersonville Rd)	Ingles	57A	35.500356	-82.522287
US-25 (Hendersonville Rd)	Whole Foods Market	53A	35.500258	-82.521854

Division	County	Municipality	Ramp ID	Latitude	Longitude	ASPHALT PLANT MIX, PAVEMENT REPAIR (TONS)	REMOVE AND REPLACE CURB RAMPS (EA)	REMOVE AND REPLACE 2'-6" CURB & GUTTER (LF)	THERMOPLASTIC PAVEMENT MARKING LINES (24", 90 MILS) (LF)	REMOVAL OF PAVEMENT MARKING LINES (8") (LF)	NOTES
13	Buncombe	Asheville	53A	35.50025788	-82.52185384	2	1	10	50	73	
			57A	35.50035631	-82.52228692		1				
						2	2	10	50	73	

*The above space is reserved for project quantities.

*One or more curb ramps proposed for construction within this sheet may fall within or may be adjacent to nearby NC HPO Historic Districts



Credits: Buncombe County, NC, State of North Carolina DOT, Esri, TomTom, Garmin, SafeGraph, GeoTechnologies, Inc, METI, NASA, USGS, EPA, NPS, US Census Bureau, USDA, USFWS. Current NCCGLA Orthomagey for NC in B&W. Intersection coordinates locations provided by NCDOT Division 13 staff nblarvey@ncdot.gov 8/9/2024

General Location 0 0.25 0.5 Miles



- ▲ ADA Curb Ramp, Construct (Brick)
- ▲ ADA Curb Ramp, Construct (New)
- ▲ ADA Curb Ramp, Remove
- ▲ ADA Curb Ramp, Replace Truncated Domes
- ▲ ADA Curb Ramp, Upgrade

▨ NC HPO Historic Districts

Contract# DM00511
R-5793KB Upgrades/Installation
WBS# 44923.3.23
FA# 4492312
Sheet 35

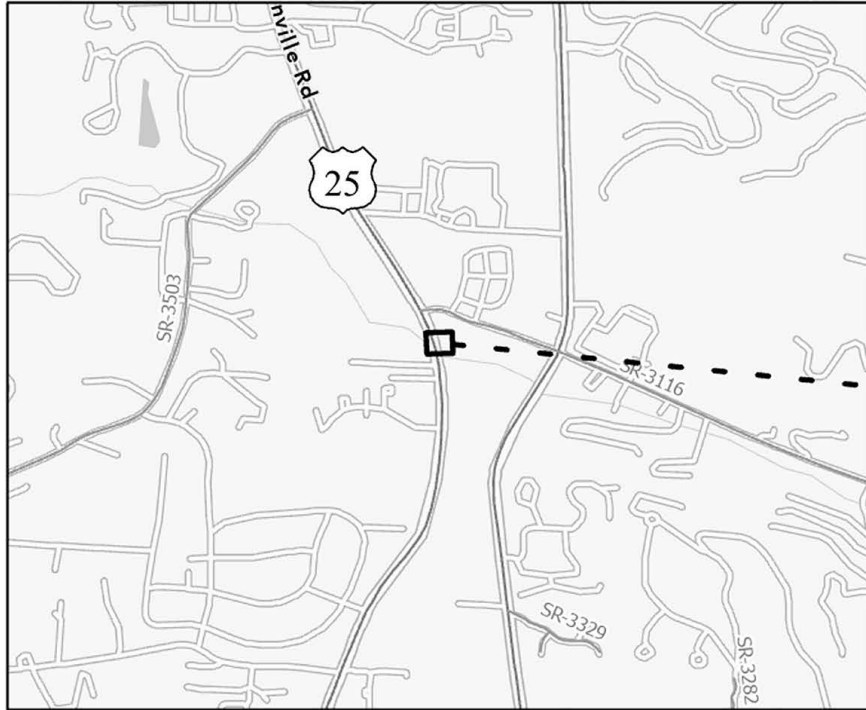


Major Route	Minor Route	Ramp #	Latitude	Longitude
US-25 (Hendersonville Rd)	Ace Hardware	75A	35.499489	-82.521445
US-25 (Hendersonville Rd)	Ace Hardware	74A	35.499355	-82.5214
US-25 (Hendersonville Rd)	First Bank	70A	35.499332	-82.521637

Division	County	Municipality	Ramp ID	Latitude	Longitude	ASPHALT PLANT MIX, PAVEMENT REPAIR (TONS)	2'-6" CONCRETE CURB & GUTTER (LF)	4" CONCRETE SIDEWALK (SY)	REMOVE AND REPLACE CURB RAMPS (EA)	REMOVE CONCRETE CURB RAMPS (EA)	NOTES	
13	Buncombe	Asheville	70A	35.49933152	-82.52163748		5	5		1		
			74A	35.49935528	-82.52139996	1			1			
			75A	35.49948912	-82.52144519				1			
						1	5	5	2	1		

*The above space is reserved for project quantities.

*One or more curb ramps proposed for construction within this sheet may fall within or may be adjacent to nearby NC HPO Historic Districts



Credits: Buncombe County, NC, State of North Carolina DOT, Esri, TomTom, Garmin, SafeGraph, GeoTechnologies, Inc. METI, NASA, USGS, EPA, NPS, US Census Bureau, USDA, USFWS. Current NCCGLA Orthomagey for NC in B&W. Intersection coordinates locations provided by NCDOT Division 13 staff nblarvey@ncdot.gov 8/9/2024

General Location 0 0.25 0.5 Miles



- ▲ ADA Curb Ramp, Construct (Brick)
- ▲ ADA Curb Ramp, Construct (New)
- ▲ ADA Curb Ramp, Remove
- △ ADA Curb Ramp, Replace Truncated Domes
- △ ADA Curb Ramp, Upgrade

▨ NC HPO Historic Districts

Contract# DM00511
R-5793KB Upgrades/Installation
WBS# 44923.3.23
FA# 4492312
Sheet 36

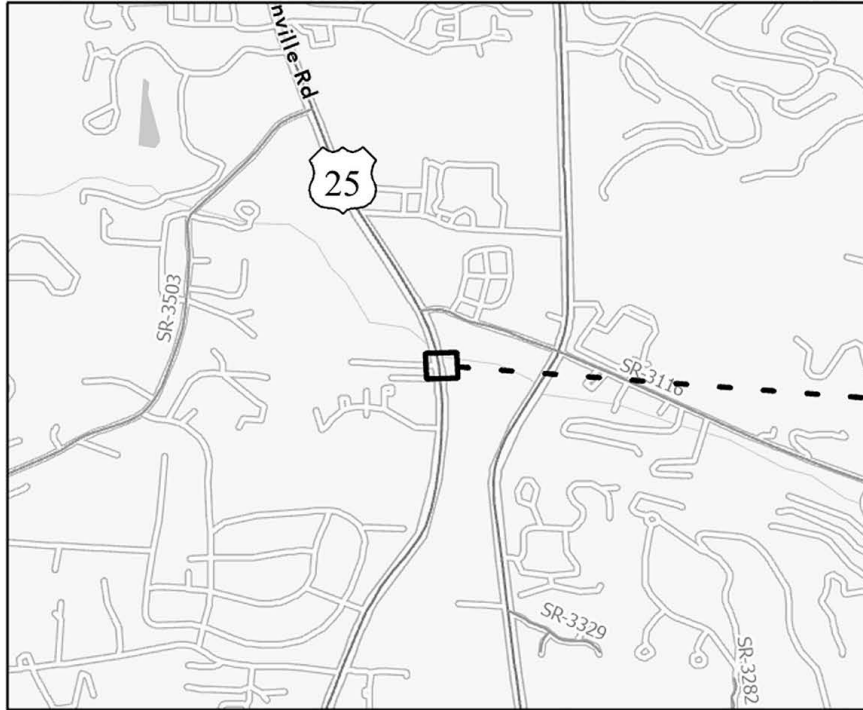


Major Route	Minor Route	Ramp #	Latitude	Longitude
US-25 (Hendersonville Rd)	TD Bank	84A	35.498929	-82.521233
US-25 (Hendersonville Rd)	TD Bank	73A	35.498796	-82.521192

Division	County	Municipality	Ramp ID	Latitude	Longitude	ASPHALT PAVEMENT REPAIR (TONS)	2'-6" CONCRETE CURB & GUTTER (LF)	4" CONCRETE SIDEWALK (SY)	REMOVE AND REPLACE CURB RAMPS (EA)	NOTES
13	Buncombe	Asheville	73A	35.49879604	-82.52119246	1	5	5	1	
			84A	35.49892856	-82.5212333		5	5	2	

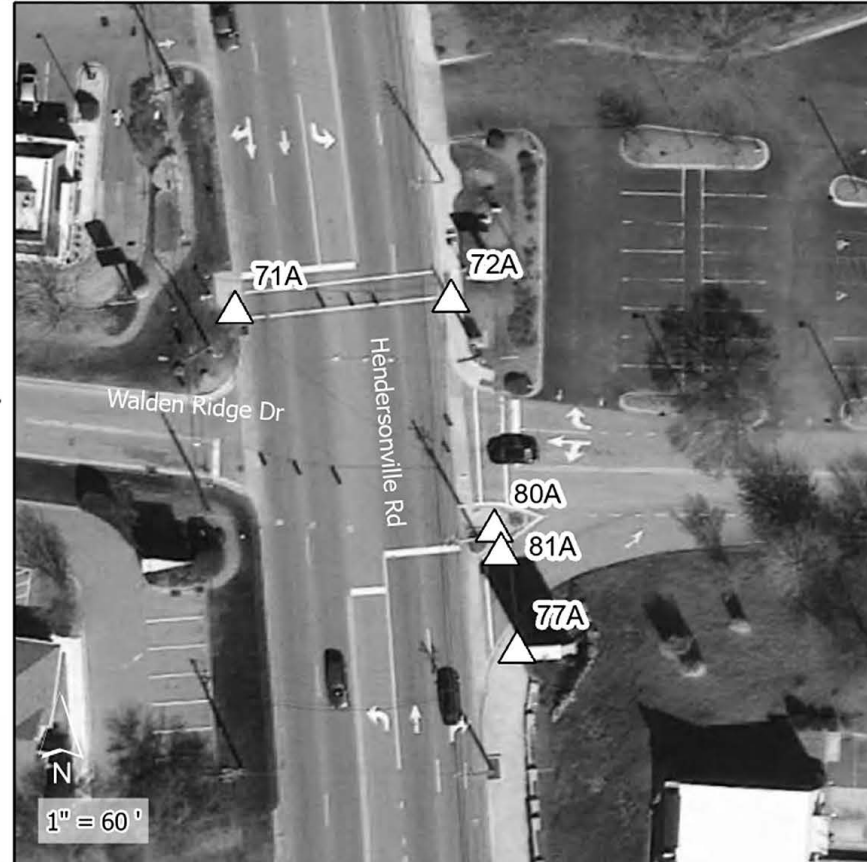
*The above space is reserved for project quantities.

*One or more curb ramps proposed for construction within this sheet may fall within or may be adjacent to nearby NC HPO Historic Districts



Credits: Buncombe County, NC, State of North Carolina DOT, Esri, TomTom, Garmin, SafeGraph, GeoTechnologies, Inc. METI, NASA, USGS, EPA, NPS, US Census Bureau, USDA, USFWS. Current NCCGLA Orthomagey for NC in B&W. Intersection coordinates locations provided by NCDOT Division 13 staff. nblarvey@ncdot.gov 8/9/2024

General Location 0 0.25 0.5 Miles



- ▲ ADA Curb Ramp, Construct (Brick)
- ▲ ADA Curb Ramp, Construct (New)
- ▲ ADA Curb Ramp, Remove
- △ ADA Curb Ramp, Replace Truncated Domes
- △ ADA Curb Ramp, Upgrade

▨ NC HPO Historic Districts

Contract# DM00511
R-5793KB Upgrades/Installation
WBS# 44923.3.23
FA# 4492312
Sheet 37

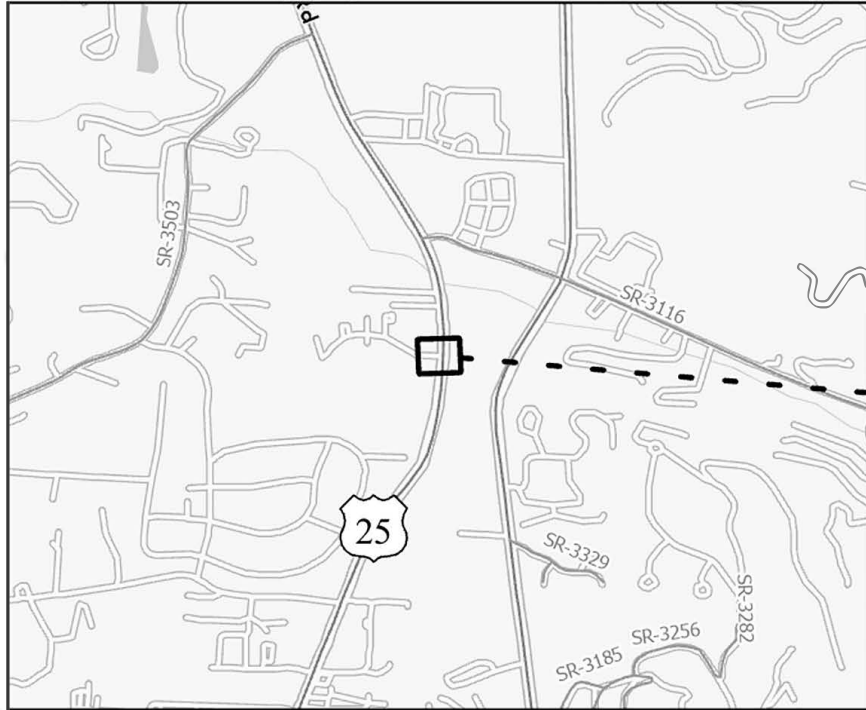


Major Route	Minor Route	Ramp #	Latitude	Longitude
US-25 (Hendersonville Rd)	Bank of America	72A	35.498331	-82.521117
US-25 (Hendersonville Rd)	Taco Bell	71A	35.498315	-82.521343
US-25 (Hendersonville Rd)	Small Business Park	80A	35.498135	-82.521063
US-25 (Hendersonville Rd)	Small Business Park	81A	35.498116	-82.521055
US-25 (Hendersonville Rd)	Small Business Park	77A	35.498032	-82.521034

Division	County	Municipality	Ramp ID	Latitude	Longitude	ASPHALT PLANT MIX, PAVEMENT REPAIR (TONS)	2'-6" CONCRETE CURB & GUTTER (LF)	4" CONCRETE SIDEWALK (SY)	RETROFIT EXISTING CONCRETE CURB RAMPS (EA)	REMOVE AND REPLACE CURB RAMPS (EA)	THERMOPLASTIC PAVEMENT MARKING LINES (24", 90 MILS) (LF)	REMOVAL OF PAVEMENT MARKING LINES (8") (LF)	NOTES		
13	Buncombe	Asheville	71A	35.4983149	-82.52134312					1	90	120	INSTALL HI-VISIBILITY CROSSWALK ACROSS US-25 71A TO 72A		
			72A	35.49833121	-82.52111699				1						
			77A	35.49803228	-82.5210345	2	10	10			1				
			80A	35.49813546	-82.52106289										
			81A	35.49811569	-82.52105515										
						2	10	10	1	2	90	120			

*The above space is reserved for project quantities.

*One or more curb ramps proposed for construction within this sheet may fall within or may be adjacent to nearby NC HPO Historic Districts



Credits: Buncombe County, NC, State of North Carolina DOT, Esri, TomTom, Garmin, SafeGraph, GeoTechnologies, Inc, METI, NASA, USGS, EPA, NPS, US Census Bureau, USDA, USFWS. Current NCCGLA Orthomagey for NC in B&W. Intersection coordinates locations provided by NCDOT Division 13 staff nblarvey@ncdot.gov 8/9/2024

General Location 0 0.25 0.5 Miles



1" = 80'

- ADA Curb Ramp, Construct (Brick)
- ADA Curb Ramp, Construct (New)
- ADA Curb Ramp, Remove
- ADA Curb Ramp, Replace Truncated Domes
- ADA Curb Ramp, Upgrade

NC HPO Historic Districts

Contract# DM00511
R-5793KB Upgrades/Installation
WBS# 44923.3.23
FA# 4492312
Sheet 38

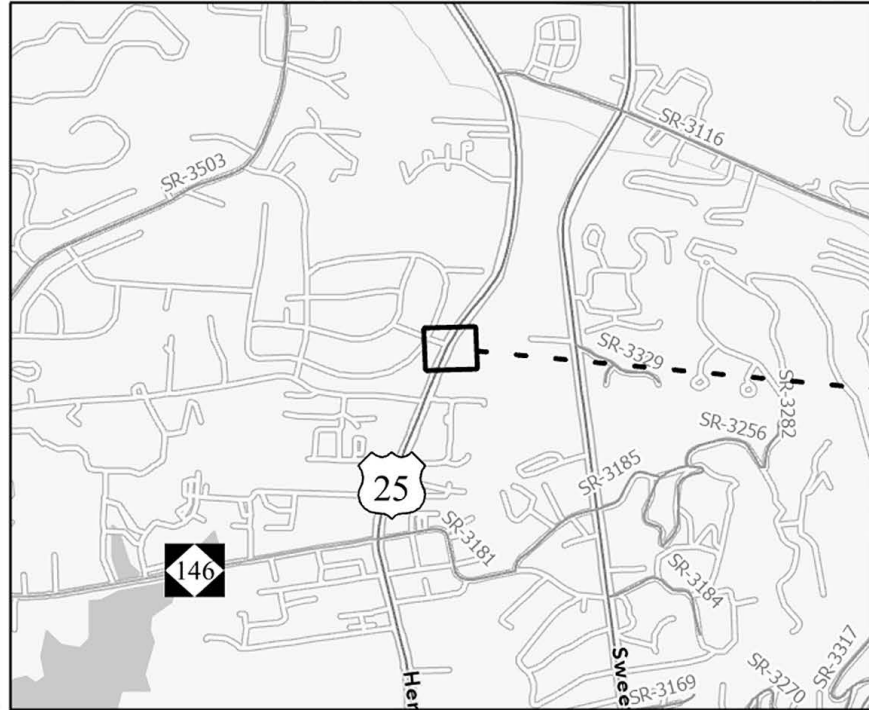


Major Route	Minor Route	Ramp #	Latitude	Longitude
US-25 (Hendersonville Rd)	Davis Grey Drive	83A	35.4965	-82.521236
US-25 (Hendersonville Rd)	Davis Grey Drive (Pvt)	82A	35.496322	-82.521249

Division	County	Municipality	Ramp ID	Latitude	Longitude	ASPHALT PLANT MIX, PAVEMENT REPAIR (TONS)	2'-6" CONCRETE CURB & GUTTER (LF)	REMOVE CONCRETE CURB RAMPS (EA)	NOTES
13	Buncombe	Asheville	82A	35.49632207	-82.52124921	1	20	1	
			83A	35.49650019	-82.52123556		19	1	
						1	39	2	

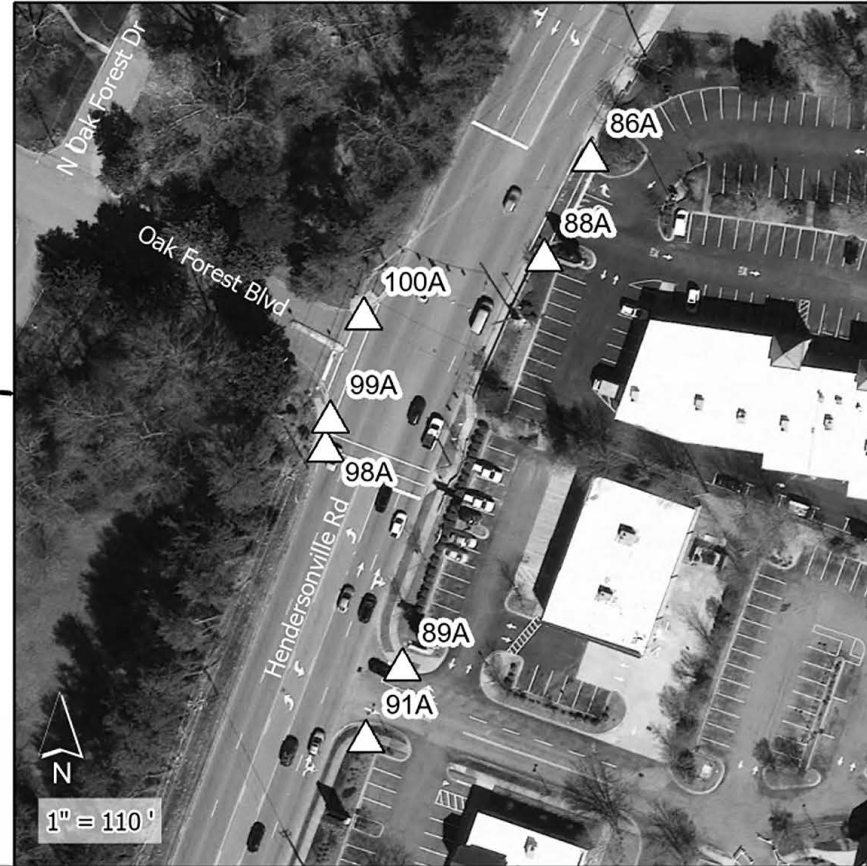
*The above space is reserved for project quantities.

*One or more curb ramps proposed for construction within this sheet may fall within or may be adjacent to nearby NC HPO Historic Districts



Credits: Buncombe County, NC, State of North Carolina DOT, Esri, TomTom, Garmin, SafeGraph, GeoTechnologies, Inc. METI, NASA, USGS, EPA, NPS, US Census Bureau, USDA, USFWS. Current NCCGLA Orthomagey for NC in B&W. Intersection coordinates locations provided by NCDOT Division 13 staff. nblarvey@ncdot.gov 8/9/2024

General Location 0 0.25 0.5 Miles



- ▲ ADA Curb Ramp, Construct (Brick)
- ▲ ADA Curb Ramp, Construct (New)
- ▲ ADA Curb Ramp, Remove
- △ ADA Curb Ramp, Replace Truncated Domes
- △ ADA Curb Ramp, Upgrade

▨ NC HPO Historic Districts

Contract# DM00511
R-5793KB Upgrades/Installation
WBS# 44923.3.23
FA# 4492312
Sheet 39

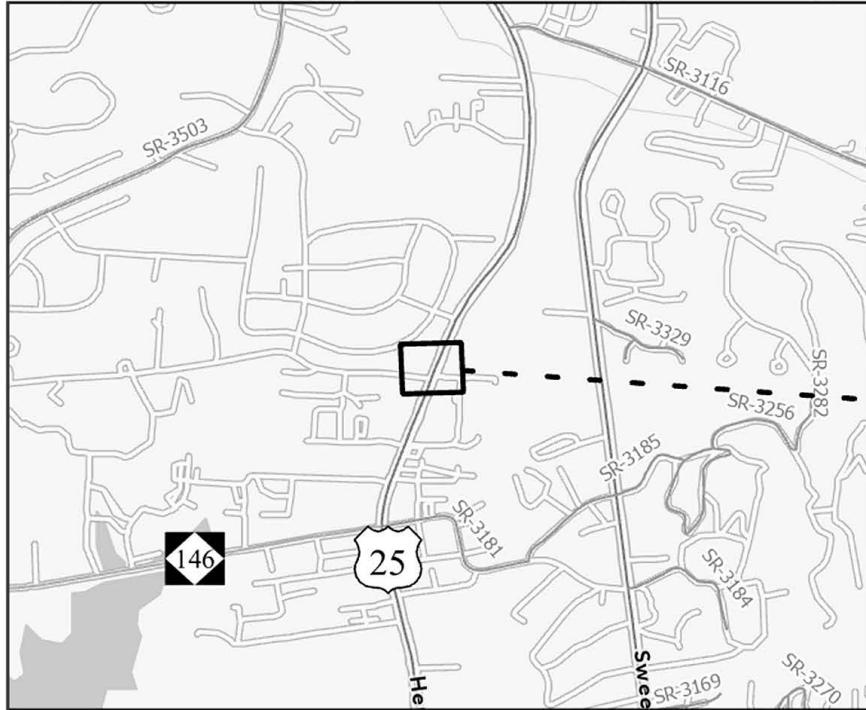


Major Route	Minor Route	Ramp #	Latitude	Longitude
US-25 (Hendersonville Rd)	Small Business Park	86A	35.491465	-82.522947
US-25 (Hendersonville Rd)	Small Business Park	88A	35.491306	-82.523029
US-25 (Hendersonville Rd)	Oak Forest Blvd (Pvt)	100A	35.491204	-82.523372
US-25 (Hendersonville Rd)	Oak Forest Blvd (Pvt)	99A	35.491039	-82.52343
US-25 (Hendersonville Rd)	Oak Forest Blvd (Pvt)	98A	35.490994	-82.523437
US-25 (Hendersonville Rd)	AutoZone Auto Parts	89A	35.490654	-82.523274
US-25 (Hendersonville Rd)	Pulliam Properties	91A	35.490539	-82.52334

Division	County	Municipality	Ramp ID	Latitude	Longitude	ASPHALT PLANT MIX, PAVEMENT REPAIR (TONS)	REMOVE AND REPLACE CURB RAMPS (EA)	REMOVE AND REPLACE 4" CONCRETE SIDEWALK (SY)	REMOVE AND REPLACE 2'-6" CURB & GUTTER (LF)	ADJUSTMENT OF METER BOXES OR VALVE BOXES (EA)	THERMOPLASTIC PAVEMENT MARKING LINES (24", 90 MILS) (LF)	REMOVAL OF PAVEMENT MARKING LINES (8") (LF)	NOTES
13	Buncombe	Asheville	86A	35.49146499	-82.52294748	3	1	5	10		90	68	
			88A	35.49130563	-82.52302934		1	5	10				
			89A	35.49065409	-82.52327431		1	10	20	2			
			91A	35.49053934	-82.52333975		1	10	20				
			98A	35.49099373	-82.52343691		1				90	123	
			99A	35.49103944	-82.52342975		1						
			100A	35.49120363	-82.52337239		1				90	122	
						3	7	30	60	2	180	245	

*The above space is reserved for project quantities.

*One or more curb ramps proposed for construction within this sheet may fall within or may be adjacent to nearby NC HPO Historic Districts



Credits: Buncombe County, NC, State of North Carolina DOT, Esri, TomTom, Garmin, SafeGraph, GeoTechnologies, Inc. METI, NASA, USGS, EPA, NPS, US Census Bureau, USDA, USFWS. Current NCCGLA Orthomagey for NC in B&W. Intersection coordinates locations provided by NCDOT Division 13 staff. nblarvey@ncdot.gov 8/9/2024

General Location 0 0.25 0.5 Miles



- ADA Curb Ramp, Construct (Brick)
- ADA Curb Ramp, Construct (New)
- ADA Curb Ramp, Remove
- ADA Curb Ramp, Replace Truncated Domes
- ADA Curb Ramp, Upgrade

Contract# DM00511
R-5793KB Upgrades/Installation
WBS# 44923.3.23
FA# 4492312
Sheet 40



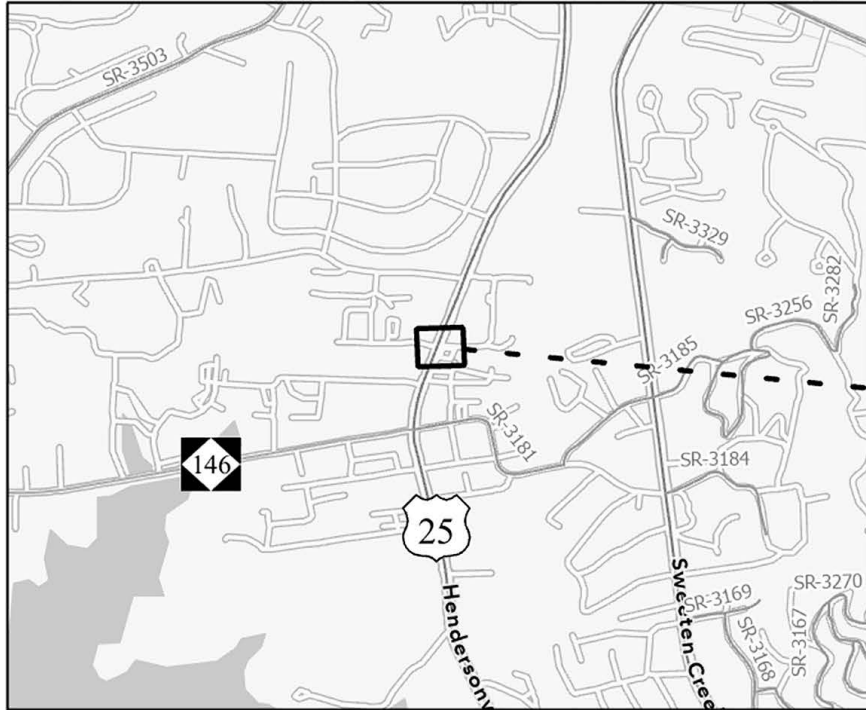
NC HPO Historic Districts

Major Route	Minor Route	Ramp #	Latitude	Longitude
US-25 (Hendersonville Rd)	Dunkin	97A	35.489973	-82.523856
US-25 (Hendersonville Rd)	Dunkin	96A	35.489899	-82.523888
US-25 (Hendersonville Rd)	Springside Rd (Pvt)	95A	35.489411	-82.52414
US-25 (Hendersonville Rd)	Herman Ave South (Pvt)	92A	35.489338	-82.523815
US-25 (Hendersonville Rd)	Springside Rd (Pvt)	93A	35.489255	-82.524165

Division	County	Municipality	Ramp ID	Latitude	Longitude	ASPHALT PLANT MIX, PAVEMENT REPAIR (TONS)	CONCRETE CURB RAMPS (EA)	REMOVE AND REPLACE CURB RAMPS (EA)	REMOVE AND REPLACE 4" CONCRETE SIDEWALK (SY)	REMOVE AND REPLACE 2'-6" CURB & GUTTER (LF)	REMOVE CONCRETE CURB RAMPS (EA)	THERMOPLASTIC PAVEMENT MARKING LINES (24", 90 MILS) (LF)	REMOVAL OF PAVEMENT MARKING LINES (8") (LF)	NOTES
13	Buncombe	Asheville	92A	35.48933839	-82.52381511	3		1	9			53	72	
			93A	35.48925478	-82.5241646		2			1	100	132		
			95A	35.48941141	-82.52414023			1	18	35	70	95		
			96A	35.48989873	-82.52388839			1						
			97A	35.48997338	-82.52385628			1						
						3	2	6	27	35	1	223	299	

*The above space is reserved for project quantities.

*One or more curb ramps proposed for construction within this sheet may fall within or may be adjacent to nearby NC HPO Historic Districts



Credits: Buncombe County, NC, State of North Carolina DOT, Esri, TomTom, Garmin, SafeGraph, GeoTechnologies, Inc. METI, NASA, USGS, EPA, NPS, US Census Bureau, USDA, USFWS. Current NCCGLA Orthomagey for NC in B&W. Intersection coordinates locations provided by NCDOT Division 13 staff. nblarvey@ncdot.gov 8/9/2024

General Location 0 0.25 0.5 Miles



- ▲ ADA Curb Ramp, Construct (Brick)
- ▲ ADA Curb Ramp, Construct (New)
- ▲ ADA Curb Ramp, Remove
- ▲ ADA Curb Ramp, Replace Truncated Domes
- ▲ ADA Curb Ramp, Upgrade

▨ NC HPO Historic Districts

Contract# DM00511
R-5793KB Upgrades/Installation
WBS# 44923.3.23
FA# 4492312
Sheet 41

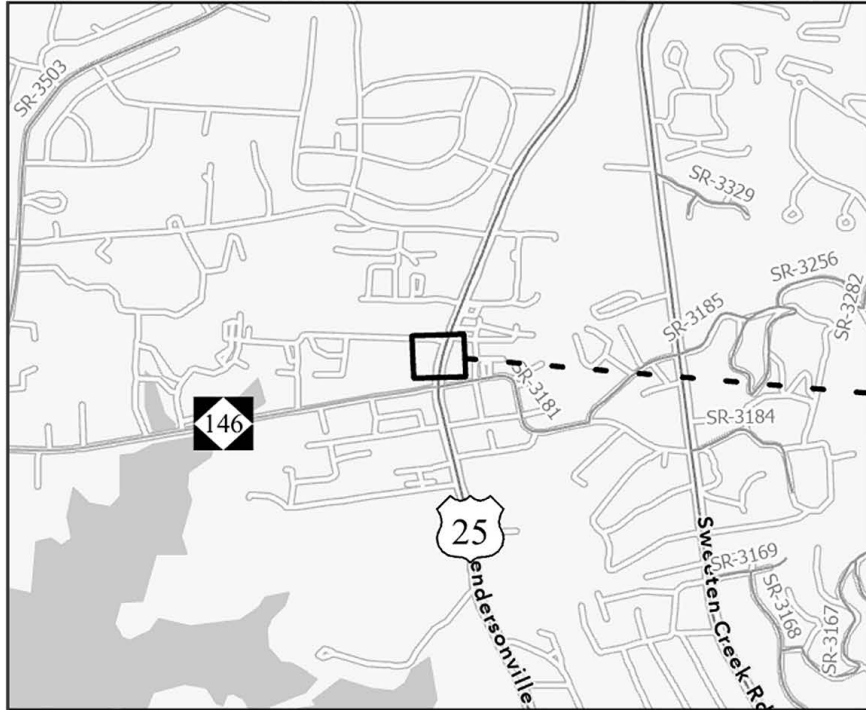


Major Route	Minor Route	Ramp #	Latitude	Longitude
US-25 (Hendersonville Rd)	Summit Ave (Pvt)	103A	35.487466	-82.524618
US-25 (Hendersonville Rd)	West Summit Ave (Pvt)	102A	35.48742	-82.524907
US-25 (Hendersonville Rd)	Summit Ave (Pvt)	104A	35.487271	-82.524705

Division	County	Municipality	Ramp ID	Latitude	Longitude	ASPHALT PLANT MIX, PAVEMENT REPAIR (TONS)	2'-6" CONCRETE CURB & GUTTER (LF)	4" CONCRETE SIDEWALK (SY)	REMOVE AND REPLACE CURB RAMPS (EA)	REMOVE AND REPLACE 4" CONCRETE SIDEWALK (SY)	REMOVE AND REPLACE 2'-6" CURB & GUTTER (LF)	REMOVE CONCRETE RAMPS (EA)	ADJUSTMENT OF METER BOXES OR VALVE BOXES (EA)	NOTES	
13	Buncombe	Asheville	102A	35.48742019	-82.52490703	2	20	5	1	5	10	1	1		
			103A	35.48746602	-82.52461811										
			104A	35.48727148	-82.52470479										
						2	20	5	2	5	10	1	1		

*The above space is reserved for project quantities.

*One or more curb ramps proposed for construction within this sheet may fall within or may be adjacent to nearby NC HPO Historic Districts



Credits: Buncombe County, NC, State of North Carolina DOT, Esri, TomTom, Garmin, SafeGraph, GeoTechnologies, Inc. METI, NASA, USGS, EPA, NPS, US Census Bureau, USDA, USFWS. Current NCCGLA Orthomagey for NC in B&W. Intersection coordinates locations provided by NCDOT Division 13 staff. nblarvey@ncdot.gov 8/9/2024



- ADA Curb Ramp, Construct (Brick)
- ADA Curb Ramp, Construct (New)
- ADA Curb Ramp, Remove
- ADA Curb Ramp, Replace Truncated Domes
- ADA Curb Ramp, Upgrade

NC HPO Historic Districts

Contract# DM00511
R-5793KB Upgrades/Installation
WBS# 44923.3.23
FA# 4492312
Sheet 42



Major Route	Minor Route	Ramp #	Latitude	Longitude
US-25 (Hendersonville Rd)	Heroes Car Wash	106A	35.486117	-82.525158
US-25 (Hendersonville Rd)	Heroes Car Wash	107A	35.485985	-82.525204
US-25 (Hendersonville Rd)	Skyland Cleaners	108A	35.485666	-82.525309
US-25 (Hendersonville Rd)	Skyland Cleaners	109A	35.485524	-82.52533
US-25 (Hendersonville Rd)	Advance Auto Parts	118A	35.485377	-82.525681

Division	County	Municipality	Ramp ID	Latitude	Longitude	ASPHALT PLANT MIX, PAVEMENT REPAIR (TONS)	REMOVE AND REPLACE CURB RAMPS (EA)	REMOVE AND REPLACE 4" CONCRETE SIDEWALK (SY)	REMOVE AND REPLACE 2'-6" CURB & GUTTER (LF)	NOTES
13	Buncombe	Asheville	106A	35.48611657	-82.52515786	2	1	5	5	
			107A	35.48598527	-82.52520387		1	5	5	
			108A	35.48566552	-82.52530923		1			
			109A	35.48552355	-82.52533012		1			
			118A	35.48537704	-82.52568077		1			
						2	5	10	10	

*The above space is reserved for project quantities.

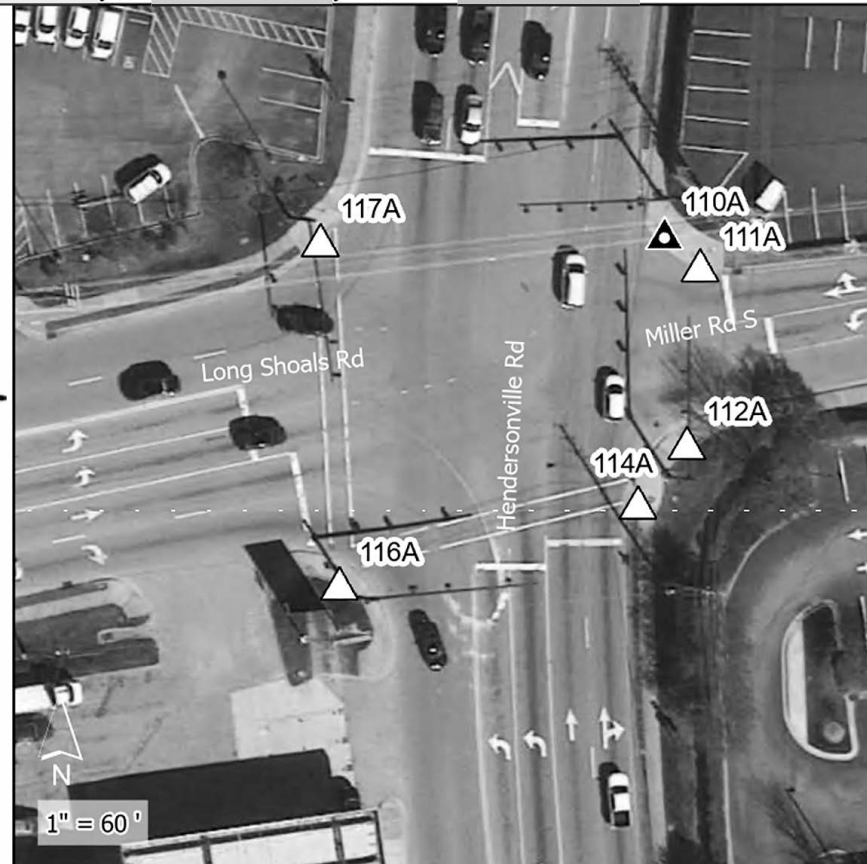
*One or more curb ramps proposed for construction within this sheet may fall within or may be adjacent to nearby NC HPO Historic Districts



Credits: Buncombe County, NC, State of North Carolina DOT, Esri, TomTom, Garmin, SafeGraph, GeoTechnologies, Inc. METI, NASA, USGS, EPA, NPS, US Census Bureau, USDA, USFWS. Current NCCGLA Orthomagey for NC in B&W. Intersection coordinates locations provided by NCDOT Division 13 staff. nbiarvey@ncdot.gov 8/9/2024

General Location

0 0.25 0.5 Miles



1" = 60'

- ADA Curb Ramp, Construct (Brick)
- ADA Curb Ramp, Construct (New)
- ADA Curb Ramp, Remove
- ADA Curb Ramp, Replace Truncated Domes
- ADA Curb Ramp, Upgrade

NC HPO Historic Districts

Contract# DM00511
R-5793KB Upgrades/Installation
WBS# 44923.3.23
FA# 4492312
Sheet 43



Major Route	Minor Route	Ramp #	Latitude	Longitude
US-25 (Hendersonville Rd)	SR-3181 (S Miller St)	110A	35.485046	-82.525376
US-25 (Hendersonville Rd)	NC-146 (Long Shoals Rd)	117A	35.485029	-82.525736
US-25 (Hendersonville Rd)	SR-3181 (S Miller St)	111A	35.485019	-82.525337
US-25 (Hendersonville Rd)	SR-3181 (S Miller St)	112A	35.484866	-82.525344
US-25 (Hendersonville Rd)	NC-146 (Long Shoals Rd)	114A	35.484814	-82.525393
US-25 (Hendersonville Rd)	NC-146 (Long Shoals Rd)	116A	35.484735	-82.525703

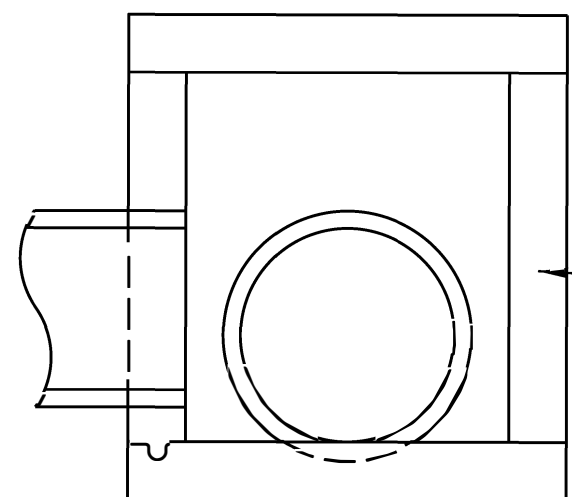
Division	County	Municipality	Ramp ID	Latitude	Longitude	ASPHALT PLANT MIX, PAVEMENT REPAIR (TONS)	2'-6" CONCRETE CURB & GUTTER (LF)	4" CONCRETE SIDEWALK (SY)	CONCRETE CURB RAMPS (EA)	REMOVE AND REPLACE CURB RAMPS (EA)	REMOVE CONCRETE SIDEWALK (SY)	REMOVE AND REPLACE 4" CONCRETE SIDEWALK (SY)	REMOVE AND REPLACE 2'-6" CURB & GUTTER (LF)	REMOVE CURB & GUTTER (LF)	REMOVE CONCRETE CURB RAMPS (EA)	ADJUSTMENT OF MANHOLES (EA)	ADJUSTMENT OF METER BOXES OR VALVE BOXES (EA)	THERMOPLASTIC PAVEMENT MARKING LINES (24", 90 MILS) (LF)	REMOVAL OF PAVEMENT MARKING LINES (4") (LF)	REMOVAL OF PAVEMENT MARKING LINES (8") (LF)	REMOVAL OF PAVEMENT MARKING LINES (24") (LF)	TYPE I POST W/ FOUNDATION (EA)	NOTES				
13	Buncombe	Asheville	110A	35.4850456	-82.52537554	3	26	35							1		1										
			111A	35.48501895	-82.52533701							1								72							
			112A	35.48486627	-82.52534421							1			5	10											
			114A	35.48481371	-82.52539324			15	5	1	1	5					10		1		132	40	180	48	1		
			116A	35.48473532	-82.52570317							1								1				195		1	
			117A	35.48502894	-82.52573578							1			5	10											
										3	41	40	1	5	5	10	20	10	1	1	2	351	40	375	48	2	

*COORDINATE WITH NCDOT DIVISION 13 TRAFFIC SERVICES PRIOR TO BEGINNING WORK AT THIS INTERSECTION

*The above space is reserved for project quantities.

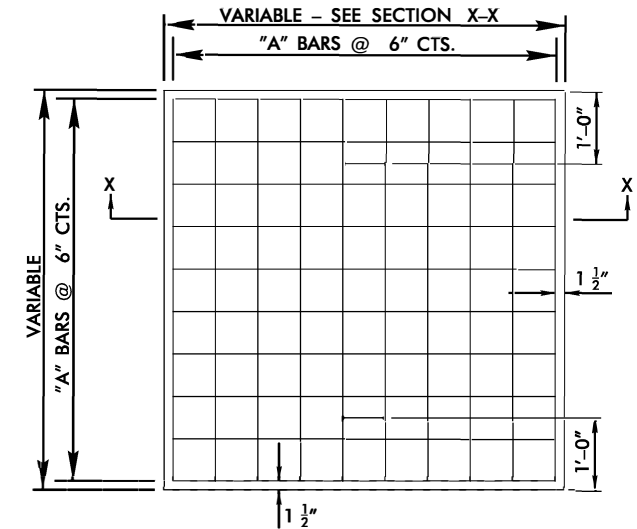
REVISIONS
 27-AUG-2024, 08:45
 S:\Projects\Eng\Roadway\5813D\Roadway\Fo\W-5813D.ddc_curb_ramp_detail.dgn

PROJECT REFERENCE NO.	SHEET NO.
R-5793KB	44
RW SHEET NO.	
ROADWAY DESIGN ENGINEER	HYDRAULICS ENGINEER
DOCUMENT NOT CONSIDERED FINAL UNLESS ALL SIGNATURES COMPLETED	

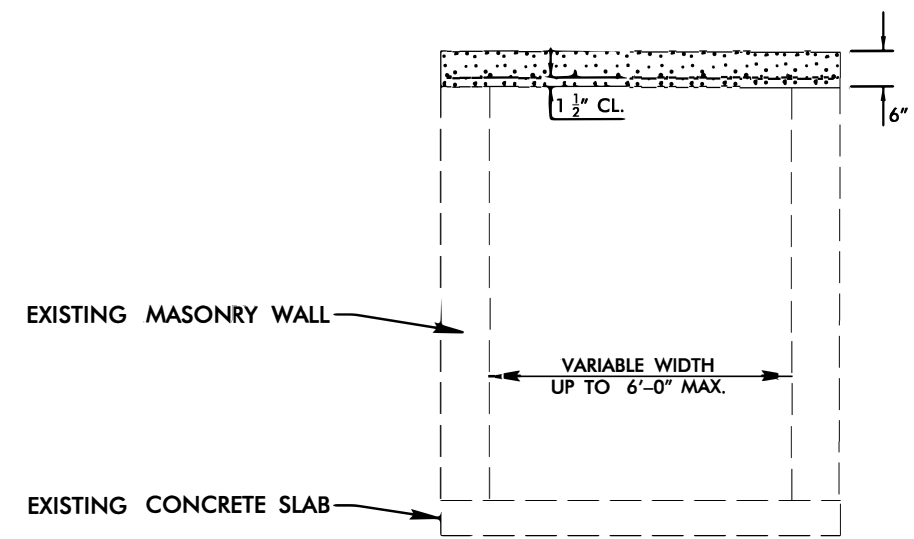


EXISTING DRAINAGE
STRUCTURE JUNCTION
BOX

CONVERT EXISTING
JB W/MANHOLE TO
JB W/O MANHOLE



PLAN



SECTION X-X

GENERAL NOTES:
 CONSTRUCT IN ACCORDANCE WITH SECTION 859 OF THE STANDARD SPECIFICATIONS.

THE DIMENSIONS FOR THE EXISTING BOX ARE APPROXIMATE AND MAY VARY SLIGHTLY.

DETAIL INTENDED FOR NON-TRAFFIC BEARING DRAINAGE STRUCTURES.

BILL OF MATERIALS				
REINFORCING STEEL				
CODE	SIZE	QTY.	LENGTH	REINF. STEEL LBS.
A	#4	20	4'-6"	60.12
TOTAL				60.12 *
MASONRY				CU. YDS.
TOP SLAB CONCRETE CLASS "B"				.4326 *
BRICK MASONRY PER FT HT (MIN)				.4111

***NOTE:**
 QUANTITIES BASED ON 3'-6" X 3'-6" DRAINAGE STRUCTURE. ADJUST QUANTITIES FOR LARGER STRUCTURES AND MANHOLE CONSTRUCTION.